

PLASTDETALJER



11

RAL FARGER

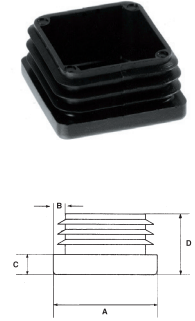
RAL 1000 Grünbeige	RAL 1001 Beige	RAL 1002 Sandgelb	RAL 1003 Signalgelb	RAL 1004 Goldgelb	RAL 1005 Honiggelb	RAL 1006 Maisgelb	RAL 1007 Narzissengelb	RAL 1011 Braunbeige	RAL 1012 Zitronengelb	RAL 1013 Perlweiß	RAL 1014 Elfenbein	RAL 1015 Hellelfenbein
RAL 1016 Schwefelgelb	RAL 1017 Safrangelb	RAL 1018 Zinkgelb	RAL 1019 Graubeige	RAL 1020 Olivgelb	RAL 1021 Rapsgelb	RAL 1023 Verkehrsgelb	RAL 1024 Ockergelb	RAL 1027 Currygelb	RAL 1028 Melonengelb	RAL 1032 Ginstergelb	RAL 1033 Dahliengelb	
RAL 2000 Gelborange	RAL 2001 Rotorange	RAL 2002 Blutorange	RAL 2003 Pastelloran	RAL 2004 Reinorange	RAL 2008 Hellrotoran	RAL 2009 Verkehrsoran	RAL 2010 Signaloran	RAL 2011 Tieforange	RAL 2012 Lachsoran			
RAL 3000 Feuerrot	RAL 3001 Signalrot	RAL 3002 Kaminrot	RAL 3003 Rubinrot	RAL 3004 Purpurrot	RAL 3005 Weinrot	RAL 3007 Schwarzrot	RAL 3009 Oxidrot	RAL 3011 Braunrot	RAL 3012 Beigerot	RAL 3013 Tomatenrot	RAL 3014 Altrosa	RAL 3015 Hellrosa
RAL 3016 Korallenrot	RAL 3017 Rose	RAL 3018 Erdbeerrot	RAL 3020 Verkehrsrot	RAL 3022 Lachsrot	RAL 3027 Himbeerrot	RAL 3031 Orientrot						
RAL 4001 Rotlila	RAL 4002 Rotviolett	RAL 4003 Erikaviolett	RAL 4004 Bordeauxviolett	RAL 4005 Blaulila	RAL 4006 Verkehrspurp	RAL 4007 Purpurviolett	RAL 4008 Signalviolett	RAL 4009 Pastellviolett				
RAL 5000 Violettblau	RAL 5001 Grünblau	RAL 5002 Ultramarinblau	RAL 5003 Saphirblau	RAL 5004 Schwarzblau	RAL 5005 Signalblau	RAL 5007 Brillantblau	RAL 5008 Graublau	RAL 5009 Azurblau	RAL 5010 Enzianblau	RAL 5011 Stahlblau	RAL 5012 Lichtblau	RAL 5013 Kobaltblau
RAL 5014 Taubenblau	RAL 5015 Himmelblau	RAL 5017 Verkehrsblau	RAL 5018 Türkisblau	RAL 5019 Capriblau	RAL 5020 Ozeanblau	RAL 5021 Wasserblau	RAL 5022 Nachtblau	RAL 5023 Fernblau	RAL 5024 Pastellblau			
RAL 6000 Patinagrün	RAL 6001 Smaragdgrün	RAL 6002 Laubgrün	RAL 6003 Olivgrün	RAL 6004 Blaugrün	RAL 6005 Moosgrün	RAL 6006 Grauoliv	RAL 6007 Flaschengrün	RAL 6008 Braungrün	RAL 6009 Tannengrün	RAL 6010 Grasgrün	RAL 6011 Resedagrün	RAL 6012 Schwarzgrün
RAL 6013 Schilfgrün	RAL 6014 Gelbolive	RAL 6015 Schwarzolive	RAL 6016 Türkisgrün	RAL 6017 Maigrün	RAL 6018 Gelbgrün	RAL 6019 Weißgrün	RAL 6020 Chromoxidgrün	RAL 6021 Blassgrün	RAL 6022 Braunoliv	RAL 6024 Verkehrsgrün	RAL 6025 Farngrün	RAL 6026 Opalgrün
RAL 6027 Lichtgrün	RAL 6028 Kieferngrün	RAL 6029 Minzgrün	RAL 6032 Signalgrün	RAL 6033 Minttürkis	RAL 6034 Pastelltürkis							
RAL 7000 Fehgrau	RAL 7001 Silbergrau	RAL 7002 Olivgrau	RAL 7003 Moosgrau	RAL 7004 Signalgrau	RAL 7005 Mausgrau	RAL 7006 Beigegrau	RAL 7008 Khakigräu	RAL 7009 Grüngräu	RAL 7010 Zeitgräu	RAL 7011 Eisengräu	RAL 7012 Basaltgräu	RAL 7013 Braungräu
RAL 7015 Schiefergräu	RAL 7016 Anthrazitgräu	RAL 7021 Schwarzgräu	RAL 7022 Umbragräu	RAL 7023 Betongräu	RAL 7024 Graphitgräu	RAL 7026 Granitgräu	RAL 7030 Steingräu	RAL 7031 Blaugräu	RAL 7032 Kieselgräu	RAL 7033 Zementgräu	RAL 7034 Gelbgräu	RAL 7035 Lichtgräu
RAL 7036 Platingräu	RAL 7037 Staubgräu	RAL 7038 Achatgräu	RAL 7039 Quarzgräu	RAL 7040 Fenstergräu	RAL 7042 Verkehrsgräu	RAL 7043 Verkehrsgräu B	RAL 7044 Seidengräu					
RAL 8000 Grünbraun	RAL 8001 Ockerbraun	RAL 8002 Signalbraun	RAL 8003 Lehmbraun	RAL 8004 Kupferbraun	RAL 8007 Rehbraun	RAL 8008 Olivbraun	RAL 8011 Nussbraun	RAL 8012 Rotbraun	RAL 8014 Sepiabraun	RAL 8015 Kastanienbr	RAL 8016 Mahagonib	RAL 8017 Schokobraun
RAL 8019 Graubraun	RAL 8022 Schwarzbraun	RAL 8023 Orangebraun	RAL 8024 Beigebraun	RAL 8025 Blassbraun	RAL 8028 Terrabraun							
RAL 9001 Cremeweiß	RAL 9002 Grauweiß	RAL 9003 Signalweiß	RAL 9004 Signalschwarz	RAL 9005 Tiefschwarz	RAL 9010 Reinweiß	RAL 9011 Graphitschw	RAL 9016 Verkehrsw	RAL 9017 Verkehrssch	RAL 9018 Papyruswei			

Fargekoder er kun ment som en veiledning og kan avvike fra det endelige resultatet.

E - PLASTINNSATSER FOR KVADRATISKE RØR

- Materiale PE
- Standard farve sort (enkelte størrelser grå og hvit standard)
- Ved bestilling oppgi rørets utvendige mål + godstykkelse i mm
- Enkelte størrelser kan leveres m/blankt buet hode (serie EB)
- Alle mål er oppgitt i mm

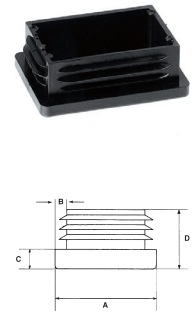
A	B	C	D	A	B	C	D	A	B	C	D
E10x10	1,0-2,0	4	10	E34x34	1,0-2,0	5	15	E 60x60x5	5,0	5	15
E12x12	1,0-2,0	4	12	E35x35	1,0-2,0	5	15	E 65x65	2,0-4,0	5	21
E15x15	1,0-2,0	5	12	E35x35x2,5-5	2,5-5,0	5	12	E 70x70	2,0-4,0	5	19
E16x16	1,0-2,0	5	12	E38x38	1-3,5,0	5	15	E 70x70x3	3,0	5	17
E18x18x05	0,5-1,0	5	12	E40x40	1,0-2,0	5	14	E 70x70x3,6-5	3,6-5,0	5	17
E18x18	1,0-2,0	5	11	E40x40x3	3,0	5	15	E 75x75	2,0-4,5	6	21
E18x18x3	3,0-3,5	5	12	E40x40x2,6-4	2,6-4,0	7	18	E 80x80	1,5-2,5	6	17
E20x20	1,0-2,0	5	12	E40x40x5	5,0	5	15	E 80x80	2,0-4,0	6	21
E20x20x3	3,0	5	12	E45x45	1,0-2,0	5	18	E 80x80x3-4	3,0-4,0	5	17
E20x20x4	4,0	5	12	E45x45x3,5-4	3,5-4,0	5	14	E 80x80	4,0-6,0	6	21,4
E22x22	1,0-2,0	5	14	E45x45x4-4,5	4,0-4,5	5	14	E 90x90	2,0-5,0	5	25
E22x22x3	3,5	7	18	E48x48	1,0-2,5	5	14,8	E 90x90x5	5,0	5	18
E25x25	1,0-2,0	5	14	E48x48	2,5-4,5	5	14,8	E100x100	3,0-6,0	5	23
E25x25x3	3,0	5	14	E50x50	1,0-2,0	5	19	E100x100x5	5,0	5	18
E27x27	1,2	5	15	E50x50x2,3-4	2,6-4,0	5	19	E110x110	3,0-5,0	6	25
E28x28	1,0-2,5	5	12	E50x50x5	2,6-5,0	5	19	E120x120	2,5-5,0	5	25
E30x30	1,0-2,0	5	15	E55x55	5,0	5	15	E125x125	3,0-6,0	6	24,5
E30x30x3	1,0-2,0	5	15	E 60x60	1,0-2,0	5	19	E150x150	10,0-12,5	7	27
E32x32	1,0-3,5	5	12	E 60x60x3	3,0	5	15				



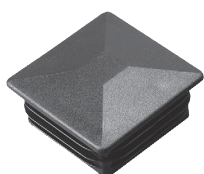
F - PLASTINNSATSER FOR REKTANGULÆRE RØR

- Materiale LDPE (Polyetylen)
- Standard farve sort (enkelte størrelser grå og hvit standard)
- Ved bestilling oppgi rørets utvendige mål + godstykkelse i mm
- Enkelte størrelser kan leveres m/blankt buet hode (serie FB)
- Alle mål er oppgitt i mm

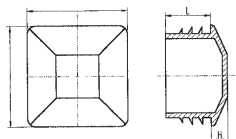
A	B	C	D	A	B	C	D	A	B	C	D
F20x10	0,75-2	5	12	F50x40	1-3,5	5	12	F 90x70	3-5,5	6	21
F20x15	1-2	5	11	F50x40x3	3-4	5	13	F100x20	1-2,5	5	15
F25x10	1-2	5	12	F55x34	1,5-4	5	15	F100x25	1,5-3	5	15
F25x12	1-2	5	10	F55x35	1-2	5	13	F100x30	1,5-3,5	5	15
F25x15	1-2	5	12	F55x40	1,5-4	5	15	F100x40x2	1,5-2	5	18
F25x20	1-2	5	14	F60x15	1-1,5	6	14	F100x40x3-4	3-4	5	18
F30x10	1-2	5	13	F60x20	1-2	5	14	F100x50x2-3	2-3	5	24
F30x15	1-2	5	12	F60x25	1-2	5	14	F100x50x3-6	3,2-6	6	24
F30x20	1-2	5	14	F60x30	1-2	5	14	F100x50x5	5	6	24
F30x20x3	3	5	13	F60x30x3	1-2	5	14	F100x60	2,5-4,5	6	25
F30x25	1-2	5	14	F60x30	2,5-4,0	5	14,5	F100x80	3,5-5	6	24
F35x10	1-2	5	10	F60x33	1,5-3,5	5	14	F110x30	2,0-4,0	5	14,5
F35x15	1-2	5	12	F60x35	1,5-3,5	5	14	F110x60	3,5-5,5	6	24
F35x20	1-2	5	13	F60x40	1-2	5	14	F110x70	3-5	6	24
F35x25	1-2	5	13	F60x40x4	4-5	5	14	F120x20	1,5-3,0	5	14,5
F35x30	1-2	5	14	F60x45	1,5-4	5	15	F120X25	1,5-3,0	5	14,5
F40x10	1-2	5	11	F60x50	1,5-3,5	5	15	F120x30	1-2	5	20
F40x15	1-2	5	12	F65x35	1,5-3,5	5	20	F120x40x3	3	5	17
F40x20	1-2	5	14	F70x20	1-2	5	15	F120x50	3,5-5,5	6	27
F40x20x3	3	5	13	F70x25	1-2	5	17	F120x60	2-3	5	24
F40x25	1-2	5	12	F70x30	1-2	6	18	F120x60x3	3	5	19
F40x30	1-2	5	14	F70x35	1,5-3,5	5	14	F120x60x4	4	5	18
F40x30x3	3	5	13	F70x40	1,5-2,5	6	18	F120x60x5	5	5	23
F40x35	1-3	5	11	F70x40x4	4	6	18	F120x80	2-3	5	24
F45x15	1-2	5	11	F70x50	1-5	5	14	F120x80	2,0-5,5	6	24,5
F45x20	1-2	5	13	F75x25	1-3	5	19	F120x80x5-8	5-8	7	24
F45x25	1-2	5	12	F75x50	2-4	5	20	F120x100	3,5-6	6	24
F45x30	1-2	5	12	F80x20	1,5-2	5	18	F125X75	2,0-5,0	6	24,5
F45x35	1-2	5	11	F80x25	1,5-3	5	18	F140x80	2-4	5	25
F45x35x3	1-3,5	5	12	F80x30	1-2	5	18	F140x80x4	4	5	19
F45x40	2-3	5	13	F80x30x2,5	2,5	5	18	F150X30	1,5-3,0	6	21,5
F48x38	1-2	5	14	F80x40	1-3	5	18	F150x50	2-4	6	27
F50x10	1-1,5	5	12	F80x40	3,0-5,0	5	14,5	F150X50	4,0-7,0	6	21,5
F50x15	1-2	5	14	F80x40x4	4	5	18	F150X60	2,5-5,0	6	21,5
F50x20	1-2	5	14	F80x50	2-4	5	18	F150x100	2-4	6	27
F50x20x3	1-2	5	14	F80x50x4	4	5	24	F150X75	2,5-5,5	6	21,5
F50x25	1-2	5	12	F80x60	1,5-3,0	4,9	24,2	F160X50	2,5-5,5	6	21,5
F50x30	1-2	5	14	F80x60	2,5-3	5	24	F160X60	2,5-5	6	21,5
F50x30x3	3	5	14	F80x60	4,0-6,0	5	24	F160X80	3,0-5,5	6	24,5
F50x34	1-3,5	5	14	F 90x50	2-4,5	6	21	F200x70	3-6	6	27
F50x35	1-3,5	5	14								



ES - DEKORINNSATS FOR KVADRATISKE RØR

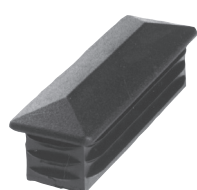


- Materiale LDPE (Polyetylen)
- Standard farve sort (enkelte størrelser grå og hvit standard)
- Ved bestilling oppgi rørets utvendige mål + godstykkelse i mm
- Alle mål er oppgitt i mm

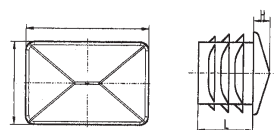


	A	B	H	L
ES20x20	1,0-2,0	5	12	
ES22x22	1,0-2,0	5	14	
ES25x25	1,0-2,0	5	13	
ES30x30	1,0-2,0	5	13	
ES35x35	1,0-2,0	5	14	
ES40x40	1,5-2,5	5	14	
ES50x50	1,0-2,0	5	20	
ES80x80	1,5-2,5	6	17	

FS - DEKORINNSATSER FOR REKTANGULÆRE RØR



- Materiale LDPE (Polyetylen)
- Standard farve sort
- Ved bestilling oppgi rørets utvendige mål + godstykkelse i mm
- Alle mål er oppgitt i mm

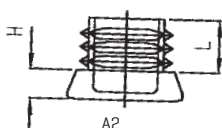


	A	B	H	L
FS25x15	1,0-2,0	5	12	
FS30x10	1,0-2,0	5	12	
FS30x15	1,5-2,0	5	12	
FS30x20	1,5-2,0	5	14	
FS40x15	1,0-2,0	5	12	
FS40x20	1,0-2,0	5	14	
FS40x30	1,5-2,0	5	13	
FS50x20	1,5-2,0	5	13	
FS50x30	1,5-2,0	5	13	
FS50x40	1,0-2,0	5	12	
FS60x20	1,5-2,0	5	14	
FS60x30	1,5-2,0	5	14	
FS60x40	1,5-2,5	5	14	

H/I - PLASTINNSATS FOR FIRKANT RØR M/STOR FOT

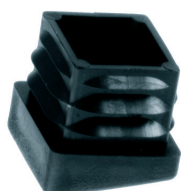


- Materiale PE (polyetylen)
- Standard farve sort

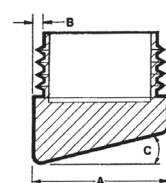


	A	A2	B	H	L
H15x15	20x20	1-2	4	14	
H20x20	26x26	1,5	7	16	
H25x25	29x29	1-2	6	12	
I 20x10	25x15	1-2	7	12	
I 20x15	24x18	1-2	5	13	
I 25x15	29x19	1-2	7	11	

G - PLASTINNSATS FOR FIRKANT RØR M/SKRÅ FLATE



- Materiale LDPE (Polyetylen)
- Standard farve sort
- Ved bestilling oppgi rørets utvendige mål + godstykkelse i mm
- Alle mål er oppgitt i mm

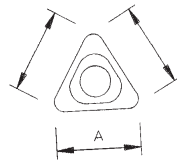


	A	B	C	D
G 15x15	1-2	10	11	
G 16x16	1-2	10	12	
G 18x18	1-2	10	12	
G 20x20	1-2	10	12	
G 25x25	1-2	10	14	
G 20x15	1-2	10	12	
G 25x15	1-2	10	12	
G 30x15	1-2	10	12	
G 30x20	1-2	10	14	

FD - PLASTINNSATS FOR TREKANT RØR

A	B	C	D
FD30x30x30	1,5	5	10
FD35x35x35	2,0	5	10

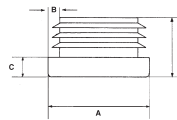
- Materiale PE (polyetylen)
- Standard farve sort



GL - PLASTINNSATSER FOR RUNDE RØR

A	B	C	D	A	B	C	D
GL 10	1,0-2,0	4	10	GL 50x2,5	2,5-3,5	5	18
GL 12	1,0-2,0	4	10	GL 50x4-5	4,0-5,0	5	18
GL 13	1,0-2,0	4	10	GL 51x1,5	1,5-2,5	5	12
GL 14	1,0-2,0	4	10	GL 51x2,3	2,0-3,5	5	16
GL 15	1,0-2,0	4	10	GL 51x3-4	3,0-4,0	5	18
GL 16	1,0-2,0	4	10	GL 51x4-5	4,5-5,5	5	18
GL 18	0,8-2,0	4	12	GL 55	1,0-2,5	5	14
GL 19	0,8-2,0	4	11	GL 55x3-5	3,0-5,0	5	20
GL 20	0,8-2,5	4	12	GL 60	1,5-2,5	5	22
GL 21	0,8-2,0	5	12	GLZ 60,3 [2"]	3,65	6	25
GLZ 21,3 [1/2"]	2,65	5	20	GL 60x3-4	3,0-4,0	5	22
GL 22	1,0-2,5	4	12	GL 65	1,5-3,5	5	24
GL 23	1,0-2,0	5	12	GL 70	1,0-3,5	5	21
GL 24	1,0-2,0	5	12	GL 70	1,5-2,5	5	21
GL 25	1,0-2,5	5	12	GL 70x2-4,5	2,0-4,5	5	21
GL 25x3	3,0	5	12	GL 75	1,0-3,5	5	22
GL 26	1,0-3,0	5	12	GL 76	1,5-2,5	5	22
GLZ 26,9 [3/4"]	2,65	5	20	GL 76x3-4	3,0-4,0	5	22
GL 27	1,0-3,0	5	14	GL 80	1,5-2,5	7	18
GL 28	0,8-2,5	5	14	GL 80	3,0-3,5	6	21
GL 30	0,8-2,5	5	14	GL 85	1,5-4,0	6	21
GL 30x3	3,0	5	14	GL 90	2,5-5,0	5	20
GL 32	0,8-2,5	5	14	GL 95	1,5-4,0	6	21
GL 32x3	3,0	5	14	GL 100	2,0-4,5	6	28
GLZ 33,7 [1"]	3,25	5	20	GL 102	2,0-4,0	5	20
GL 34	1,0-2,0	5	14	GL 105	2,0-4,5	6	28
GL 35	1-2,5,0	5	14	GL 108	2,0-4,5	6	28
GL 36	1,5-2,0	5	14	GL 110	2,0-4,5	6	28
GL 38	1,0-2,0	5	12	GL 114	3,2-5,5	6	28
GL 40	1,0-2,5	5	12	GL 120	2,0-4,0	6	21
GL 40x3	3,0	5	12	GL 125	2,0-6,0	6	40
GL 42	1,0-2,5	5	12	GL 130	2,0-6,0	6	40
GLZ 42,4 [1 1/4"]	3,25	6	25	GL 140	2,0-6,5	6	40
GL 43	2,0-2,5	5	12	GL 150	2,0-7,0	6	40
GL 45	1,0-2,5	5	15	GLZ 88,9 [3"]	1,8-4,0	6	21
GL 46	1,5-3,5	5	12	GL 133	2,0-6,0	6	34
GL 48	1,5-2,5	5	18	GL 159	2,0-6,5	6	34
GL 48x3-4	3,0-4,0	5	18	GL 160	2,5-7,0	6	34
GLZ 48,3 [1 1/2"]	3,25	6	25	GL 168,3	2,0-6,5	6	34
GL 50x0,8	0,8-1,5	5	12	GL 193,7	2,9-6,0	6	34
GL 50	1,5-2,5	5	16				

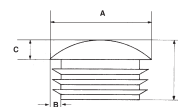
- Materiale LDPE (Polyetylen)
- Standard farve sort (andre farver produseres)
- Ved bestilling oppgi rørets utvendige mål + godstykkelse i mm



SL - PLASTINNSATS FOR RUNDE RØR M/BUET HODE

A	B	C	D	A	B	C	D
SL 10	1,0-2,0	4	6	SL 28	1,0-2,0	5	14
SL 12	1,0-2,0	4	10	SL 30	1,0-2,0	5	14
SL 13	0,8-2,0	4	10	SL 32	1,0-3,0	5	15
SL 14	1,0-2,0	4	10	SL 33K		10	14
SL 15	1,0-2,0	4	9	SL 34	1,0-3,0	6	15
SL 16	0,8-2,0	4	9	SL 35	1,0-2,0	6	14
SL 18	1,0-2,0	4	12	SL 36	1,0-2,0	6	14
SL 18K	1,0-2,0	6	12	SL 38	1,0-2,0	6	12
SL 19	1,0-2,0	4	11	SL 40	1,0-2,0	6	12
SL 20	1,0-2,0	5	12	SL 42	1,0-2,0	6	12
SL 20K	1,0-2,0	7	12	SL 45	1,0-2,0	5	15
SL 22	1,0-2,0	4	12	SL 48	1,5-2,5	6	18
SL 25	1,0-2,0	5	12	SL 50	1,5-2,5	6	16
SL 25x3	3,0	5	12	SL 55	1,0-2,0	6	14
SL 25K	1,0-2,0	8	12	SL 60	1,5-3,0	6	22
SL 27	1,0-2,0	5	14	SL 80	1,5-3,0	6	22

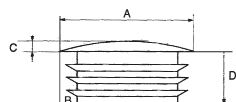
- Materiale LDPE (Polyetylen)
- Standard farve sort (enkelte størrelser grå og hvit standard)
- Ved bestilling oppgi rørets utvendige mål + godstykkelse i mm
- Enkelte størrelser kan leveres m/blankt buet hode (serie FB)
- Alle mål er oppgitt i mm



SFL - PLASTINNSATS M/LAVT HODE



- Materiale LDPE (Polyetylen)
- Standard farve sort
- Ved bestilling oppgi rørets utvendige mål + godstykkelse i mm
- Alle mål er oppgitt i mm

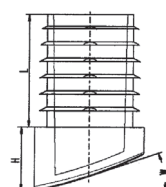


	A	B	C	D		A	B	C	D
SFL 10	1,0-2,0	1,5	11		SFL 24	1,5-2,0	3,0	12	
SFL 12	1,0-2,0	1,5	11		SFL 25	1,0-2,5	3,0	12	
SFL 13	0,8-2,0	2,0	12		SFL 25x3	2,5-3,0	3,0	12	
SFL 14	1,0-2,0	2,0	12		SFL 26	1,0-3,0	3,0	12	
SFL 15	0,8-2,0	2,0	12		SFL 27	1,0-3,0	3,0	12	
SFL 15-K	1,0-1,5	2,0	5		SFL 28	0,8-2,5	3,0	12	
SFL 16	0,8-2,0	2,0	12		SFL 30	0,8-2,5	4,0	11	
SFL 16-K	1,5-2,0	2,0	5		SFL 32	1,0-2,0	3,0	12	
SFL 18	0,25-1,5	2,0	12		SFL 34	1,0-3,0	2,5	12	
SFL 18-K	1,5-2,0	2,0	7		SFL 35	1,0-3,0	2,5	12	
SFL 19	0,8-2,0	2,0	12		SFL 38	1,0-3,0	2,5	12	
SFL 19-K	0,8-2,0	2,0	7		SFL 40	1,0-3,0	2,5	12	
SFL 20	0,8-2,5	2,5	13		SFL 42	1,0-3,0	2,5	12	
SFL 20-K	1,5-2,0	2,5	5		SFL 45	1,0-3,0	2,5	12	
SFL 21	0,8-2,0	2,5	13		SFL 50	1,0-2,5	2,5	12	
SFL 22	1,0-2,5	2,5	13		SFL 55	1,5-2,0	4,5	16	
SFL 23	0,8-2,5	2,5	13						

GRL - PLASTINNSATS FOR RUNDE RØR M/SKRÅ FLATE



- Materiale PE
- Standard farve sort

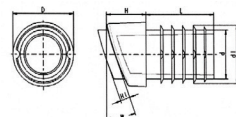


	A	B	W	H	L
GRL 16 (30)	1,5	.(30)	12	14	
GRL 18 (12-18)	1,5-2	[12-18]	12	21	
GRL 18 (18-22)	1,5-2	[18-22]	14	21	
GRL 19 (15)	1,5-2	.(15)	10	20	
GRL 20 (12-18)	1,5-2	[12-18]	12	23	
GRL 20 (18-22)	1,5-2	[18-22]	15	23	
GRL 22 (12-18)	1,5-2	[12-18]	13	25	
GRL 22 (18-22)	1,5-2	[18-22]	16	25	
GRL 25 (12-18)	1,5-2	[12-18]	14	28	
GRL 25 (18-22)	1,5-2	[18-22]	16	28	
GRL 32 (20)	1,5-2	.(20)	17	20	

GRF - PLASTINNSATS FOR RUNDE RØR M/SKRÅ FLATE M/FILT



- Materiale PE
- Standard farve sort
- Med filt

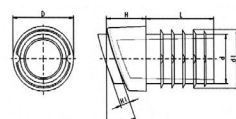


	A	B	W	H	L
GRF 16 (30)	1,5	.(30)	12	14	
GRF 18 (12-18)	1,5-2	[12-18]	12	21	
GRF 18 (18-22)	1,5-2	[18-22]	14	21	
GRF 19 (15)	1,5-2	.(15)	10	20	
GRF 20 (12-18)	1,5-2	[12-18]	12	23	
GRF 20 (18-22)	1,5-2	[18-22]	15	23	
GRF 22 (12-18)	1,5-2	[12-18]	13	25	
GRF 22 (18-22)	1,5-2	[18-22]	16	25	
GRF 25 (12-18)	1,5-2	[12-18]	14	28	
GRF 25 (18-22)	1,5-2	[18-22]	16	28	
GRF 32 (20)	1,5-2	.(20)	17	20	

GRP - PLASTINNSATS FOR RUNDE RØR M/SKRÅ FLATE M/NYLON GLIDEFLATE



- Materiale PE
- Standardfarve sort
- M/glideflate av **PA**
- Kan leveres m/**POM** (lydløs)

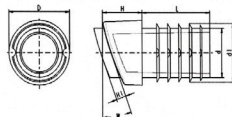


	A	B	W	H	L
GRP 16 (30)	1,5	.(30)	12	14	
GRP 18 (12-18)	1,5-2	[12-18]	12	21	
GRP 18 (18-22)	1,5-2	[18-22]	14	21	
GRP 19 (15)	1,5-2	.(15)	10	20	
GRP 20 (12-18)	1,5-2	[12-18]	12	23	
GRP 20 (18-22)	1,5-2	[18-22]	15	23	
GRP 22 (12-18)	1,5-2	[12-18]	13	25	
GRP 22 (18-22)	1,5-2	[18-22]	16	25	
GRP 25 (12-18)	1,5-2	[12-18]	14	28	
GRP 25 (18-22)	1,5-2	[18-22]	16	28	
GRP 32 (20)	1,5-2	.(20)	17	20	

GRP PUR - PLASTINNSATS FOR RUNDE RØR M/SKRÅ FLATE

A	B	W	H	L
GRP 16 [30]	1,5	[30]	12	14
GRP 18 [12-18]	1,5-2	[12-18]	12	21
GRP 18 [18-22]	1,5-2	[18-22]	14	21
GRP 19 [15]	1,5-2	[15]	10	20
GRP 20 [12-18]	1,5-2	[12-18]	12	23
GRP 20 [18-22]	1,5-2	[18-22]	15	23
GRP 22 [12-18]	1,5-2	[12-18]	13	25
GRP 22 [18-22]	1,5-2	[18-22]	16	25
GRP 25 [12-18]	1,5-2	[12-18]	14	28
GRP 25 [18-22]	1,5-2	[18-22]	16	28
GRP 32 [20]	1,5-2	[20]	17	20

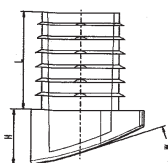
- Materiale PE
- Standardfarve sort
- M/glidefate av **PUR** antiskli



GS - STABLEGLIDER SKRÅ/RUNDE RØR

A	B	W	H	L
GS 18 [12-18]	1,5-2	[12-18]	12	21
GS 18 [18-22]	1,5-2	[18-22]	12	21
GS 20 [12-18]	1,5-2	[12-18]	14	23
GS 20 [18-22]	1,5-2	[18-22]	14	23
GS 22 [12-18]	1,5-2	[12-18]	16	25
GS 22 [18-22]	1,5-2	[18-22]	16	25
GS 25 [12-18]	1,5-2	[12-18]	19	28
GS 25 [18-22]	1,5-2	[18-22]	19	28

- Materiale PE
- Standard farve sort
- Leveres også m/filt [fastsveiset] GFS



GFS - STABLEGLIDER SKRÅ/RUNDE RØR

A	B	W	H	L
GFS 18 [12-18]	1,5-2	[12-18]	12	21
GFS 18 [18-22]	1,5-2	[18-22]	12	21
GFS 20 [12-18]	1,5-2	[12-18]	14	23
GFS 20 [18-22]	1,5-2	[18-22]	14	23
GFS 22 [12-18]	1,5-2	[12-18]	16	25
GFS 22 [18-22]	1,5-2	[18-22]	16	25
GFS 25 [12-18]	1,5-2	[12-18]	19	28
GFS 25 [18-22]	1,5-2	[18-22]	19	28

- Materiale PE
- Standard farve sort
- Leveres også m/filt [fastsveiset] GFS



GRS - STABLEGLIDER SKRÅ/RUNDE RØR

A	B	W	H	S
GRS 20-1,5		[0-30]	20	2-3
GRS 20-2,0		[0-30]	20	2-3
GRS 22-1,5		[0-30]	20	2-3
GRS 22-2,0		[0-30]	20	2-3
GRS 25-1,5		[0-30]	20	2-3
GRS 25-2,0		[0-30]	20	2-3

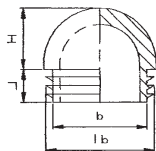
- Materiale PE
- Standard farve sort
- Leveres også m/filt [fastsveiset] GFS



GLR - PLASTINNSATS FOR RUNDE RØR HALVKULEFORM



- Materiale LDPE (Polyetylen)
- Standard farve sort
- Ved bestilling oppgi rørets utvendige mål + godstykkelse i mm
- Alle mål er oppgitt i mm

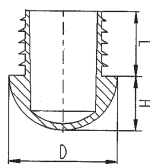


	A	B	L	H
GLR 16	1-2	7	12	
GLR 18	1-2	9	11	
GLR 20	1-2	10	15	
GLR 22	1-2	11	15	
GLR 25	1-2	11	15	
GLR 28	1-2	14	14	
GLR 30	1-2	14	17	
GLR 32	1-2	16	20	
GLR 35	1-2	17	19	
GLR 40	1-2	21	12	
GLR 50	1-2	30	25	
GLR 50		25,5	29,5	
GLR 60	1-2	30	40	

DZ - PLASTINNSATS FOR "TOMME" RØR



- Spesielt for gjerdestolper og rekkverk
- Kuleformet
- Materiale PE, standard farve sort
- Passer for rør dim. i tommer

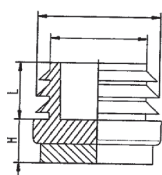


Rørdimensjoner ["]	Rørdimensjoner [mm]	D	L	H
DZ 1/2"	21,3x2,75	21,3	11	20
DZ 3/4"	26,9x2,65	26,9	14	20
DZ 1"	33,7x3,25	33,7	17	20
DZ 1 1/4"	42,4x3,00	42,4	22	25
DZ 1 1/2"	48,3x3,25	48,3	24	25
DZ 2"	60,3x2,75	60,3	30	25

GFL - PLASTINNSATS FOR RUNDE RØR M/FILT



- Materiale PP+filt, fastsveiset [ultral lyd]
- Standard farve sort plast grå filt

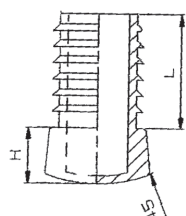


	A	B	H	L
GFL 15	1,5-2,0	6	6	16
GFL 16	1,5-2,0	6	6	16
GFL 18	1,5-2,0	6	6	16
GFL 19	1,5-2,0	6	6	16
GFL 20	1,5-2,0	6	6	16
GFL 22	1,5-2,0	6	6	16
GFL 25	1,5-2,0	6	6	16
GFL 28	1,5-2,0	5	14	
GFL 30	1,5-2,0	6	6	16
GFL 32	1,5-2,0	6	6	16

GLK - PLASTINNSATS FOR RUNDE RØR M/KONISK HODE



- Materiale LDPE (Polyetylen)
- Standard farve sort
- Ved bestilling oppgi rørets utvendige mål + godstykkelse i mm
- Alle mål er oppgitt i mm

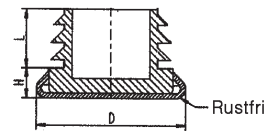


	A	B	H	L
GLK 18	1,0-2,0	12	25	
GLK 20	1,0-2,0	13	25	
GLK 22	1,5-2,5	14	30	
GLK 25	1,5-2,5	15	30	
GLK 28	1,5-2,5	16	30	
GLK 30	1,5-2,5	17	35	

GLM - PLASTINNSATS FOR RUNDE RØR M/RUSTFRI GLIDEFLATE

A	D	B	H	L
GLM 15	18	1,5-2	5	10
GLM 16	18	1,5-2	5	10
GLM 18	20	1,5-2	5	12
GLM 19	22	1,5-2	6	11
GLM 20	22	1,5-2	6	12
GLM 22	25	1,5-2	5	12
GLM 25	30	1,5-2	6	12
GLM 27	30	1,5-2	6	14
GLM 28	30	1,5-2	6	14
GLM 30	35	1,5-2	6	14
GLM 32	35	1,5-2	6	14
GLM 38	42	1,5-2	6	12
GLM 40	42	1,5-2	6	12

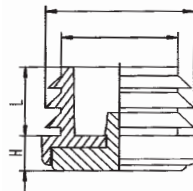
- Materiale PE/rustfritt stål
- Standard farve sort



GLP - PLASTINNSATS FOR RUNDE RØR M/PA GLIDEFLATE

A	B	H	L
GLP 16	1,5-2	8	9,7
GLP 18	1,5-2	8	12
GLP 19	1,5-2	8	11
GLP 20	1,5-2	8	12
GLP 22	1,5-2	8	12
GLP 25	1,5-2	8	12

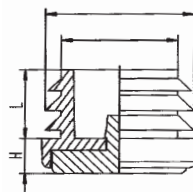
- Materiale PE+PA
- Standard farve sort PE + natur PA



GRP - PLASTINNSATS FOR RUNDE RØR M/POM GLIDEFLATE

A	B	H	L
GRP 18	1,5-2	8	12
GRP 19	1,5-2	8	11
GRP 20	1,5-2	8	12
GRP 22	1,5-2	8	12
GRP 25	1,5-2	8	12

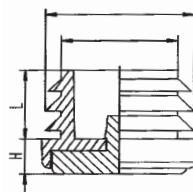
- Materiale PE+POM Lydløs
- Standard farve sort PE + natur POM



GRP PUR - PLASTINNSATS FOR RUNDE RØR PUR GLIDEFLATE

A	B	H	L
GRP 18	1,5-2	8	12
GRP 19	1,5-2	8	11
GRP 20	1,5-2	8	12
GRP 22	1,5-2	8	12
GRP 25	1,5-2	8	12

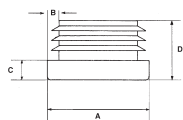
- Materiale PE+PUR Antiskli
- Standard farve sort PE + natur PUR



FO - PLASTINNSATSER FOR FLATOVALE RØR



- Materiale PE polyetylen
- Standard farve er sort

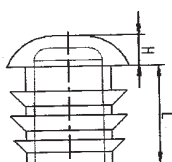


A	B	C	D	A	B	C	D
FO 20x10	1,0-2,0	3	11	FO 48x20	1,0-3,0	5	12
FO 25x12	1,5-2,0	3	11	FO 50x20	1,0-3,0	5	12
FO 30x15	1,0-2,0	3	11	FO 50x25	1,0-3,0	5	12
FO 30x15x2,5	1,5-2,5	3	10	FO 50x30	1,0-3,0	5	12
FO 30x20	1,0-2,0	3	10	FO 55x35	1,5-2,0	5	15
FO 35x15	1,2-2,5	5	12	FO 60x20	1,0-2,0	5	14
FO 35x20	1,0-2,0	5	12	FO 60x30	1,0-2,0	5	14
FO 38x20	1,0-2,0	5	11	FO 80x25	1,2-2,5	5	14,5
FO 40x20	1,0-2,0	5	12				
FO 40x20x2,5	1,5-2,5	3	12				

FOS - PLASTINNSATS FOR OVALE RØR M/BUET HODE



- Materiale PE polyetylen
- Standard farve er sort



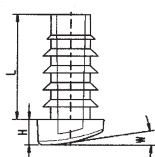
A	B	H	L
FOS 30x15	1,5-2,0	4	12
FOS 35x15	1,5-2,0	4	12
FOS 38x20	1,5-2,0	4	12
FOS 40x20	1,5-2,0	5	12
FOS 50x20	1,5-2,0	4	12
FOS 60x30	1,0-2,0	4	12

FOW - PLASTINNSATS FOR OVALE RØR M/SKRÅ FLATE



FOW-FILT

- Materiale PE polyetylen
- Standard farve er sort



A	B	H	L	W
FOW 30x15	1-2	6	25	15
FOW 38x20	1-2	8	25	15
FOW 40x20	1-2	8	25	15
FOW 48x20	1-2	8	25	15

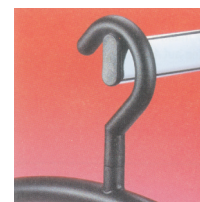
FOG - INNSATS FOR FLATOVALE RØR M/STOPPER



- Materiale PE polyetylen
- Standard farve er sort



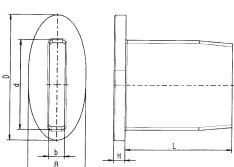
A	B	C	D	E
FOG 35x15	30x15	1,5-2	3	12



FOG - INNSATS FOR ELIPSERØR RØR M/STOPPER



- Materiale PE polyetylen
- Standard farve er sort

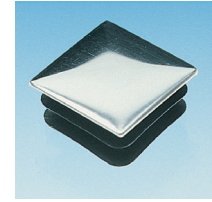
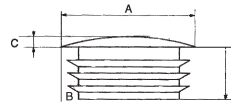


DxB	dx b	H	L
FOG 42x21	31x5,5	4	36

E - KROM PLASTINNSATSER M/METALLKAPPE

	A	B	C	D
E 16x16 KROM	1,0-1,5	2,0	10	
E 18x18 KROM	1,0-1,5	2,0	10	
E 20x20 KROM	1,0-1,5	2,0	10	
E 22x22 KROM	1,0-1,5	2,0	10	
E 25x25 KROM	1,0-1,5	2,5	10	
E 30x30 KROM	1,0-1,5	3,0	11	
E 35x35 KROM	1,0-1,5	4,0	12	
E 40x40 KROM	1,0-1,5	4,0	12	

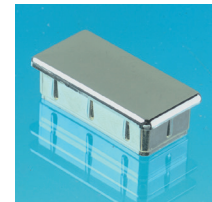
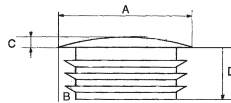
· Materiale PE m/påmontert metallkappe i krom



F - KROM PLASTINNSATSER M/METALLKAPPE

	A	B	C	D
F 20x10 KROM	1,0-1,5	2,0	10	
F 20x15 KROM	1,0-1,5	2,5	10	
F 30x15 KROM	1,0-1,5	3,0	10	
F 40x20 KROM	1,0-1,5	3,0	10	

· Materiale PE m/påmontert metallkappe i krom

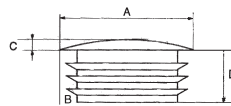


Spesialmodell i ABS

FO - KROM PLASTINNSATSER M/METALLKAPPE

	A	B	C	D
FO 20x10 KROM	1,0-1,5	2,0	10	
FO 30x15 KROM	1,0-1,5	2,5	10	
FO 36x18 KROM	1,0-1,5	2,0	12	
FO 40x20 KROM	1,0-1,5	2,0	11	

· Materiale PE m/påmontert metallkappe i krom

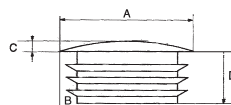


Spesialmodell i ABS

SFL - KROM PLASTINNSATSER M/METALLKAPPE

	A	B	C	D
SFL 13 KROM	1,0-1,5	3	7	
SFL 14 KROM	1,0-1,5	3	9	
SFL 16 KROM	1,0-1,5	3	9	
SFL 18 KROM	1,0-1,5	3	10	
SFL 19 KROM	1,0-1,5	3	9	
SFL 20 KROM	1,0-1,5	3	10	
SFL 22 KROM	1,0-1,5	3	10	
SFL 25x1,0 KROM	1,0	4	13	
SFL 25x1,5 KROM	1,5	4	13	
SFL 25x2,0 KROM	2,0	4	13	
SFL 28 KROM	1,0-1,5	4	14	
SFL 30 KROM	1,0-1,5	4	14	
SFL 32 KROM	1,0-1,5	4	14	
SFL 35 KROM	1,0-1,5	4	15	
SFL 38 KROM	1,0-1,5	4	14	
SFL 40 KROM	1,0-1,5	4	15	
SFL 45 KROM	1,0-1,5	4	15	
SFL 50x1,0 KROM	1,0	3	13	
SFL 50x1,2 KROM	1,2	3	13	
SFL 50x1,5 KROM	1,5	3	13	
SFL 50x2,0 KROM	2,0	3	13	
SFL 60x1,0 KROM	1,0	3	13	
SFL 60x2,0 KROM	2,0	3	13	
SFL 80x1,2 KROM	1,2	3	13	
SFL 80x1,5 KROM	1,5	3	13	

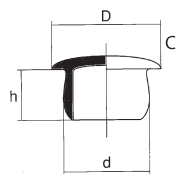
· Materiale PE m/påmontert metallkappe i krom



GLS - STÅLINNSATSER UTEN LAMELLER



- Materiale, ubehandlet stål

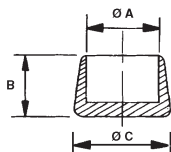


	D	B	C	h		D	B	C	h
GLS	18x1,0	1,0	2	7	GLS	28x1,5	1,5	3	7
GLS	18x1,2	1,2	2	7	GLS	30x0,85	0,85	3	8
GLS	18x1,5	1,5	2	7	GLS	32x1,0	1,0	3	8
GLS	20x1,0	1,0	3	10	GLS	32x1,2	1,2	3	8
GLS	20x1,2	1,2	2	10	GLS	32x1,5	1,5	3	8
GLS	22x1,2	1,2	3	9	GLS	32x2,0	2,0	3	8
GLS	22x1,5	1,5	3	9	GLS	35x1,0	1,0	3	9
GLS	25x1,2	1,2	3	9	GLS	35x1,2	1,2	3	9
GLS	25x1,5	1,5	3	9	GLS	35x1,5	1,5	3	9
GLS	25x1,5	1,5	3	9	GLS	40x1,0	1,0	3	9

A - A/PVC HOLKER



- For utvendig montering på runde rør
- Modell A - A/PE materiale PE
- Modell A/PVC materiale PVC
- Standard farve sort, kan også leveres i andre farger.
- Kan leveres med filt, AF

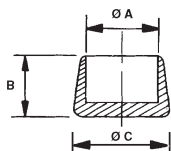


A	B	C	A	B	C
A 3		9 5,5	A 26	30	32,0
A 3,3		9 5,5	A 27		31 33,0
A 3,5		9 5,5	A 28		29 33,0
A 4		9 5,5	A 30		29 34,0
A 5		8 7,5	A 30 PVC [30-31]	31	34,0
A 6		12 7,5	A 32 PVC [32-33]	31	36,0
A 6,5		11 9,0	A 34 PVC	32	38,0
A 7		11 9,0	A 35 PVC [35-36]	31	39,0
A 8		13 12,0	A 38 PVC [38-39]	33	43,0
A 10		15 13,0	A 40 PVC [40-41]	32	45,0
A 11		16 16,0	A 42 PVC	33	46,0
A 12		16 16,0	A 43 PVC [43-44]	33	46,0
A 13		16 16,0	A 45 PVC [45-46]	34	49,0
A 14		16 16,0	A 47 PVC	32	51,0
A 15		17 19,0	A 48 PVC	33	53,0
A 16		21 20,0	A 49 PVC [49-51]	34	53,0
A 18		23 22,0	A 54 PVC [54-55]	34	58,0
A 19		23 22,0	A 59 PVC [59-60]	37	64,0
A 20		23 24,0	A 63 PVC [63-64]	38	68,0
AS 20		29 27,0	A 69 PVC [69-70]	38	74,0
A 21		27 27,0	A 75 PVC [75-76]	38	74,0
A 22		27 24,0	A 90 PVC	44	96,0
A 24		28 29,0	A 103 PVC	40	108,0
A 25		30 28,0	A 120	40	126,0

AS/PVC - HOLKER



- Materiale PVC [myk]
- Dråpeformet

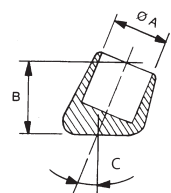


	A	B	C
AS/PVC 1,9	1,9 - 2,8	10	6,5
AS/PVC 2,8	2,8 - 3,5	11	7,5
AS/PVC 3,5	3,5 - 4,0	12	8,5
AS/PVC 4,0	4,0 - 4,8	13	10,0
AS/PVC 4,8	4,8 - 5,8	14	11,0
AS/PVC 5,8	5,8 - 8,0	14	11,0
AS/PVC 8,0	8,0 - 10,0	18	14,0

ASS - HOLKER FOR SKRÅ RØR



- Materiale PE
- Kan leveres med filt ASS/F

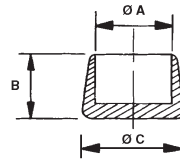


	A	B	C
ASS 16		20	15
ASS 16		23	25
ASS 18		21	20
ASS 19		21	20
ASS 19		23	25
ASS 22		25	20
ASS 25		28	15
ASS 25		30	25

AG - GUMMIHOLKER

	A	B	C
AG 13	23	21	
AG 16	24	25	
AG 18	25	28	
AG 19	27	28	
AG 22	28	30	
AG 25	29	33	
AG 32	40	44	

- Holker for utvendig montering
- Materiale grå gummi



AGK - GUMMIHOLKER

	A	B	C
AGK 16	50	40	
AGK 18	50	40	
AGK 22	55	43	
AGK 25	40	37	

- Holker for utvendig montering spesielt for krykker
- Materiale grå gummi kraftig modell m/innstøpt stålskive



AH - HOLKER M/STOR FOT

	A	B	C
AH 22	22	50	
AH 25	22	50	

- For utvendig montering på runde rør
- Modell A - A/PE materiale PE
- Modell A/PVC materiale PVC
- Standard farve sort, kan også leveres i andre farger.

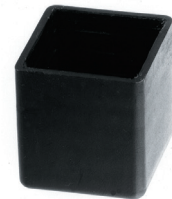
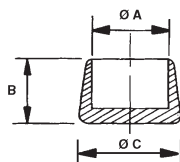


U - HOLKER FIRKANT RØR

	A	B	C
U 12x12	21	20x20	
U 15x15	24	22x22	
U 16x16	24	22x22	
U 20x20	26	24x24	
U 25x25	26	30x30	
U 30x30	32	33x33	
U 35x35	25	41x41	
U 40x40	32	44x44	
U 45x45	52	50x50	
U 50x50	32	53x53	
U 60x60	33	67x67	

	A	B	C
U 20x 5	20	26x 8	
U 20x10	20	25x15	
U 25x5	20	30x11	
U 25x8	20	31x11	
U 25x15	22	30x20	
U 30x 3	12	33x 5	
U 30x 5	20	35x10	
U 30x10	20	36x16	
U 30x15	24	35x20	
U 30x20	24	35x25	
U 40x20	23	46x26	
U 40x25	53	45x30	
U 40x30	53	45x35	
U 45x25	55	55x35	
U 50x30	27	57x37	
U 60x20	26	66x25	

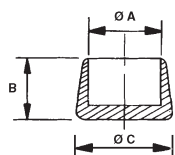
- Holker for utvendig montering på firkant rør
- Materiale PE



FOK - HOLKER FOR OVALE RØR



- Holker for utvendig montering på flatovale rør
- Materiale PE (farve sort og hvit)

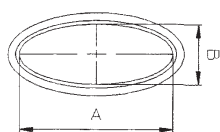


A	B	C
FOK 30x15	23	32x19
FOK 33x18	23	37x22,4
FOK 38x20	24	41x23,3
FOK 45x17	48	51x23,3

FOF - HOLKER FOR ELIPSEFORMEDE RØR



- Holker for utvendig montering på elipseformede rør
- Materiale PE (farve sort og hvit)

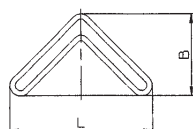


AxB	H	CXD
FOF 41x16	23	46x22

UD - HOLKER FOR VINKELJERN



- Materiale PE (farve sort)

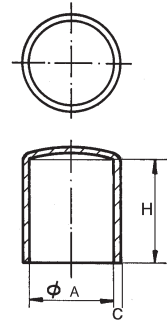


VINKEL	GODS	L	B	H
UD 25x25	1,5-2,0	42,6	26,6	11,5
UD 30x30	1,0-2,5	37,4	27,5	10
UD 36x36	1,5-2,5	58,5	34,6	11,3
UD 40x40	1,5-3,0	62,9	36,2	12

A/PVD - DYPSTØPTE HOLKER

A	H	C	A	H	C
	min - max			min - max	
A/PVD 1,6	10 - 15	0,5	A/PVD 47,0	40 - 300	2,0
A/PVD 1,8	10 - 20	0,7	A/PVD 48,0	40 - 120	2,0
A/PVD 2,0	10 - 20	0,7	A/PVD 49,0	40 - 120	2,0
A/PVD 2,2	10 - 20	0,9	A/PVD 50,0	40 - 110	2,0
A/PVD 2,5	10 - 25	0,9	A/PVD 51,0	40 - 120	2,0
A/PVD 2,8	10 - 25	0,9	A/PVD 52,0	40 - 120	2,0
A/PVD 3,0	10 - 30	0,9	A/PVD 53,0	40 - 110	2,0
A/PVD 3,5	10 - 30	1,1	A/PVD 54,0	40 - 300	2,0
A/PVD 3,8	10 - 30	1,2	A/PVD 55,0	40 - 120	2,0
A/PVD 4,0	10 - 45	1,2	A/PVD 55,5	40 - 80	2,0
A/PVD 4,5	10 - 45	1,2	A/PVD 57,0	40 - 120	2,0
A/PVD 4,7	10 - 45	1,2	A/PVD 58,0	40 - 70	2,0
A/PVD 5,0	10 - 110	1,2	A/PVD 59,0	40 - 120	2,0
A/PVD 5,5	10 - 70	1,2	A/PVD 60,0	40 - 80	2,0
A/PVD 6,0	16 - 110	1,2	A/PVD 62,0	40 - 100	2,0
A/PVD 6,5	16 - 70	1,2	A/PVD 63,0	40 - 70	2,0
A/PVD 7,0	16 - 110	1,2	A/PVD 64,0	40 - 80	2,0
A/PVD 7,5	16 - 70	1,2	A/PVD 65,0	40 - 90	2,0
A/PVD 8,0	16 - 110	1,3	A/PVD 66,0	40 - 90	2,0
A/PVD 9,0	20 - 110	1,3	A/PVD 68,0	40 - 120	2,0
A/PVD 9,5	20 - 70	1,4	A/PVD 70,0	40 - 80	2,0
A/PVD 10,0	20 - 110	1,4	A/PVD 72,0	40 - 120	2,0
A/PVD 11,0	20 - 110	1,4	A/PVD 74,0	40 - 80	2,0
A/PVD 12,0	20 - 120	1,4	A/PVD 75,0	40 - 80	2,0
A/PVD 13,0	20 - 120	1,4	A/PVD 76,0	40 - 80	2,0
A/PVD 14,0	20 - 120	1,4	A/PVD 78,0	40 - 80	2,0
A/PVD 15,0	20 - 120	1,4	A/PVD 80,0	40 - 90	2,0
A/PVD 16,0	25 - 300	1,4	A/PVD 84,0	40 - 90	2,0
A/PVD 17,0	25 - 120	1,6	A/PVD 85,0	40 - 90	2,0
A/PVD 18,0	25 - 200	1,6	A/PVD 88,0	40 - 90	2,0
A/PVD 19,0	25 - 120	1,6	A/PVD 90,0	40 - 90	2,1
A/PVD 20,0	25 - 200	1,7	A/PVD 93,0	40 - 90	2,1
A/PVD 21,0	25 - 120	1,7	A/PVD 100,0	40 - 150	2,1
A/PVD 22,0	25 - 120	1,7	A/PVC 103,0	40 - 90	2,1
A/PVD 23,0	25 - 200	1,8	A/PVD 104,0	40 - 90	2,1
A/PVD 24,0	25 - 200	1,8	A/PVD 106,0	40 - 90	2,1
A/PVD 25,0	30 - 120	1,8	A/PVD 108,0	40 - 90	2,1
A/PVD 26,0	30 - 200	1,9	A/PVD 110,0	40 - 150	2,1
A/PVD 27,0	30 - 200	1,9	A/PVD 114,0	40 - 90	2,1
A/PVD 28,0	30 - 120	1,9	A/PVD 120,0	40 - 150	2,1
A/PVD 29,0	30 - 120	1,9	A/PVD 123,0	40 - 150	2,1
A/PVD 30,0	35 - 220	1,9	A/PVD 125,0	40 - 150	2,1
A/PVD 31,0	35 - 120	1,9	A/PVD 130,0	40 - 80	2,1
A/PVD 32,0	35 - 200	1,9	A/PVD 133,0	40 - 80	2,1
A/PVD 33,0	35 - 220	1,9	A/PVD 134,0	40 - 80	2,1
A/PVD 34,0	35 - 220	1,9	A/PVD 140,0	40 - 70	2,1
A/PVD 35,0	35 - 120	1,9	A/PVD 142,0	40 - 70	2,1
A/PVD 36,0	35 - 220	1,9	A/PVD 150,0	40 - 70	2,1
A/PVD 37,0	35 - 70	1,9	A/PVD 160,0	40 - 70	2,1
A/PVD 38,0	35 - 120	1,9	A/PVD 168,0	40 - 70	2,1
A/PVD 40,0	40 - 350	2,0	A/PVD 170,0	40 - 70	2,1
A/PVD 41,0	40 - 300	2,0	A/PVD 180,0	40 - 60	2,1
A/PVD 42,0	40 - 250	2,0	A/PVD 194,0	40 - 60	2,1
A/PVD 43,0	40 - 120	2,0	A/PVD 200,0	40 - 60	2,1
A/PVD 44,0	40 - 120	2,0	A/PVD 223,0	40 - 50	2,1
A/PVD 45,0	40 - 120	2,0	A/PVD 244,0	40 - 50	2,1
A/PVD 46,0	40 - 120	2,0	A/PVD 248,0	40 - 50	2,1

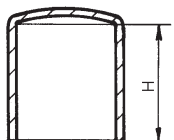
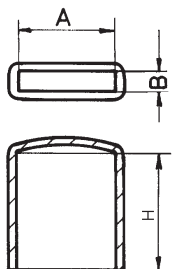
- Materiale myk PVC - ca. Shore A 65
- Denne serie lagerføres ikke, produseres etter forespørsel
- Meget fleksibel produksjonsmetode
- Kan støpes m/kundens profil som verktøy



U/PVD - DYPSTØPTE HOLKER



- Materiale myk PVC - ca. Shore A 65
- Denne serie lagerføres ikke, produseres etter forespørsel
- Meget fleksibel produksjonsmetode
- Kan støpes m/kundens profil som verktøy

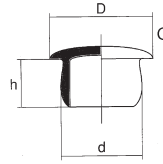


AxB	H		AxB	H	
	min	max		min	max
U/PVD	8 x 2	20 30	U/PVD	30 x 15	25 50
U/PVD	8 x 4	20 45	U/PVD	30 x 20	30 50
U/PVD	10 x 1,5	15 20	U/PVD	30 x 30	40 50
U/PVD	10 x 3	20 40	U/PVD	34 x 2	20 40
U/PVD	10 x 8	25 60	U/PVD	35 x 4	25 50
U/PVD	10 x 10	25 50	U/PVD	35 x 5	25 110
U/PVD	12 x 3	20 50	U/PVD	35 x 6	25 110
U/PVD	12 x 4	20 50	U/PVD	35 x 8	25 120
U/PVD	12 x 6	25 60	U/PVD	35 x 10	30 40
U/PVD	12 x 12	30 40	U/PVD	35 x 25	30 50
U/PVD	13 x 5	15 70	U/PVD	35 x 35	40 60
U/PVD	14 x 2	20 45	U/PVD	37 x 20	30 40
U/PVD	14 x 8	25 70	U/PVD	38 x 2	20 40
U/PVD	15 x 1,5	16 30	U/PVD	38 x 3	25 40
U/PVD	15 x 3	20 50	U/PVD	39 x 2	20 45
U/PVD	15 x 6	25 70	U/PVD	40 x 3	25 40
U/PVD	15 x 8	25 60	U/PVD	40 x 4	25 125
U/PVD	15 x 15	25 60	U/PVD	40 x 8	25 120
U/PVD	16 x 4	25 60	U/PVD	40 x 10	30 40
U/PVD	18 x 2	20 40	U/PVD	40 x 20	36 50
U/PVD	18 x 3	20 50	U/PVD	40 x 30	40 60
U/PVD	18 x 4	20 40	U/PVD	40 x 40	40 60
U/PVD	18 x 18	25 50	U/PVD	45 x 8	25 120
U/PVD	19 x 2	20 120	U/PVD	45 x 24	36 60
U/PVD	19 x 2,5	20 40	U/PVD	45 x 30	45 50
U/PVD	19 x 8	25 30	U/PVD	45 x 30	45 50
U/PVD	20 x 2	20 120	U/PVD	45 x 45	40 60
U/PVD	20 x 3	25 80	U/PVD	48 x 2	20 45
U/PVD	20 x 4	25 80	U/PVD	50 x 4	25 40
U/PVD	20 x 5	20 110	U/PVD	50 x 5	25 40
U/PVD	20 x 6	25 110	U/PVD	50 x 10	30 60
U/PVD	20 x 8	25 120	U/PVD	50 x 12	30 120
U/PVD	20 x 10	25 60	U/PVD	50 x 25	30 50
U/PVD	20 x 20	30 50	U/PVD	50 x 30	45 120
U/PVD	22 x 5	25 50	U/PVD	50 x 40	40 50
U/PVD	23 x 4	25 50	U/PVD	50 x 50	45 65
U/PVD	24 x 2	20 30	U/PVD	55 x 12	30 120
U/PVD	25 x 3	25 50	U/PVD	55 x 35	40 50
U/PVD	25 x 4	25 110	U/PVD	57 x 2	20 60
U/PVD	25 x 5	25 50	U/PVD	60 x 5	25 50
U/PVD	25 x 8	25 120	U/PVD	60 x 10	30 60
U/PVD	25 x 10	25 40	U/PVD	60 x 15	30 70
U/PVD	25 x 15	25 60	U/PVD	60 x 30	40 50
U/PVD	25 x 25	30 50	U/PVD	60 x 40	40 50
U/PVD	28 x 4	25 50	U/PVD	60 x 60	40 60
U/PVD	28,5 x 2	20 30	U/PVD	65 x 65	40 50
U/PVD	29 x 5	25 50	U/PVD	68 x 68	40 50
U/PVD	30 x 2	20 40	U/PVD	70 x 40	40 50
U/PVD	30 x 3	25 45	U/PVD	76 x 2	20 60
U/PVD	30 x 4	25 40	U/PVD	80 x 60	40 50
U/PVD	30 x 5	25 110	U/PVD	80 x 80	40 50
U/PVD	30 x 6	25 110	U/PVD	100 x 50	40 50
U/PVD	30 x 8	25 120	U/PVD	100 x 60	45 50
U/PVD	30 x 10	30 40	U/PVD	100 x 100	45 65
U/PVD	30 x 12	25 120			

B - PLATEPROPPER

D	d	h	D	d	h	D	d	h
B 10,0 / 2,5 / 5,0			B 10 / 6,0 / 5,4			B 13 / 10,0 / 6,7		
B 12,0 / 2,5 / 5,0			B 12 / 6,0 / 7,0			B 15 / 10,0 / 6,7		
B 15,0 / 2,5 / 5,0			B 13 / 6,0 / 5,4			B 16 / 10,0 / 6,7		
B 5,8 / 2,8 / 5,0			B 15 / 6,0 / 5,4			B 13 / 10,5 / 4,0		
B 11,0 / 2,8 / 4,8			B 13 / 6,5 / 6,0			B 13 / 11,0 / 5,0		
B 12,0 / 3,0 / 6,0			B 15 / 6,5 / 6,0			B 15 / 11,0 / 5,0		
B 15,0 / 3,0 / 6,0			B 13 / 6,6 / 7,0			B 16 / 11,0 / 5,0		
B 18,0 / 3,0 / 7,0			B 15 / 6,6 / 7,0			B 15 / 12,0 / 8,4		
B 6,4 / 4,0 / 5,3			B 10 / 7,0 / 6,5			B 18 / 12,0 / 7,0		
B 8,0 / 4,0 / 3,0			B 13 / 7,0 / 6,5			B 15 / 12,0 / 11,6		
B 10,0 / 4,0 / 5,3			B 15 / 7,0 / 6,5			B 16 / 13,0 / 8,5		
B 13,0 / 4,0 / 5,3			B 16 / 7,0 / 6,5			B 17 / 13,0 / 8,5		
B 8,0 / 4,1 / 7,0			B 20 / 7,0 / 7,5			B 17 / 15,0 / 3,0		
B 6,6 / 5,0 / 5,5			B 10 / 7,2 / 2,0			B 18 / 14,0 / 7,0		
B 8,0 / 5,0 / 5,0			B 10 / 7,2 / 6,5			B 17 / 15,0 / 9,0		
B 8,0 / 5,0 / 5,5			B 13 / 7,9 / 6,0			B 18 / 15,0 / 1,4		
B 10,0 / 5,0 / 5,5			B 10 / 8,0 / 6,3			B 19 / 15,0 / 3,0		
B 13 / 5,0 / 4,0			B 13 / 8,0 / 6,3			B 20 / 15,0 / 3,0		
B 13,0 / 5,0 / 5,5			B 15 / 8,0 / 6,3			B 19 / 15,0 / 9,0		
B 15,0 / 5,0 / 5,5			B 16 / 8,0 / 6,3			B 20 / 15,0 / 4,0		
B 20,0 / 5,0 / 7,5			B 17 / 8,0 / 6,3			B 19 / 15,5 / 4,5		
B 13,0 / 5,2 / 7,0			B 13 / 8,5 / 6,9			B 24 / 17,0 / 6,0		
B 8 / 5,4 / 7,4			B 15 / 8,5 / 6,9			B 28 / 18,3 / 6,0		
B 10 / 5,4 / 7,4			B 16 / 8,5 / 6,9			B 23 / 20,0 / 3,0		
B 13 / 5,4 / 7,4			B 12 / 9,0 / 6,4			B 23 / 20,0 / 10,0		
B 15 / 5,4 / 7,4			B 13 / 9,0 / 6,4			B 28 / 20,4 / 4,8		
B 8 / 5,5 / 5,8			B 15 / 9,0 / 6,4			B 28 / 20,8 / 4,8		
B 10 / 5,5 / 5,6			B 16 / 9,0 / 6,4			B 30 / 25,0 / 5,0		
B 12 / 5,5 / 5,6			B 12 / 10,0 / 6,7					
B 8 / 6,0 / 5,4			B 13 / 10,0 / 3,0					

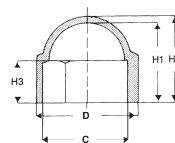
- For blanding av hull
- Materiale PE
- Standard farge sort [enkelte størrelser standard i hvit]



BK - MUTTERHETTER FOR SEKSKANTSKRUE / MUTTER

NV Gjenge	D	H1	H2	H3	NV Gjenge	D	H1	H2	H3
BK 7 M 4	9,0	7,5	8,3	3,5	BK 30 M 20	37,4	31,0	33,2	17,0
BK 8 M 5	10,9	8,5	9,5	5,0	BK 32 M 22	39,7	34,0	36,2	19,0
BK 10 M 6	12,9	12,0	13,0	6,0	BK 36 M 24	44,4	38,0	39,2	20,0
BK 13 M 8	16,8	14,0	15,0	9,0	BK 42 M 27	50,1	44,0	46,5	23,0
BK 16 M 10	20,0	17,0	19,0	9,0	BK 46 M 30	55,9	49,0	51,5	25,0
BK 17 M 10	21,3	18,5	19,5	9,0	BK 50 M 33	60,5	53,0	55,5	27,0
BK 18 M 12	22,0	18,0	20,0	11,0	BK 55 M 36	67,0	57,0	59,5	30,0
BK 19 M 12	23,6	20,0	21,5	11,0	BK 60 M 39	72,0	60,0	62,5	38,0
BK 22 M 14	27,5	22,5	24,0	12,0	BK 65 M 42	76,5	63,0	65,3	42,0
BK 24 M 16	29,8	25,5	27,0	14,0	BK 70 M 45	85,5	73,0	75,5	38,0
BK 27 M 18	34,0	29,0	43,0	15,0					

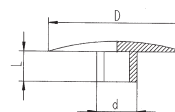
- Forhindrer korrosjon på muttere og bolter [DIN 439/555/934/936]
- Lett på- og avmontering
- Materiale PE
- Standard farge sort/grå [enkelte størrelser standard i hvit]



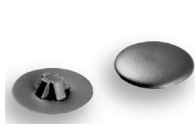
BI - DEKKAPPER FOR INNSEKSKANTSKRUE [UNBRACO]

d	D	L
BI 3 / 9 / 2,2		
BI 3 / 12 / 2,2		
BI 4 / 10 / 2,9		
BI 4 / 12 / 2,3		
BI 4 / 14 / 3,0		
BI 4 / 18 / 2,9		
BI 5 / 10 / 2,7		
BI 5 / 11 / 2,7		
BI 5 / 18 / 4,0		
BI 6 / 12 / 3,6		
BI 8 / 12 / 3,8		
BI 10 / 15 / 3,2		

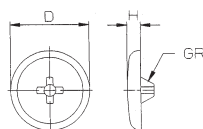
- Materiale PE standard farge sort / hvit



BS - DEKKAPPE FOR POZIDRIVE SKRUER

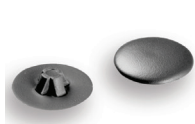


- Materiale PE Standard farve sort/hvit
- GR = Pozidrivestørrelse

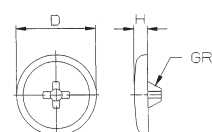


D	GR	H
BS 8,1	1	1,7
BS 9	2	1,7
BS 12	2	1,7
BS 13	3	2,4
BS 15	3	2,4
BS 14	4	2,2
BS 18,1	4	2,2
BS 18,2	5	2,2

BS - DEKKAPPE FOR PHILIPS SKRUER



- Materiale PE Standard farve sort/hvit
- GR = Philips størrelse

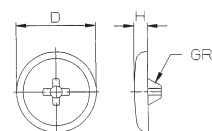


D	GR	H
BS12	2	2,2
BS15	3	2,0

BT - DEKKAPPE FOR TORX SKRUER



- Materiale PE
- Standard farve sort / hvit
- GR = Torx størrelse

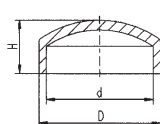


D	GR	H
BT12	10	2
BT12	15	2
BT12	20	2
BT13,5	25	2,1
BT15	25	2
BT18	25	2
BT16,5	30	2,2
BT18	40	2

BKP - DEKKAPPE FOR SKRUEHODER



- Materiale PE Polyetylen
- Standard farve sort/hvit

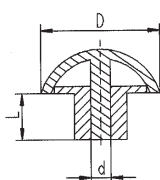


d	D	H	d	D	H
BKP 6,0	9,0	3,5	BKP11,0	14,5	3,8
BKP 6,0	10,0	4,0	BKP11,5	15,0	4,0
BKP 7,0	9,2	4,0	BKP11,6	17,0	4,0
BKP 7,0	10,5	5,0	BKP12,0	16,0	5,0
BKP 7,0	12,0	4,2	BKP12,0	17,0	3,6
BKP 8,2	12,0	2,5	BKP15,0	16,5	6,7
BKP 9,0	12,0	2,5	BKP15,0	18,0	5,3
BKP 9,0	12,0	5,0	BKP15,0	19,0	5,7
BKP 9,0	14,0	4,7	BKP22,0	25,0	10,0
BKP10,5	14,5	3,8			

BZK - DEKKAPPER FOR BLINDNAGLER



- Materiale PE Polyetylen
- Standard farve sort/hvit

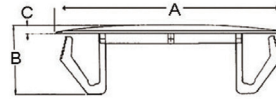


d	D	L	d	D	L
BZK 2,0	8,0	1,5	BZK 3,0	18,0	7,0
BZK 2,6	12,0	5,0	BZK 3,2	13,0	4,0
BZK 2,6	13,0	4,0	BZK 3,9	13,0	10,0
BZK 2,6	15,0	4,0	BZK 3,9	15,8	8,8
BZK 3,0	13,0	4,0	BZK 4,5	13,0	10,0
BZK 3,0	15,0	5,0	BZK 5,2	14,0	10,0
BZK 3,0	18,0	2,0			

UAK - PLATEPROPPER UNIVERSAL

	A	B	C
UAK 16	9,5-11,0	12,6	1,6
UAK 18	12,7-14,3	12,0	1,6
UAK 25	18,4-20,6	12,0	1,6
UAK 43	35,0-38,0	13,2	1,6
UAK 52	45,0-47,5	13,2	1,6

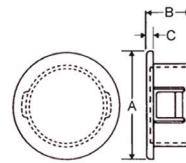
- For blanding av hull
- Materiale POM
- Standard farge svart



BST - PLATEPROPPER AVTAGBAR

A	B	C	A	B	C
BST 10,7-6,4	8,3	1,6	BST 26,2-20,6	10,3	1,6
BST 14,6-7,9	10,3	1,6	BST 27,4-22,2	10,3	1,6
BST 14,7-9,5	10,3	1,6	BST 30,9-25,4	10,3	1,6
BST 15,5-11,1	10,3	1,6	BST 32,9-27,8	10,3	1,6
BST 17,0-12,7	10,3	1,6	BST 35,7-30,1	10,3	1,6
BST 18,6-14,3	10,3	1,6	BST 36,9-31,8	10,3	1,6
BST 20,2-15,9	10,3	1,6	BST 40,1-34,9	11,5	1,6
BST 22,6-17,4	10,3	1,6	BST 43,6-38,1	11,5	1,6
BST 24,6-19,1	10,3	1,6			

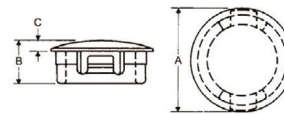
- For blanding av hull
- Materiale PA6,6
- Standard farge svart



MAS - PLATEPROPPER IKKE AVTAGBARE

A	B	C	A	B	C
MAS 7,1-5,5	6,4	1,6	MAS 14,7-12,7	6,4	1,6
MAS 8,7-7,1	6,4	1,6	MAS 15,1-13,5	6,4	1,6
MAS 9,5-7,9	6,4	1,6	MAS 17,5-15,1	6,4	1,6
MAS 10,3-8,7	6,4	1,6	MAS 18,3-15,9	6,4	1,6
MAS 11,9-9,5	6,4	1,6	MAS 21,4-19,0	6,4	1,6
MAS 11,9-10,3	6,4	1,6	MAS 22,6-19,8	6,4	1,6
MAS 13,5-11,1	6,4	1,6	MAS 24,6-22,2	6,4	1,6
MAS 13,5-11,9	6,4	1,6			

- For blanding av hull
- Materiale PA6,6
- Standard farge svart



AST - PLATEPROPPER IKKE AVTAGBARE

A	B	C	A	B	C
AST 6,4-4,7	5,9	1,1	AST 33,3-30,1	11,5	1,6
AST 7,9-6,4	7,9	1,6	AST 34,9-31,8	11,5	1,6
AST 9,5-7,9	7,9	1,6	AST 38,1-34,9	11,5	1,6
AST 11,9-9,5	10,3	1,6	AST 42,4-38,1	11,5	1,6
AST 13,5-11,1	10,3	1,6	AST 48,4-44,5	11,5	1,6
AST 14,7-12,7	10,3	1,6	AST 55,1-50,8	12,2	2,3
AST 16,7-14,3	10,3	1,6	AST 59,5-53,2	19,1	2,8
AST 18,2-15,9	10,3	1,6	AST 61,5-57,2	19,1	2,8
AST 19,8-17,4	10,3	1,6	AST 69,0-63,5	19,1	2,8
AST 23,4-19,1	10,3	1,6	AST 80,5-76,2	19,1	2,8
AST 22,6-20,6	10,3	1,6	AST 92,9-85,7	19,1	2,8
AST 25,8-22,2	11,5	1,6	AST 92,9-88,9	19,1	2,8
AST 30,6-25,4	11,5	1,6	AST 105,6-101,6	19,1	2,8
AST 30,9-28,0	11,5	1,6			

- For blanding av hull
- Materiale PA6,6
- Standard farge svart



EST - PLATEPROPPER FOR VENTILASJON



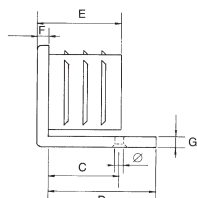
- For blending av hull
- Materiale PA6,6
- Standard farge svart

	A	B	C
EST 14,7-12,7	10,3	1,6	
EST 18,7-15,8	10,3	1,6	
EST 23,0-19,0	10,3	1,6	
EST 25,8-22,2	11,5	1,6	
EST 30,6-25,4	11,5	1,6	
EST 30,9-27,8-28,6	11,5	1,6	
EST 34,9-31,8	11,5	1,6	
EST 38,1-34,9	11,5	1,6	
EST 42,4-38,1	11,5	1,6	
EST 48,4-44,5	11,5	1,6	
EST 54,4-50,8	11,9	2,0	

MH - VINKELGLIDER FOR FIRKANT RØR

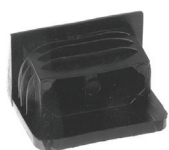


- For kvadratiske rør
- Rektangulære rør stående på kortsiden
- Materiale LDPE
- Standard farve sort
- Ved bestilling oppgi rørets utvendige mål og godstykkelse
- Kan leveres med filt

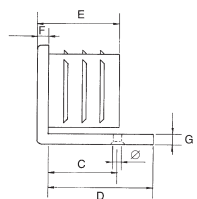


AxB	GODS	C	D	E	F	G	Ø
MH 20x20	1-2	25	29	20	5	5	5
MH 25x25	1-2	15	29	20	5	5	5
MH 30x30	1-2	25	39	20	5	5	5
MH 30x15	1-2	20	40	18	3	7	5
MH 30x20	1-2	26	37		5	5	5
MH 30x25	1-2	20	44	21	5	6	5
MH 35x20	1-2	26	40	20	5	5	5
MH 35x25	1-2		25	20	5	5	
MH 40x20	1-2	41	55	20	5	5	5
MH 40x25	1-2	31	45	20	5	8	5
MH 40x30	1-2		32	23	5	5	
MH 50x20	1-2		34	20	5	5	
MH 50x25	1-2	40	54	20	5	8	5
MH 50x30	1-2	26	40	20	5	7	5

MF - VINKELGLIDER FOR REKTANGULÆRE RØR



- For rektangulære rør liggende på langsiden
- Materiale LDPE
- Standard farve sort
- Ved bestilling oppgi rørets utvendige mål og godstykkelse

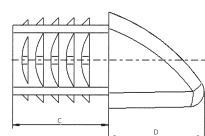


AxB	GODS	D	E	F	G
MF 30x15	1-2	32	22	4	3
MF 30x20	1-2	32	22	7	3
MF 40x20	1-2	33	24	7	3
MF 45x20	1-2	32	23	7	4
MF 50x20	1-2	33	24	6	4

FSS - PLASTINNSATS FOR LIGGENDE RØR



- Materiale PE
- Standard farve sort

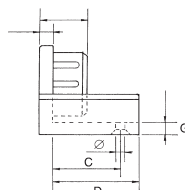


AxB	GODS	C	D
FSS 40x25	1-2	25	25
FSS 50x30	1-2	25	25

Z - VINKELGLIDER FOR RUNDE RØR

AxB	GODS	C	D	G	Ø
Z 20x2	2,0	-	39	4	-
Z 25x2	2,0	48	61	7	5
Z 28x2	2,0	48	60	6	5
Z 30x2	2,0	20	40	6	5
Z 32x1,5	1,5	29	46	6	5
Z 35x1,5	1,5	27	47	6	5
Z 35x2	2,0	28	56	5	5
Z 35x2,5	2,5	28	56	5	5
Z 38x2	2,0	29	46	8	5
Z 40x2,5	2,5	28	48	6	5

- Materiale LDPE (enkelte dim leveres i PA)
- Festes med plateskruer eller popnagler
- Kan leveres med filt ZF



ZV - VINKELGLIDER FOR RUNDE RØR JUSTERBAR

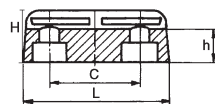
AxB	GODS	C	D	G	Ø
ZV 28x2	2,0	48,0	64	5,4	5,3
ZV 30x2	2,0	53,0	69	6,0	5,3
ZV 35x1,5	1,5	64,6	80	5,3	5,3
ZV 35x2	2,0	64,5	81	6,0	5,3
ZV 40x2,5	2,5	76,0	92	6,0	5,3



X - GLIDER FOR RUNDE LIGGENDE RØR

RØR Ø	L	B	C	H	h	ø	
X13	13-14	25	18	MIDT	13	6	4,0
X16	16-19	33	25	MIDT	13	6	5,0
X18	18-22	54	20	34	14	7	5,2
X22	22-25	50	23	MIDT	14	7	5,8
X25	25	45	25	16	10	8	6,2
X28	28-30	45	25	23	12	8	5,2
X32	32-35	40	31	MIDT	15	6	5,0
X40	40	50	23	MIDT	18	5,5	10,0
X45	45	47	46	23	18	8	6,0

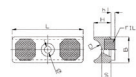
- Materiale LDPE (enkelte dim leveres i PA)
- Festes med plateskruer eller popnagler



XF - GLIDER FOR RUNDE LIGGENDE RØR M/FILT

RØR Ø	L	B	C	H	h	ø	
XF22	22-25	5,8	23	?	10,7	4	5,8

- Materiale LDPE
- Festes med plateskruer eller popnagler



XS - GLIDER FOR RUNDE LIGGENDE RØR M/PA GLIDEFLATE

RØR Ø	L	B	C	H	h	ø	
XS22	22-25	7,0	49,8	?	23,0	3,3	5,8

- Materiale LDPE/PA
- Festes med plateskruer eller popnagler

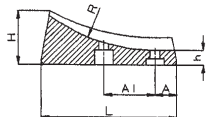


XG - GLIDER FOR RUNDE LIGGENDE BØYDE RØR



Festenagle [V]

- Materiale LDPE (enkelte dim leveres i PA)
- Festes med plateskruer eller popnagler



	ø	L	b	A1	h
XG22	22	71	23	42	7
XG25	25	72,5	25,5	51	8,3
XG30	30	76	28	14	8
XG32	32	75	33	28	8
XG38	38	75	32	28	8

XGF - GLIDER FOR RUNDE LIGGENDE RØR M/FILT



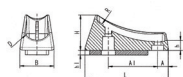
- Materiale LDPE (enkelte dim leveres i PA)
- Festes med plateskruer eller popnagler

	ø	L	b	A1	h
XGF22	22	71,0	27	42,5	6,5
XGF25	25	72,5	30	42,3	8,3

XGS - GLIDER FOR RUNDE LIGGENDE RØR M/GLIDEFLATE PA



- Materiale LDPE (enkelte dim leveres i PA)
- Festes med plateskruer eller popnagler
- Glideflate PA

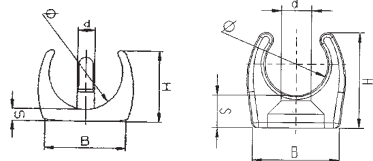


	ø	L	b	A1	h
XGS22	22	71,0	27	42,3	6,5
XGS25	25	72,5	30	42,3	8,3

W - KLEMGLIDER FOR RUNDE RØR M/TAPP



- Materiale PE
- Standard farve sort
- W10 er uten tapp



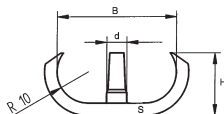
W12U

	ø	A	B	H	S	D
W10	10	29	29	15	5,0	-
W12	12	30	29	19	6,0	5,3
W12U	12	30	29	19	6,0	-
W14	14	26	15	15	3,5	5,5
W20	18-20	29	20	18	4,0	5,7
W22	20-22	29	22	20	4,0	5,7
W25	22-25	44	24	22	4,0	5,7
W30	28-30	43	29	25	4,0	5,7
W32	30-32	43	30	26	4,0	5,7
W35	33-35	43	30	27	4,0	5,7

WO - KLEMGLIDER FOR OVALE RØR M/TAPP



- Materiale PE
- Standard farve sort



	A	B	H	S	D
WO35x20	45	35	20	6,5	4,5
WO38x20	45	38	20	6,5	4,5

XG - KLEMGLIDER FOR BUEDE RØR



- Materiale PP
- Standard farve sort og natur

	R	H	B
XR20	43	8	22
XR22	42	7	25
XR25	42	6	25

XC - KLEMLIDER FOR OVALE RØR

	B	L
XC38x4	23	68

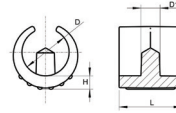
- Materiale PA
- Standard farge svart



WSP - KLEMLIDER FOR RUNDE RØR

	L	B	D	H
WSP 14-16	18	18,5	5,5	3,5
WSP 16-18	19	20,5	5,5	3,5
WSP 18-20	20	22,0	5,5	3,5
WSP 20-22	22	24,5	5,5	4,0
WSP 24-26	25	28,0	5,5	4,0
WSP 24-26	25	28,5	7,5	5,0
WSP 28-30	30	32,0	7,5	5,5

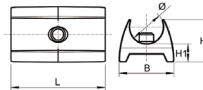
- Materiale PE
- Standard farge svart



WK - KLEMLIDER FOR RUNDE RØR M/TAPP

	L	B	H	H1	D
WK 10-11	28	16	12,5	5	4,3
WK 12-13	28	20	15,0	6	4,9
WK 14-15	28	23	18,0	7	4,9
WK 15-16	28	26	20,0	8	5,8

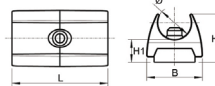
- Materiale PP
- Standard farge svart/natur



WKF - KLEMLIDER FOR RUNDE RØR M/TAPP M/FILT

	L	B	H	H1	D
WK 10-11	28	16	12,5	6	4,3
WK 10-11	28	20	15,0	7	4,9
WK 14-15	28	23	18,0	8	4,9
WK 15-16	28	26	20,0	9	5,8

- Materiale PP
- Standard farge svart/natur



X2B - GLIDER FOR RUNDE LIGGENDE BØYDE RØR

	L	B	H	A
X2B 20-25	77	27	5	27
X2B/F 20-25	77	27	5	27

- Materiale PP
- Standard farge svart/natur
- X2B/F m/filt



X2R - GLIDER FOR RUNDE LIGGENDE RØR

	L	B	H	A
X2R 20-25	50	21	5	27
X2R/F 20-25	50	21	5	27

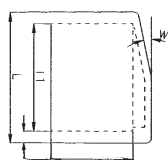
- Materiale PA
- Standard farge svart/natur
- X2R/F m/filt



O - HOLKER FOR LIGGENDE FIRKANTRØR



- Holker for liggende rør
- Materiale PE (polyetylen)

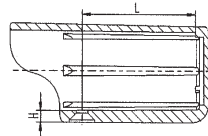


AxB	L	H	AxB	L	H
O 15x15	24,5	4,5	O 20x15	19,0	4,5
O 25x25	21,0	5,5	O 30x15	23,5	4,0
O 30x30	41,0	9,0	O 36x16	42,0	4,0
O 35x35	35,0	7,0	O 40x20	41,0	8,0
			O 40x25	42,0	8,0

ORS - HOLKER FOR LIGGENDE RUNDE RØR



- Holker for liggende rør
- Materiale PE



A	L	H
ORS 22	48	5
ORS 25	48	5
ORS 28	48	5
ORS 30	48	5
ORS 32	48	5
ORS 35	48	5
ORS 38	48	5



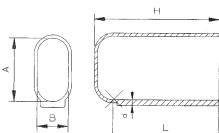
ORF m/innstøpt filt

ORP m/innstøpt glideplate

OO - HOLKER FOR LIGGENDE OVALE RØR



- Holker for liggende rør
- Materiale PE

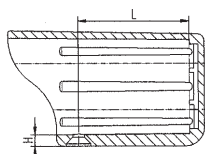


AxB	H	L	D
OO 30x15	60	52	2,7
OO 35x20	60	52	2,7
OO 38x20	60	52	2,7
OO 40x20	60	52	2,7
OO 50x20	70	60	2,7-5
OO 50x25	70	60	2,7
OO 50x30	70	60	2,7
OO 60x30	70	60	2,7

OOS - HOLKER FOR LIGGENDE OVALE RØR



- Holker for liggende ovale rør
- Materiale PP



A	L	H
OOS 38x20	48	8
OOS 40x20	48	8



OOF m/innstøpt filt

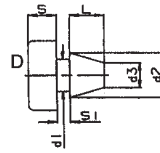


OOP m/innstøpt glideplate

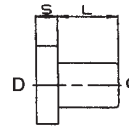
Y - STABLEGLIDER

	D	S	L	d1	S1	d2	d3
Y13	5,2	5	5,4	2	7,5	5,5	
Y13	4,5	5	7,0	2	9,3	5,3	

- Materiale PE
- Standard farge svart

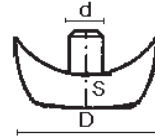


	D	S	d	L		D	S	d	L
Y10	3,0	5,2	19,0		Y14	3,0	7,8	8,5	
Y12	3,0	5,8	7,0		Y18	2,5	6,0	7,0	
Y13	1,5	5,0	4,0		Y18	3,5	5,5	9,0	
Y13	2,5	6,0	7,0		Y18	3,5	8,0	9,0	
Y13	7,0	4,0	5,0		Y18	3,5	10,0	9,0	
Y13	7,0	5,0	5,0						



YR - STABLEGLIDER M/RADIE

	D	Ø	S	d
YR14	[16-19]	5	5	
YR16	[16-19]	5	5	
YR16	[22-25]	5	5	
YR16	[28-32]	5	5	
YR20	[22-25]	5	5	



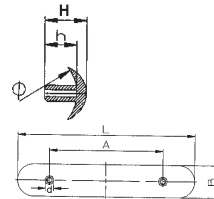
YS - STABLEGLIDER FOR RUNDE RØR



M/TPE

	LxB	Ø	A	d	h	H
YS 100x12	18-22	64	5,3	10,3	13,8	
YS 100x15	22-25	64	5,3	11,0	14,0	
YS 100x17	28-30	64	5,3	11,0	14,5	

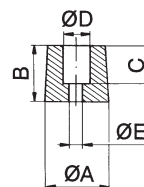
- Materiale PE
- Standard farge svart
- Kan leveres med YS2 med myk overflate



BUFFER

	A	B	ØD	ØE
Buffer 13/6/6/4	13	6	6	4
Buffer 18/8/7/3	18	8	7	3
Buffer 19/18/8/4	19	18	8	4
Buffer 19/10/9/4	19	10	9	4

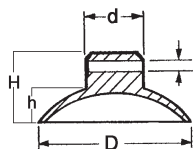
- Materiale myk PVC
- Farve sort
- Andre størrelser kan leveres



YG - GLASSUNDERLAG / YS SUGEKOPPER



- Materiale myk PVC
- **YG** Spesielt beregnet for bord og hyller m/ glassplater
- Farve transparent
- **YS** Sugekopper

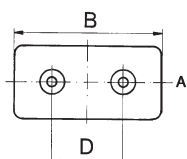


	D	h	H	d		D	H	d
YG 8/3/4	8	3	6	4	YS 20/14/ 6	20	14	6
YG 12/1/4	12	1	9	4	YS 25/17/ 7	25	17	7
YG 14/3/8	14	3	7	8	YS 30/18/ 8	30	18	8
					YS 42/18/10	42	18	6,5/10
					YS 42/12/18	42	18	12/18

P - PLATER M/HULL



- Kunststoff plater
- Materiale PE [polyetylen]
- Standard farve sort
- Med 2 forsenkede hull

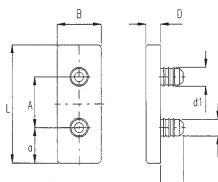


AxB	C	D	H
P33x14	6	19,0	1,7
P40x20	5	26,2	5,0
P40x20	8	27,5	5,0
P40x30	10	21,0	5,0
P45x28	5	26,2	5,0
P50x25	8	32,0	5,2
P55x40	10	30,0	5,0
P65x25	5	36,1	5,3
P65x30	7	50,0	

Q - PLATER M/TAPP



- Kunststoff plater
- Materiale PE [polyetylen]
- Standard farve sort
- Med tapper



LxB	D	A	d1
Q25x12	4,9	11,6	6,5
Q30x15	4,8	12,1	6,2
Q40x20	5,9	21,8	8,1
Q50x19	6,0	21,1	7,9
Q50x27	5,9	20,7	7,9

YSG - PLATE M/TAPP



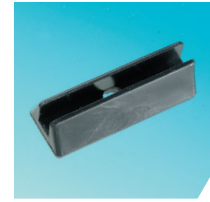
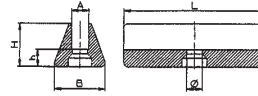
- Kunststoff plater
- Materiale PA
- Standard farge sort
- Med tapper

LxB	D	A	d1
YSG 50x6	4	11,6	6,5
YSG 50x6	4	32	5,8
YSG 50x6	4	32	5,8
YSG 50x10	4	32	5,8
YSG 50x10	4	32	5,8
YSG 80x6	4	64	5,8
YSG 80x6	4	64	5,8
YSG 80x8	4	64	5,8
YSG 80x8	4	64	5,8
YSG 80x10	4	64	5,8
YSG 80x10	4	64	5,8
YSG 80x14,2	4	64	5,8
YSG 80x14,2	4	64	5,8

N - GLIDER FOR FLATTJERN

LxBxA	H	h	ø
N63x23x8	20	8	7,5
N64x25x10	24	12	7,5

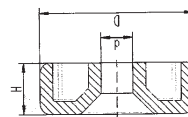
- Materiale PE
- Standard farve sort



PR - GLIDEPLATE

	Ø	H	D
PR25/07	25	7	3,5
PR30/10	30	10	6,2
PR40/10	40	10	6,2

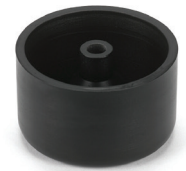
- Kunststoff plater
- Materiale PA (nylon)
- Med boring for senkskrue



PFH - MØBELFOT

Ø	H	D	Ø	H	D		
PFH50/20	50	20	8,2	PFH80/30	80	30	8,2
PFH50/30	50	30	8,2	PFH80/50	80	50	8,2
PFH50/35	50	35	8,2				
PFH50/40	50	40	8,2				
PFH50/45	50	45	8,2				
PFH50/50	50	50	8,2				

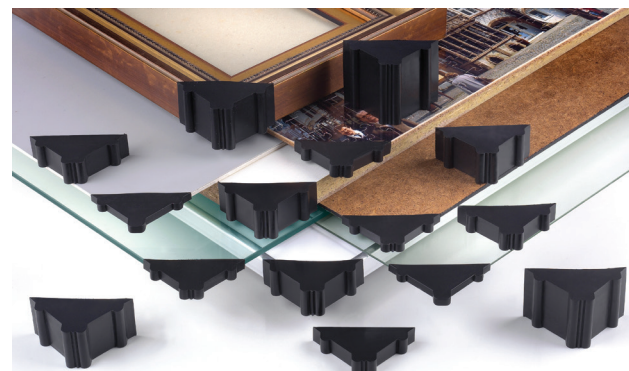
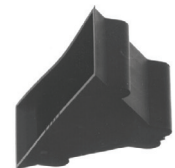
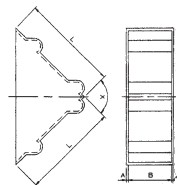
- Materiale PA (nylon)
- Med boring



SEK - HJØRNEBESKYTTELSE

B	A	L	X	B	A	L	X
SEK 2-3	1	50	90 ⁰	SEK 15-16	1	50	90 ⁰
SEK 3-4	1	30	90 ⁰	SEK 19-20	1	50	90 ⁰
SEK 3-4	1	50	90 ⁰	SEK 21-22	1	50	90 ⁰
SEK 4-5	1	50	90 ⁰	SEK 25-26	1	50	90 ⁰
SEK 5-6	1	50	90 ⁰	SEK 28,5-30	1	50	90 ⁰
SEK 7-8	1	50	90 ⁰	SEK 32-33	1	50	90 ⁰
SEK 9-10	1	50	90 ⁰	SEK 39-40	1	50	90 ⁰
SEK 11-12	1	50	90 ⁰	SEK 49-50	1	50	90 ⁰

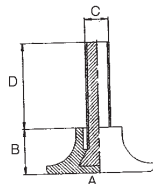
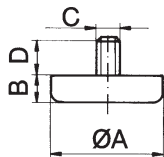
- Materiale PE
- Standardfarve sort



K - STILLSKRUER



- Sort plastfot (PE) faststøpt på skrue (elforzinket)
- Denne serien kan leveres m/innstøpt filt (KF)



KF-34



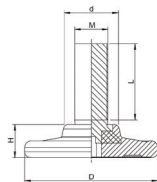
KF-24

Ø	GJENGE	D (Lengde)				A	B	C	
K20	M 6x	15	20			20	7	M 6	
K20	M 8x		20			20	7	M 8	
K20	M 10x		20			20	7	M 10	
K24	M 6x	15	20	30		24	8	M 6	
K24	M 8x		20	30	40	50	24	8	M 8
K24	M 10x		20	30	40	50	24	8	M 10
K34	M 8x		20	30	40	50	34	9	M 8
K34	M 10x		20	30	40	50	34	9	M 10
K45	M 10x			35			45	9	M 10

KS - STILLSKRUER



- Sort plastfot (PE) faststøpt på skrue (elforzinket)

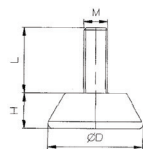


Ø	GJENGE	D (Lengde)			A	B	C
KS40	M 8x	20	30	40	40	10	M 8
KS40	M 10x	20	30	40	40	10	M 10

KK - STILLSKRUER



- Sort plastfot (PE) faststøpt på skrue (elforzinket)

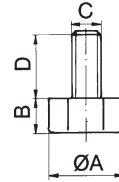


Ø	GJENGE	D (Lengde)				A	B	C	
KK30	M 6x	20	30			30	13	M 6	
KK30	M 8x	15	20	25	30	40	30	13	M 8
KK30	M 10x	20	30	40	50	60	30	13	M10
KK45	M 8x	15	20	30	40		30	13	M 8
KK45	M 10x	20	30	40	60		30	13	M10
KK70	M 10x	20			40	60	30	13	M10
KK70	M 12x			38		80	30	13	M12

LS - STILLSKRUER

Ø	GJENGE	D (Lengde)				A	B	C	
LS19	M 8x	16	26	36	46	19	8	M	8
LS27	M 8x	16	26	36	46	27	8	M	8
LS27	M 10x	14	24	34	44	27	8	M	10

- Sort plastfot (PA) faststøpt på skruer [elforzinket]
- Sekskantet fot
- På undersiden sekskanthull for montering
- Kan leveres m/innstøpt filt (LF)



L - STILLSKRUER

Ø	GJENGE	D (Lengde)				A	B	C	
L20	M 8x	16	26	36	46	20	8	M	8
L25	M 8x	16	26	36	46	25	8	M	8
L25	M 10x	14	24	34	44	25	8	M	10
L30	M 10x	14	24	34	44	30	8	M	10
L40	M 10x	14	24	34	44	40	8	M	10

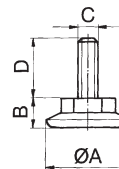
- Sort plastfot (PA) faststøpt på skruer [elforzinket]
- Sekskantet fot
- På undersiden sekskanthull for montering
- Kan leveres m/innstøpt filt (LF)



KL - STILLSKRUER

Ø	GJENGE	D (Lengde)				A	B	C	
KL35	M 8x	16	21	31	41	35	16,5	M	8
KL35	M 10x	16	21	31	41	35	16,5	M	10

- Stort plastfot (PE) faststøpt på skruer [elforzinket]
- Rund fot m/støpt sekskant nøkkelvidde 17mm
- På underside 8mm firkanthull for montering



KLR - STILLSKRUER

Ø	GJENGE	D (Lengde)				A	B	C	
KLR25	M 8x	16	26	36	46	25	9	M	8
KLR25	M 10x	16	26	36	46	25	9	M	10
KLR30	M 8x	16	26	36	46	30	9	M	8
KLR30	M 10x	16	26	36	46	30	9	M	8

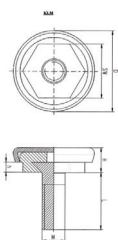
- Stort plastfot (PE) faststøpt på skruer [elforzinket]
- Rund fot m/støpt sekskant nøkkelvidde 17mm
- På underside 8mm firkanthull for montering



KLM - STILLSKRUER



- Stort plastfot [PA] faststøpt på skrue [elforzinket]
- M/rustfri glideflate

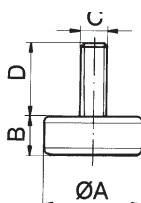


Ø	GJENGE	D [Lengde]		A	B	C
KLM34	M 8x	16	26	34	11	M 8
KLM34	M10x	16	26	34	11	M10

KG - STILLSKRUER



- Sort gummfot [NBR] faststøpt på skrue [elforzinket]

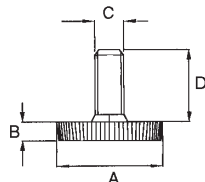


Ø	GJENGE	D [Lengde]		A	B	C
KG40	M 8x	25		40	16	M 8
KG40	M10x	25		40	16	M10
KG40	M12x	25		40	16	M12

KR - STILLSKRUER



- Sort riflet plastfot



Enkelte modeller leveres med innsekskant hull

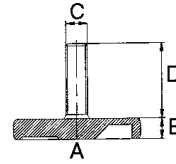
Ø	GJENGE	D [Lengde]				A	B	C		
KR12	M 5x		22			12	6	M 5		
KR15	M 5x	13	17	22	27	37	47	15	6	M 5
KR15	M 6x	13	17	22	27	37	47	15	6	M 6
KR20	M 5x	13	17	22	27	37	47	20	6	M 5
KR20	M 6x	13	17	22	27	37	47	20	6	M 6
KR20	M 8x	12	16	21	26	36	46	20	6	M 8
KR25	M 5x	13	17	22	27	37	47	25	6	M 5
KR25	M 6x	13	17	22	27	37	47	25	6	M 6
KR25	M 8x	16	21	26	36	46		25	6	M 8
KR25	M10x		19	24	34	44	54	25	6	M10
KR29	M 6x		17	22	27	37	47	29	7	M 6
KR29	M 8x	16	21	26	36	46		29	7	M 8
KR29	M10x		19	24	34	44	54	29	7	M10
KR32	M 6x		17	22	27	37	47	32	8	M 6
KR32	M 8x	16	21	26	36	46		32	8	M 8
KR32	M10x		19	24	34	44	54	32	8	M10
KR38	M 6x		17	22	27	37	47	38	9	M 6
KR38	M 8x	16	21	26	36	46		38	9	M 8
KR38	M10x		19	24	34	44	54	38	9	M10
KR44	M 6x		17	22	27	37	47	44	10	M 6
KR44	M 8x	16	21	26	36	46		44	10	M 8
KR44	M10x		19	24	34	44	54	44	10	M10
KR60	M10x		19	24	34	44	54	60	10	M10
KR40	M 8x		21					40	4	M 8

KR40 lav modell

KT - STILLSKRUER

Ø	GJENGE	D [Lengde]						A	B	C
KT 50	M 8 X	17	22	27	37	47	57	50	8	M 8
KT 50	M 10 X	15		25	35	45	55	50	8	M10
KT 55	M 8 X	17	22	27	37	47	57	55	8	M 8
KT 55	M 10 X	15		25	35	45	55	55	8	M10
KT 58	M 10 X	15		25	35	45	55	58	8	M10
KT 60	M 8 X	17	22	27	37	47	57	60	8	M 8
KT 60	M 10 X	15		25	35	45	55	60	8	M10
KT 63	M 10 X	15		25	35	45	55	63	8	M10

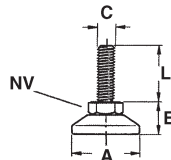
- Sort riflet plastfot
- Materiale PA



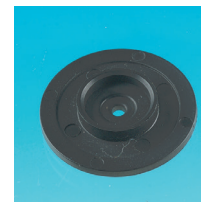
M - STILLSKRUER

- Sort bevegelig plastfot (PA) skruer elzink
- Kryss-spor i bunn for hurtigmontering

Ø	GJENGE	Lengde								A	B	C	NV		
M20	M 8 X	/	20	25	30	40	50			20	11	M 8	13		
M20	M10 X	/ 16	25	30	40	50	60	70	80	90	100	20	11	M10	17
M30	M 8 X	/	20	25	30	40	50			30	11	M 8	13		
M30	M10 X	/ 16	25	30	40	50	60	70	80	100	30	11	M10	17	
M37	M 8 X	/	20	25	30	40	50			37	11	M 8	13		
M37	M10 X	/ 16	25	30	40	50	60	70	80	100	37	11	M10	17	
M37	M12 X	/		30	40	50		80	100	37	11	M12	19		
M47	M 8 X	/	20	25	30	40	50			47	11	M 8	13		
M47	M10 X	/ 16	25	30	40	50	60	70	80	100	47	11	M10	17	
M47	M12 X	/		30	40	50		80	100	47	11	M12	19		
M57	M12 X	/		30	40	50		80	100	57	19	M12	19		
M57	M16 X	/						80		57	19	M16	24		



Enkelte modeller leveres med innsekskant hull



Monteringsplater for fastgjøring til serie M størrelse Ø37+Ø47
H 37 - H 47

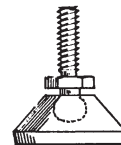


Gummiplater shore A 85 til serie M størrelse Ø37+Ø47
TPE 37 - TPE 47

C - STILLSKRUER

Ø	GJENGE	D [Lengde]			A	B	C	NV
C25	M 8 X	25	34	50	25	14	M 8	-
C30	M 8 X	25	34	50	30	14	M 8	12
C30	M 10 X	25	34	50	30	14	M10	12
C30	M 12 X			40	30	14	M12	12
C44	M 8 X	25	34	50	44	18	M 8	12
C44	M 10 X	25	34	50	44	18	M10	12
C44	M 12 X			40	44	18	M12	12
C50	M 8 X	25	34	50	50	18	M 8	12
C50	M 10 X	25	34	50	50	18	M10	12
C50	M 12 X			40	50	18	M12	12

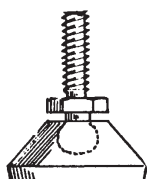
- Sort plastfot (PA zytel) m/kuleledd skruer elzink
- Maks skråvinkel 22°



CC - STILLSKRUER



- Sortplastfot m/metallkappe rustfri
- Maks skråvinkel 22°

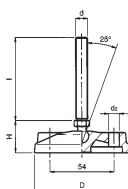


Ø	GJENGE	D [Lengde]			A	B	C	NV
CC 30	M 8 X	25	34	50	30	14	M 8	12
CC 30	M 10 X	25	34	50	30	14	M10	12
CC 47	M 8 X	25	34	50	47	14	M 8	12
CC 47	M 10 X	25	34	50	47	14	M10	12

CP - STILLSKRUER



- Sort nylon fot for tungbelastning
- Kan leveres m/gummifot Shore A 70
- Fot kan leveres m/hull for feste i gulv
- Skruen leveres standard elzink, kan leveres rustfri
- Maks skråvinkel 25°

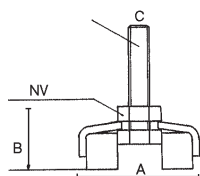


Ø	GJENGE	D [Lengde]			D	H	d	NV
CP40	M10 X	50	66	100	40	27	M10	12
CP40	M12 X	50	66	100	40	27	M12	12
CP50	M10 X	45	66		50	27	M10	12
CP50	M12 X	45	66		50	27	M12	12
CP80	M10 X	45	66		80	27	M10	12
CP80	M12 X	45	66		80	27	M12	12
CP80	M16 X	66	120		80	27	M16	13
CP80	M20 X	100			80	27	M20	13
CP100	M10 X	50	66	100	100	32	M10	12
CP100	M12 X	50	66	100	100	32	M12	14
CP100	M16 X	50	66	100 125 150 200	100	32	M16	20
CP100	M20 X	100	125 150		100	32	M20	20
CP125	M10 X		150		125	37	M10	10
CP125	M12 X		150		125	37	M12	12
CP125	M16 X		150		125	37	M16	16
CP125	M20 X		150		125	37	M20	20
CP125	M24 X		150		125	37	M24	24

CM - MASKINSKO



- Stålkappe m/gummi innlegg, kan leveres rustfri
- Belastning 500 kg
- Flere størrelser og gjengedimensjoner på forespørsel



Ø	GJENGE	D [Lengde]			A	B	C	NV
CM55	M10 X	60	80	100	55	31	M10	17
CM55	M12 X	60	80	100 120	55	33	M12	19
CM55	M16 X		100		55	37	M16	24

CM - MASKINSKO RUSTFRI



- Rustfri stålkappe m/gummi innlegg
- Belastning 500-3500 kg
- Flere størrelser og gjengedimensjoner på forespørsel

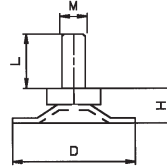
Ø		D [Lengde]					A	B
CM60	M--X	50	70	100	150	180	230	60 31
CM80	M--X	50	70	100	150	180	230	80 32
CM100	M--X	50	70	100	150	180	230	100 36
CM120	M--X	50	70	100	150	180	230	120 41
CM140	M--X	50	70	100	150	180	230	140 43

M--: Gjengestørrelser M12/M16/M20/M24/M30/M36/M42

MS - STILLSKRUER

Ø	GJENGE	Lengde							A	B	C	NV
MS30	M 8X /	16	20	30	40	50	60	70	30	11	M 8	13
MS30	M10X /	16	20	30	40	50	60	70	30	13	M10	17
MS45	M 8X /	16	20	30	40	50	60	70	45	11	M 8	13
MS45	M10X /	16	20	30	40	50	60	70	45	11	M10	17
MS50	M 8X /	16	20	30	40	50	60	70	50	13	M 8	13
MS50	M10X /	16	20	30	40	50	60	70	50	14	M10	17
MS60	M 8X /	16	20	30	40	50	60	70	60	14	M 8	13
MS60	M10X /	16	20	30	40	50	60	70	60	15	M10	17

- Bevegelig metallfot med festehull, skruer elzink
- Kryss-spor i bunn for hurtigmontering
- Enkelte modeller kan leveres med innsekskant hull

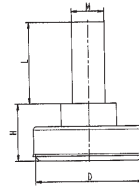


Kunststoffkapper for stillskruer MS Ø30, Ø45, Ø60.

MM - STILLSKRUER

Ø	GJENGE	Lengde							A	B	C	NV
MM23	M 8X /	16	20	30	40	50	60	70	23	16	M 8	13
MM23	M10X /	16	20	30	40	50	60	70	23	17	M10	17
MM28	M 8X /	16	20	30	40	50	60	70	28	16	M 8	13
MM28	M10X /	16	20	30	40	50	60	70	28	17	M10	17
MM33	M 8X /	16	20	30	40	50	60	70	33	16	M 8	13
MM33	M10X /	16	20	30	40	50	60	70	33	17	M10	17

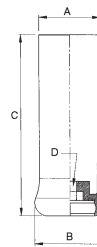
- Bevegelig plastfot m/kappe av rustfritt stål, skruer elzink
- Kryss-spor i bunn for hurtig montering



JXS - STILLSKRUE M/DEKKHYLSE

	A	B	C	D
JXS 25	30	35	90	M 8x60
JXS 28	33	38	96	M10x60
JXS 32	38	44	113	M10x60
JXS 38	45	51	134	M10x60
JXS 40	47	53	138	M10x60
JXS 42	49	55	142	M10x60
JXS 50	59	67	175	M10x60
JXS 60	70	81	210	M10x60

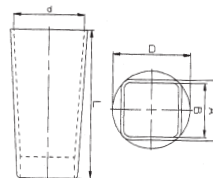
- Material PP
- Standardfarge sort m/glideflate i farge natur



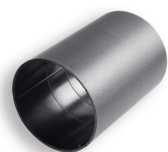
RQ - DEKKRØR FOR KVADRATRØR

Rør dim.	D	A	B	d	L
RQ 25x25	36,5	28,5	25,5	33	70
RQ 30x30	46,5	33,5	30,5	40	70

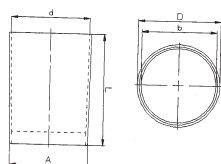
- Materiale ABS
- Standardfarge sort



RR - DEKRØR FOR RUNDE RØR



- Materiale ABS
- Standardfarve sort

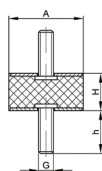


Rør dim.	D	A	B	d	L
RR 60	67	63,5	60,5	64	90

SDA - VIBRASJONSDEMPER M/2 GJENGEBOLTER



- Materiale Nitrilgummi (NBR) shore A55
- Elforzinket skrue og metallplater

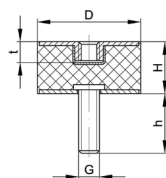


A	H	GxH	A	H	GxH
SDA 10	10	2XM4X10	SDA 40	20	2XM8X23
SDA 10	15	2XM4X10	SDA 40	25	2XM8X23
SDA 15	10	2XM4X10	SDA 40	30	2XM8X23
SDA 15	15	2XM4X10	SDA 40	40	2XM8X23
SDA 15	20	2XM4X10	SDA 50	20	2XM10X28
SDA 15	30	2XM4X10	SDA 50	30	2XM10X28
SDA 20	10	2XM6X18	SDA 50	40	2XM10X28
SDA 20	15	2XM6X18	SDA 50	45	2XM10X28
SDA 20	20	2XM6X18	SDA 50	50	2XM10X28
SDA 20	25	2XM6X18	SDA 70	45	2XM12X37
SDA 25	10	2XM6X18	SDA 75	25	2XM12X37
SDA 25	15	2XM6X18	SDA 75	40	2XM12X37
SDA 25	17	2XM6X18	SDA 75	50	2XM12X37
SDA 25	20	2XM6X18	SDA 100	40	2XM16X41
SDA 25	25	2XM6X18	SDA 100	55	2XM16X41
SDA 25	30	2XM6X18	SDA 100	75	2XM16X41
SDA 30	15	2XM8X20	SDA 100	100	2XM16X41
SDA 30	20	2XM8X20	SDA 150	40	2XM20X46
SDA 30	25	2XM8X20	SDA 150	100	2XM20X46
SDA 30	30	2XM8X20			

SDB - VIBRASJONSDEMPER M/1 GJENGEBOLT + 1 GJENGE MUTTER



- Materiale Nitrilgummi (NBR) shore A55
- Elforzinket skrue og metallplate

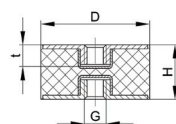


A	H	GxH	t	A	H	GxH	t
SDB 10	10	M4X10	3	SDB 40	25	M8X23	8
SDB 10	15	M4X10	3	SDB 40	30	M8X23	8
SDB 15	10	M4X10	3	SDB 40	40	M8X23	8
SDB 15	15	M4X10	3	SDB 50	20	M10X28	10
SDB 15	20	M4X10	3	SDB 50	30	M10X28	10
SDB 15	30	M4X10	3	SDB 50	40	M10X28	10
SDB 20	15	M6X18	6	SDB 50	45	M10X28	10
SDB 20	20	M6X18	6	SDB 50	50	M10X28	10
SDB 20	25	M6X18	6	SDB 70	45	M12X37	10
SDB 25	15	M6X18	6	SDB 75	25	M12X37	12
SDB 25	17	M6X18	6	SDB 75	40	M12X37	12
SDB 25	20	M6X18	6	SDB 75	50	M12X37	12
SDB 25	25	M6X18	6	SDB 100	40	M16X41	16
SDB 25	30	M6X18	6	SDB 100	55	M16X41	16
SDB 30	15	M8X20	8	SDB 100	75	M16X41	16
SDB 30	20	M8X20	8	SDB 100	100	M16X41	16
SDB 30	25	M8X20	8	SDB 150	40	M20X46	20
SDB 30	30	M8X20	8	SDB 150	100	M20X46	20
SDB 40	20	M8X23	8				

SDC - VIBRASJONSDEMPER M/2 GJENGEMUTTERE

D	H	G	t	D	H	G	t
SDC 10	15	2XM4	3	SDC 40	25	2XM8	8
SDC 15	10	2XM4	3	SDC 40	30	2XM8	8
SDC 15	15	2XM4	3	SDC 40	40	2XM8	8
SDC 15	20	2XM4	3	SDC 50	30	2XM10	10
SDC 15	30	2XM4	3	SDC 50	40	2XM10	10
SDC 20	15	2XM6	6	SDC 50	45	2XM10	10
SDC 20	20	2XM6	6	SDC 50	50	2XM10	10
SDC 20	25	2XM6	6	SDC 70	45	2XM12	12
SDC 25	17	2XM6	6	SDC 75	40	2XM12	12
SDC 25	20	2XM6	6	SDC 75	50	2XM12	12
SDC 25	25	2XM6	6	SDC 100	40	2XM16	16
SDC 25	30	2XM6	6	SDC 100	55	2XM16	16
SDC 30	20	2XM8	8	SDC 100	75	2XM16	16
SDC 30	25	2XM8	8	SDC 100	100	2XM16	16
SDC 30	30	2XM8	8	SDC 150	40	2XM20	20
SDC 40	20	2XM8	8	SDC 150	100	2XM20	20

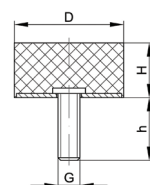
- Materiale Nitrilgummi (NBR) shore A55
- Elforzinket skrue og metallplate



SDL - VIBRASJONSDEMPER M/1 GJENGE BOLT

D	H	Gxh	D	H	Gxh
SDL 10	10	M4X10	SDL 40	20	M8X23
SDL 10	15	M4X10	SDL 40	25	M8X23
SDL 15	10	M4X10	SDL 40	30	M8X23
SDL 15	15	M4X10	SDL 40	40	M8X23
SDL 15	20	M4X10	SDL 50	20	M10X28
SDL 15	30	M4X10	SDL 50	30	M10X28
SDL 20	10	M6X18	SDL 50	40	M10X28
SDL 20	15	M6X18	SDL 50	45	M10X28
SDL 20	20	M6X18	SDL 50	50	M10X28
SDL 20	25	M6X18	SDL 70	45	M12X37
SDL 25	10	M6X18	SDL 75	25	M12X37
SDL 25	15	M6X18	SDL 75	40	M12X37
SDL 25	17	M6X18	SDL 75	50	M12X37
SDL 25	20	M6X18	SDL 100	40	M16X41
SDL 25	25	M6X18	SDL 100	55	M16X41
SDL 25	30	M6X18	SDL 100	75	M16X41
SDL 30	15	M8X20	SDL 100	100	M16X41
SDL 30	20	M8X20	SDL 150	40	M20X46
SDL 30	25	M8X20	SDL 150	100	M20X46
SDL 30	30	M8X20			

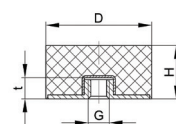
- Materiale Nitrilgummi (NBR) shore A55
- Elforzinket skrue og metallplater



SDE - VIBRASJONSDEMPER M/1 GJENGEMUTTERE

D	H	Gxh	D	H	Gxh
SDE 10	10	M4	SDE 40	20	M8
SDE 10	15	M4	SDE 40	25	M8
SDE 15	10	M4	SDE 40	30	M8
SDE 15	15	M4	SDE 40	40	M8
SDE 15	20	M4	SDE 50	20	M10
SDE 15	30	M4	SDE 50	30	M10
SDE 20	10	M6	SDE 50	40	M10
SDE 20	15	M6	SDE 50	45	M10
SDE 20	20	M6	SDE 50	50	M10
SDE 20	25	M6	SDE 70	45	M12
SDE 25	10	M6	SDE 75	25	M12
SDE 25	15	M6	SDE 75	40	M12
SDE 25	17	M6	SDE 75	50	M12
SDE 25	20	M6	SDE 100	40	M16
SDE 25	25	M6	SDE 100	55	M16
SDE 25	30	M6	SDE 100	75	M16
SDE 30	15	M8	SDE 100	100	M16
SDE 30	20	M8	SDE 150	40	M20
SDE 30	25	M8	SDE 150	100	M20
SDE 30	30	M8			

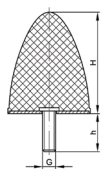
- Materiale Nitrilgummi (NBR) shore A55
- Elforzinket skrue og metallplate



SDF - VIBRASJONSDEMPER M/SKRUE



- Materiale Nitrilgummi (NBR) shore A55
- Elforzinket skrue og metallplate

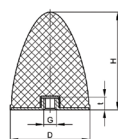


	A	H	Gxh
SDF 20	20	24	M6X18
SDF 30	30	36	M8X20
SDF 50	50	61	M10X28
SDF 75	75	89	M12X33

SDG - VIBRASJONSDEMPER M/GJENGEMUTTER



- Materiale Nitrilgummi (NBR) shore A55
- Elforzinket skrue og metallplate

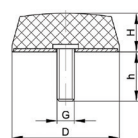


	A	H	G	t
SDG 20	20	24	M6	6
SDG 30	30	36	M8	8
SDG 50	50	61	M10	10
SDG 75	75	89	M12	12

SDH - VIBRASJONSDEMPER KONISK M/1 GJENGE BOLT



- Materiale Nitrilgummi (NBR) shore A55
- Elforzinket skrue og metallplate

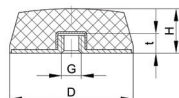


	A	H	Gxh
SDH 25	25	17	M6X18
SDH 50	50	18	M10X28

SDI - VIBRASJONSDEMPER KONISK M/1 GJENGE MUTTER



- Materiale Nitrilgummi (NBR) shore A55
- Elforzinket skrue og metallplate

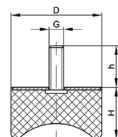


	A	H	G	t
SDI 25	25	17	M6	6
SDI 50	50	18	M10	10

SDJ - VIBRASJONSDEMPER M/1 GJENGE BOLT



- Materiale Nitrilgummi (NBR) shore A55
- Elforzinket skrue og metallplate

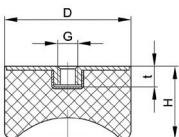


	A	H	Gxh
SDJ 25	25	18,5	M6X18
SDJ 40	40	28,5	M8X23
SDJ 50	50	28,5	M10X28

SDK - VIBRASJONSDEMPER M/1 GJENGE MUTTER



- Materiale Nitrilgummi (NBR) shore A55
- Elforzinket skrue og metallplate

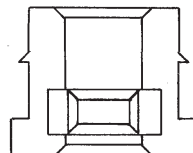


	A	H	G	t
SDK 25	25	18,5	M6	6
SDK 40	40	28,5	M8	8
SDK 50	50	28,5	M10	10

J/JV - PLASTINNSATS FOR FIRKANTRØR M/STÅLGJENGER

A	B	C	D	A	B	C	D		
J 16 X 16	M 6	1,5	6	12	J 20 X 16	M 8	1,5	7	12
JV22 X 22	M 8	1,5	5	33	JV25 X 20	M 8	1,0-2,0	5	33
J 20 X 20	M 8	1,5	6	15	J 30 X 15	M 8	1,5	10	12
J 25 X 25	M 8	1,5	7	14	J 30 X 20	M 10	1,5	7	14
J 25 X 25	M 10	1,5	7	13	J 30 X 25	M 10	1,5	8	13
J 25 X 25 X 4	M 10	1,5	7	16	J 35 X 20	M 10	1,5	8	16
J 27 X 27	M 10	1,5	7	12	J 40 X 20	M 10	1,5	8	16
J 30 X 30	M 10	1,5	8	13	JV40 X 25	M 8	2,0	5	33
J 30 X 30 X 2,5	M 10	2,5	8	13	JV45 X 25	M 10	1,0-2,0	5	23
J 35 X 35	M 10	1,5	8	13	J 40 X 30	M 10	1,5	8	15
J 40 X 40	M 10	1,5	8	13	J 50 X 25	M 10	1,5	8	13
J 45 X 45	M 10	1,5	8	13	J 50 X 30	M 10	1,0-2,0	5	30
J 50 X 50 X 1,5	M 10	2,0	5	33	J 50 X 40	M 10	1,5	8	17
J 55 X 55 X 2	M 10	2,0	5	33	JV60 X 25	M 10	2,0	5	33
JV60 X 60	M 10	2,0	5	33	J 60 X 30	M 10	1,5	8	14
JV60 X 60	M 12	2,0	5	33	JV70 X 30	M 10	2,0	5	33
J 80 X 80 X 2	M 10	2,0	5	33	JV80 X 30	M 10	1,0-2,0	5	33

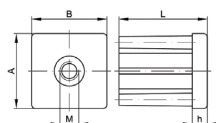
- Materiale PE
- Standard farve sort
- Ved bestilling oppgi rørets utvendige mål + godstykkelse



JS - PLASTINNSATS FOR FIRKANTRØR M/STÅLGJENGER KRAFTIG MODELL

AXB	GJENGE M				h	l	BELASTN.	
JS 30X30X1,5	M10	M12	M14	M16	6	33	550	
JS 30X30X2,0	M10	M12	M14	M16	6	33	550	
JS 40X40X1,5	M10	M12	M14	M16	M20	8	43	800
JS 40X40X2,0	M10	M12	M14	M16	M20	8	43	800
JS 40X40X2,5	M10	M12	M14	M16	M20	8	43	800
JS 40X40X3,0	M10	M12	M14	M16	M20	8	43	800
JS 40X40X4,0	M10	M12	M14	M16	M20	8	43	800
JS 50X50X1,5		M12	M14	M16	M20	10	55	950
JS 50X50X2,0		M12	M14	M16	M20	10	55	950
JS 50X50X2,5		M12	M14	M16	M20	10	55	950
JS 50X50X3,0		M12	M14	M16	M20	10	55	950
JS 50X50X4,0		M12	M14	M16	M20	10	55	950
JS 60X60X2,0		M12	M14	M16	M20	10	55	1100
JS 60X60X3,0		M12	M14	M16	M20	10	55	1100
JS 60X60X4,0		M12	M14	M16	M20	10	55	1100

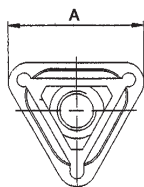
- Materiale PA6/GF
- Gjenge messing fornicket
- Standard farge sort



J - PLASTINNSATS FOR TREKANTRØR M/STÅLGJENGE

A	B	C	D	
J 35x35x35	M 10	1,5-2,0	7,5	15

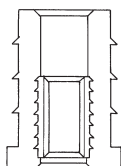
- Materiale PE
- Standard farve sort



CG - PLASTINNSATS FOR FIRKANTRØR M/GJENGEMUFFE

A	B	C	D	
CG 20X20	M 8	1,5	7	30
CG 25X25	M 8	1,5	7	30
CG 25X25	M 10	1,5	7	30
CG 30X30	M 8	1,5	7	30
CG 30X30	M 10	1,5	7	30
CG 30X20	M 8	1,5	7	30

- Materiale PE
- Standard farve sort



JRS - PLASTINNSATS FOR RUNDE RØR M/STÅLGJENGER KRAFTIG MODELL



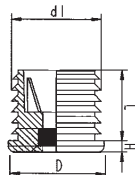
- Materiale PA6/GF
- Gjenge messing forniklet
- Standard farge sort

AXB	GJENGE M				h	l	BELASTN.	
JRS 30X1,5	M10	M12	M14	M16	8	43	550	
JRS 30X2,0	M10	M12	M14	M16	8	43	550	
JRS 30X2,5	M10	M12	M14	M16	8	43	800	
JRS 38X1,5	M10	M12	M14	M16	8	43	600	
JRS 38X2,0	M10	M12	M14	M16	8	43	600	
JRS 50X1,5		M12	M14	M16	M20	11	49	850
JRS 50X2,0		M12	M14	M16	M20	11	49	850
JRS 50X2,5		M12	M14	M16	M20	11	49	850
JRS 60X1,5			M14	M16	M20	12	57	1000
JRS 60X2,0			M14	M16	M20	12	57	1000
JRS 60X2,5			M14	M16	M20	12	57	1000
JRS 60X3,0			M14	M16	M20	12	57	1000

JRL - PLASTINNSATS FOR RUNDE RØR M/STÅLGJENGE



- Materiale nylon PA 6
- Standard farve sort



D	GJENGE	B	GODS	H	L	D	GJENGE	B	GODS	H	L
JRL 22X1,5-2	M 8	1,5-2,0	4	25		JRL 42X1,5	M10	1,5-2,0	4	25	
JRL 25X1,5-2	M 8	1,5-2,0	4	25		JRL 42X2-2,5	M10	2,0-2,5	4	25	
JRL 28X1,5-2	M10	1,5-2,0	4	25		JRL 45X1,5	M10	1,5-2,0	4	25	
JRL 30X1,5-2	M10	1,5-2,0	4	25		JRL 45X2-2,5	M10	2,0-2,5	4	25	
JRL 30X2-2,5	M10	2,0-2,5	4	25		JRL 50X1,5	M10	1,5-2,0	4	25	
JRL 32X1,5	M10	1,5-2,0	4	25		JRL 50X2-2,5	M10	2,0-2,5	4	25	
JRL 32X2-2,5	M10	2,0-2,5	4	25		JRL 54X1,5	M10	1,5-2,0	4	25	
JRL 35X1,5	M10	1,5-2,0	4	25		JRL 54X2-2,5	M10	2,0-2,5	4	25	
JRL 35X2-2,5	M10	2,0-2,5	4	25		JRL 55X2-2,5	M10	2,0-2,5	4	25	
JRL 38X1,5	M10	1,5-2,0	4	25		JRL 60X1,5	M10	1,5-2,0	4	25	
JRL 38X2-2,5	M10	2,0-2,5	4	25		JRL 60X2-2,5	M10	2,0-2,5	4	25	
JRL 40X1,5	M10	1,5-2,0	4	25		JRL 70X3	M10	3,0	4	25	
JRL 40X2-2,5	M10	2,0-2,5	4	25							

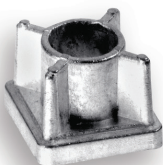
JRX - EKSPANDER



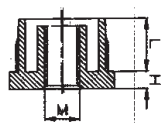
- Materiale PA 6
- Mutter elforzinket stål

D	H	L	D	H	L	D	H	L			
JRX 18X1,5 M6	18	5	37	JRX 30X2,0 M10	30	5	37	JRX 50X1,5 M10	50	5	34
JRX 20X1,0 M8	20	5	37	JRX 32X1,5 M10	32	5	37	JRX 50X2,0 M10	50	5	34
JRX 20X1,5 M8	20	5	37	JRX 35X1,5 M10	35	5	37	JRX 60X2,0 M10	60	5	34
JRX 22X1,5 M8	22	5	42	JRX 35X2,0 M10	35	5	37	JRX 60X2,5 M10	60	5	34
JRX 25X1,0 M10	25	5	37	JRX 38X1,5 M10	38	5	37	JRX 76X1,5 M10	76	5	33
JRX 25X1,5 M10	25	5	37	JRX 40X1,5 M10	40	3	35	JRX 80X1,5 M10	80	5	33
JRX 25X1,5 M10	28	5	42	JRX 40X2,0 M10	40	5	37	JRX 80X2,0 M10	80	5	33
JRX 28X2,0 M10	28	5	37	JRX 42X2,0 M10	42	5	37				
JRX 30X1,5 M10	30	5	36	JRX 45X2,0 M10	45	5	37				

JM - ZINKINNSATS FOR FIRKANTRØR M/GJENGE



- Materiale i zink

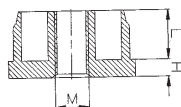


A	B	H	L	A	B	H	L		
JM 25X25X1,5	M10	1,5	5	15	JM 40X40X2,5	M10	2,5	5	15
JM 25X25X2	M10	2,0	5	15	JM 50X25X2	M10	2,0	5	15
JM 30X30X1,5	M10	1,5	5	15	JM 50X30X2	M10	2,0	5	15
JM 30X30X2	M10	2,0	5	15	JM 60X30X2	M10	2,0	5	15
JM 30X30X2,25	M10	2,25	5	15	JM 60X30X2,25	M10	2,25	5	15
JM 30X30X2,5	M10	2,5	5	15	JM 80X30X2,5	M10	2,5	5	15
JM 30X30X2	M12	2,0	5	15	JM 120X30X2,5	M12	2,5	5	15
JM 40X40X2	M10	2,0	5	15					

JMR - ZINKINNSATS FOR RUNDE RØR M/GJENGE



- Materiale i zink

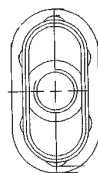


A	B	H	L	
JMR 32X1,5	M10	1,5	5	15
JMR 32X2	M10	2,0	5	15
JMR 38X1,5	M10	1,5	5	15
JMR 38X2	M10	2,0	5	15
JMR 60X2	M10	2,0	5	13

JMO - ZINKINNSATS FOR OVALE RØR M/GJENGE

A	B	H	L
JMO 38X20X1,5	M10	1,5	5 15
JMO 38X20X2	M10	2,0	5 15

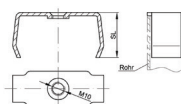
· Materiale i zink



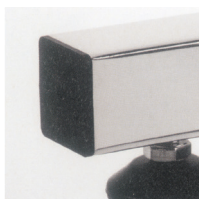
JMS - STÅLINNSATS FOR FIRKANT RØR M/GJENGE

A	B	H	L
JMS 30X30X1,5-2,5	M10	1,5-2,5	3 30
JMS 50X25X1,5-2,5	M10	1,5-2,5	3 30
JMS 50X30X1,5-2,5	M10	1,5-2,5	3 30
JMS 60X30X1,5-2,5	M10	1,5-2,5	3 30
JMS 70X20X1,5-2,5	M10	1,5-2,5	3 30
JMS 70X30X1,5-2,5	M10	1,5-2,5	3 30

· Materiale i stål
· Elforzinket

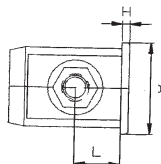


JEV - INNSATSER M/MUTTER FOR LIGGENDE KVADRAT RØR



A	L	H
JEV 20X20X1,0 M 8	10,0	2
JEV 20X20X1,5 M 8	10,0	2
JEV 20X20X2,0 M 8	10,0	2
JEV 25X25X1,5 M 8	12,5	2
JEV 25X25X1,5 M10	12,5	2
JEV 30X30X1,5 M10	15,0	2
JEV 30X30X2,0 M10	15,0	2
JEV 35X35X1,5 M10	20,0	6
JEV 40X40X1,5 M10	20,0	7

· Materiale nylon PA6
· Standardfarve sort

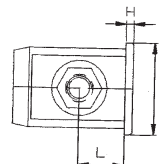


JEH - INNSATSER M/MUTTER FOR LIGGENDE REKTANGULÆRE RØR



A	L	H
JEH 30X20X1,5 M 8	15	2
JEH 40X20X1,5 M 8	30	2
JEH 40X30X1,5 M10	30	2
JEH 45X25X2,0 M10	20	3
JEH 50X25X2,0 M10	20	3
JEH 50X30X1,5 M10	20	3
JEH 60X30X1,5 M10	20	5

· Materiale nylon PA6
· Mutter på rørets kortsider

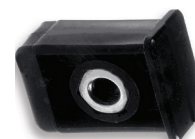
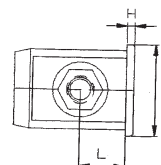


JER - INNSATSER M/MUTTER FOR LIGGENDE REKTANGULÆRE RØR



A	L	H
JER 30X20X2,0 M 8	15	2,5
JER 50X30X1,5 M10	20	7,0
JER 60X30X1,5 M10	20	5,0

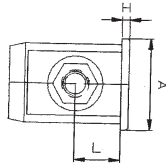
· Materiale nylon PA6
· Mutter på rørets langside



JEO - INNSATSER M/MUTTER FOR LIGGENDE FLATOVALE RØR



· Materiale nylon PA6



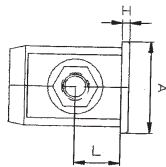
	A	L	H
JEO 30X15X1,5 M 8	15	5	
JEO 45X17X2,0 M 8	20	5	
JEO 45X17X2,0 M10	20	5	
JEO 50X25X2,0 M10	22	5	



JEF - INNSATSER M/MUTTER FOR LIGGENDE RUNDE RØR



· Materiale nylon PA6

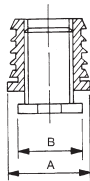


	A	L	H
JEF 25X1,5 M8	20	4	
JEF 30X1,5 M8	20	4	
JEF 32X1,5 M8	20	4	
JEF 40X2,0 M8	20	5	

JL - STILSKRUER M/INNSATS FIRKANTRØR



· Materiale PA nylon / PE polyeten [+]
· Standardfarve sort

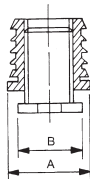


A	B	C	H	h	A	B	C	H	h
JL 20X20	M10x24	1,0-2,0	5,0	4,0	JL 30X20	M12x27	1,0-2,0	5,0	5,0
JL 25X25	M16x26+	1,0-2,0	5,5	6,0	JL 40X20	M12x27	1,5	5,0	5,0
JL 25X25	M16x60	1,0-2,0	5,5	6,0	JL 40X30	M22x30	1,0-2,0	5,0	5,0
JL 30X30	M20x25+	1,0-2,0	5,5	6,0	JL 40X30X3	M22x30	3,0	5,0	5,0
JL 30X30	M22x60	1,0-2,0	5,5	6,0	JL 50X20	M12x30	1,0-2,0	5,0	5,0
JL 35X35	M22x20	1,5	5,0	5,0	JL 50X30	M20x42	1,5	5,0	5,0
JL 40X40	M22x20	2,0	5,0	5,0	JL 60X30	M22x47	1,0-2,0	5,0	4,0
JL 40X40	M22x60	1,0-2,0	5,0	5,0	JL 60X40	M22x30	1,0-2,0	5,0	5,0
					JL 80X40	M22x30	1,0-2,0	5,0	5,0

JLR - STILSKRUER M/INNSATS RUNDE RØR



· Materiale PA nylon
· Standardfarve sort

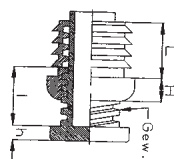


A	B	C	H	h	A	B	C	H	h
JLR 20	M12x27	1,0-1,5	5	5	JLR 35	M22x29	1,5-2,0	5	5
JLR 22	M12x27	1,0-1,5	5	5	JLR 38	M22x29	1,5-2,0	5	5
JLR 25	M12x27	1,0-1,5	5	5	JLR 40	M22x29	1-1,5	5	5
JLR 28	M16x31	1,0-1,5	5	5	JLR 42	M22x29	1,5-2,0	5	5
JLR 30	M22x29	1,5-2,0	5	5	JLR 45	M22x29	2,0	5	5
JLR 32	M22x29	1,0-2,0	5	5	JLR 50	M22x29	1,5-2,0	5	5

JLO - STILSKRUER M/INNSATS OVALE RØR



· Materiale PA nylon / PE polyeten[+]
· Standardfarve sort

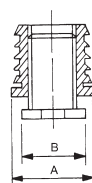


	AXB	GW	H	h
JLO 30X20	M12x25	1,5-2,0	5	5
JLO 40X20	M12x25	1,5-2,0	5	5
JLO 50X30	M22x25	1,5-2,0	5	5
JLO 60X30	M20x20	2,0-3,0	9	5

JLD - STILLSKRUE M/INNSATS TREKANT RØR

A	B	C	H	h
JLD 30X30X30	M12x27	1,0-2,0	5	5
JLD 35X35X35	M12x27	1,5	5	5
JLD 35X35X35X2	M12x27	2,0	5	5
JLD 40X40X40	M16x31	1,0-2,0	5	5

- Materiale PA nylon
- Standardfarve sort

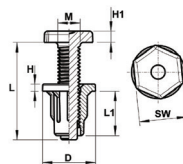


JLW - STILLSKRUE M/INNSATS FOR TRE



A	B	H	H1
JLW 19-11	M8x35	2,5	4
JLW 25-13	M10x42	2,5	4
JLW 45-13	M10x42	2,5	4

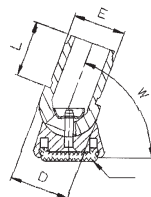
- Materiale PA/GF [nylon]
- Standardfarve sort



GKN - KUNSTOFFGLIDER M/KULELEDD

FOT Ø	D	GODS	L	W
GKN25	18	1,5-2,0	24	19 ⁰
GKN25	19	1,5-2,0	24	19 ⁰
GKN25	20	1,5-2,0	24	19 ⁰
GKN25	22	1,5-2,0	24	19 ⁰
GKN25	25	1,5-2,0	24	19 ⁰
GKN25	28	1,5-2,0	24	19 ⁰
GKN30	19	1,5-2,0	24	19 ⁰
GKN30	20	1,5-2,0	24	19 ⁰
GKN30	22	1,5-2,0	24	19 ⁰
GKN30	25	1,5-2,0	24	19 ⁰
GKN30	28	1,5-2,0	24	19 ⁰

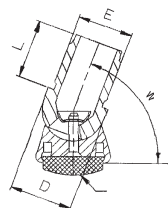
- Materiale fot [PA] nylon
- Materiale innsats [PE] polyeten
- Bestillingseksempel: GKN30 18x1,5



GFN - FILTGLIDER M/KULELEDD

FOT Ø	D	GODS	L	W
GFN25	18	1,5-2,0	24	19 ⁰
GFN25	19	1,5-2,0	24	19 ⁰
GFN25	20	1,5-2,0	24	19 ⁰
GFN25	22	1,5-2,0	24	19 ⁰
GFN25	25	1,5-2,0	24	19 ⁰
GFN25	28	1,5-2,0	24	19 ⁰
GFN30	19	1,5-2,0	24	19 ⁰
GFN30	20	1,5-2,0	24	19 ⁰
GFN30	22	1,5-2,0	24	19 ⁰
GFN30	25	1,5-2,0	24	19 ⁰
GFN30	28	1,5-2,0	24	19 ⁰

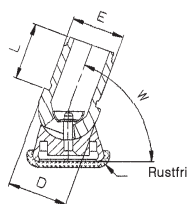
- Materiale fot [PA] nylon m/filt
- Materiale innsats [PE] polyeten
- Bestillingseksempel: GFN30 18x1,5



GMN - KUNSTOFFGLIDER RUSTFRIFOT M/KULELEDD



- Materiale fot (PA) nylon m/rustfri metallglider
- Materiale innsats (PE) polyeten
- Bestillingseksempel: GM30 18x1,5

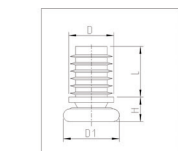


FOT Ø	D	GODS	L	W
GMN25	18	1,5-2,0	24	19 ⁰
GMN25	19	1,5-2,0	24	19 ⁰
GMN25	20	1,5-2,0	24	19 ⁰
GMN25	22	1,5-2,0	24	19 ⁰
GMN25	25	1,5-2,0	24	19 ⁰
GMN25	28	1,5-2,0	24	19 ⁰
GMN30	19	1,5-2,0	24	19 ⁰
GMN30	20	1,5-2,0	24	19 ⁰
GMN30	22	1,5-2,0	24	19 ⁰
GMN30	25	1,5-2,0	24	19 ⁰
GMN30	28	1,5-2,0	24	19 ⁰

GKP - TILTGLIDER



- Materiale PA/PVC



	D	GODS	L	W	
GKP23	14X2	14	2,0	21	24
GKP23	16X1,5-2,0	16	1,5-2,0	21	24
GKP23	18X1,5-2,0	18	1,5-2,0	21	24
GKP23	20X1,5-2,0	20	1,5-2,0	21	24
GKP23	22X1,5-2,0	22	1,5-2,0	21	24

GKM - TILTGLIDER M/METALLFLATE



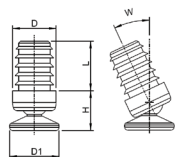
- Materiale PVC/rustfritt stål

	D	GODS	L	W	
GKM23	16X1,5-2,0	16	2,0	21	24
GKM23	18X1,5-2,0	18	1,5-2,0	21	24
GKM23	20X1,5-2,0	20	1,5-2,0	21	24
GKM23	22X1,5-2,0	22	1,5-2,0	21	24
GKM23	25X1,5-2,0	25	1,5-2,0	21	24

GOL - KUNSTOFFGLIDER M/KULELEDD



- Materiale PA/PP

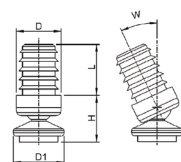


	D	GODS	L	W	
GOL22	16X1,5-2,0	16	2,0	25	25
GOL22	18X1,5-2,0	18	1,5-2,0	25	25
GOL25	20X1,5-2,0	20	1,5-2,0	25	25
GOL25	22X1,5-2,0	22	1,5-2,0	25	25

GOF - KUNSTOFFGLIDER M/FILTFOT

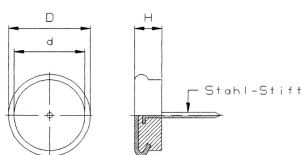


- Materiale PA/PP



	D	GODS	L	W	
GOF22	16X1,5-2,0	16	2,0	25	25
GOF22	18X1,5-2,0	18	1,5-2,0	25	25
GOF25	20X1,5-2,0	20	1,5-2,0	25	25
GOF25	22X1,5-2,0	22	1,5-2,0	25	25

QSM - GLIDESTIFT AV STÅL/GUMMI



D	d	H	Stift L
QSM 18	15	10	15
QSM 20	17	10	15
QSM 25	20	10	15
QSM 28	23	11	15
QSM 30	27	10	15
QSM 35	30	10	23
QSM 40	33	11	27

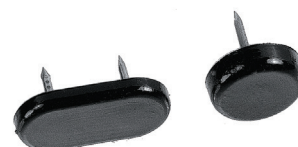
- For stolben
- Materiale rustfritt stål
- Med gummi mellomlegg
- Siste tall angir utv. mål på fot
- Andre dimensjoner kan leveres



QS - GLIDESTIFT AV NYLON

D	LxB	H	A	Stift L
QS 15		5		15
QS 18		5		16
QS 20		5		16
QS 22		6		16
QS 30		5		16
QS	35x18	5	17,3	11
QS	44x18	5	25,5	13
QS	44x20	5	25,5	12

- For stolben
- Leveres i hvit og brun
- Siste tall angir utv. mål på fot
- Andre dimensjoner kan leveres



QSF - FILTGLIDER



D	LxB	H	A	Stift L
QSF 16		9,5		15
QSF 20		9,5		16
QSF 24		9,5		16
QSF 28		9,5		16
QSF 32		9,5		15
QSF	31x18	12,3	17,5	12
QSF	38x18	12,3	25,6	12
QSF	40x25	12,3	25,3	12

- For stolben
- Filt støpt fast i nylon
- Leveres i hvit og brun
- Siste tall angir utv. mål på fot
- Andre dimensjoner kan leveres



QMF - FILTGLIDER M/SKRUE

D	H	Stift L
QMF 18	9	15
QMF 20	9	15
QMF 22	9	15
QMF 25	10	15
QMF 28	10	15
QMF 30	10	15
QMF 35	11	18

- For stolben
- Filt på stol fot m/skrue
- Siste tall angir utv. mål på fot
- Andre dimensjoner kan leveres



QVM - GLIDESTIFT AV STÅL

D	H	Stift L
QVM 10	3	15
QVM 12	3	15
QVM 15	3	15
QVM 20	5	15
QVM 25	5	15
QVM 30	5	15
QVM 35	5	15

- For stolben
- Materiale elforzinket stål
- Siste tall angir utv. mål på fot
- Andre dimensjoner kan leveres



QWM - GLIDESTIFT AV STÅL

D	H	Stift L
QWM 10	3	
QWM 13	3	
QWM 15	3	
QWM 20	5	

- Med 3 tagger
- For stolben
- Materiale elforzinket stål
- Siste tall angir utv. mål på fot
- Andre dimensjoner kan leveres

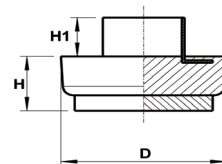


QRF - FILTGLIDER (RØRHYLSE)



- For stolben
- Filt støpt fast i nylon
- Leveres i hvit og brun
- Siste tall angir utv. mål på fot
- Andre dimensjoner kan leveres

D	LxB	H	RØR L	RØR Ø
QRF 18	7	5	9	
QRF 22	7	5	9	
QRF 26	7	5	9	
QRF 37	7	5	9	



QRS - GLIDESTIFT AV NYLON (RØRHYLSE)



- For stolben
- Leveres i hvit og brun
- Siste tall angir utv. mål på fot
- Andre dimensjoner kan leveres

D	LxB	H	RØR L	RØR Ø
QRS 20		5	5	9
QRS 22		5	5	9
QRS 26		5	5	9
QRS 30		5	5	9
QRS 30X17	30X17	5	5	9
QRS 50X20	50X20	5	5	9

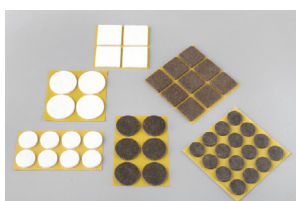
QSP - PUR ANTISIKLI M/SKRUE



- For stolben
- Materiale PA/PUR
- Standardfarge sort

D	H	Stift L
QSP 20	10	15
QSP 25	10	15
QSP 30	10	15

QF - SELVKLEBENDE FILT



- Selvklebende filt på ark
- Standardfarger hvit, brun
- Andre størrelser/tykkelser kan leveres
- Spesialmål på bestilling

D	H	ANTALL KARTONG/PLATE	D	H	ANTALL KARTONG/PLATE
QF 10	1,5	5076/180	QF 20X20	3,5	1000/50
QF 14	3,5	1500/60	QF 25X25	3,5	1024/32
QF 16	3,5	1000/50	QF 30X30	3,5	1008/21
QF 18	3,5	1000/40	QF 34X34	3,5	504/12
QF 20	3,5	1000/50	QF 40X40	3,5	504/12
QF 22	3,5	1000/50	QF 45X45	3,5	500/10
QF 24	3,5	1000/36	QF 50X50	3,5	400/8
QF 26	3,5	1024/32	QF 30X20	3,5	1008/28
QF 28	3,5	1008/24	QF 35X25	3,5	1000/20
QF 30	3,5	1008/21	QF 40X20	3,5	1008/36
QF 32	3,5	1008/14	QF 50X25	3,5	900/18
QF 36	3,5	504/18			
QF 40	3,5	504/12			
QF 45	3,5	500/10			
QF 50	3,5	400/8			
QF 60	3,5	400/8			

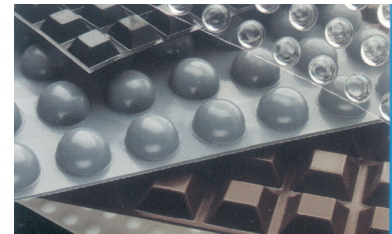
DB - SELVKLEBENDE ELASTISK BUMPER

	Ø	Høyde	Antall Kartong/plate
DB 3006	6,4	1,9	10098 / 561
DB 3008	8,0	2,2	10192 / 392
DB 3079	7,9	2,5	10150 / 406
DB 3010	10,0	3,1	10080 / 288
DB 3115	11,1	5,0	5082 / 242
DB 3150	16,0	7,9	3072 / 128
DB 3190	19,0	9,5	2058 / 98

DB 3100	10,0 X 10,0	2,5	10304 / 448
DB 3127	12,7 X 12,7	3,1	10080 / 288
DB 3126	12,6 X 12,6	5,7	5184 / 288
DB 3205	20,5 X 20,5	7,5	2576 / 112

DB 3075	7,5	3,0	10080 / 336
DB 3120	10,1	1,8	10080 / 288
DB 3122	12,7	1,8	10000 / 200
DB 3125	12,7	3,5	10000 / 200
DB 3014	14,0	4,5	5120 / 128
DB 3191	19,0	1,9	5040 / 84
DB 3204	19,7	3,0	4032 / 84
DB 3024	19,0	4,0	5040 / 112
DB 3019	19,0	6,0	3024 / 84
DB 3020	20,0	6,2	3024 / 112
DB 3210	22,3	10,1	1008 / 72

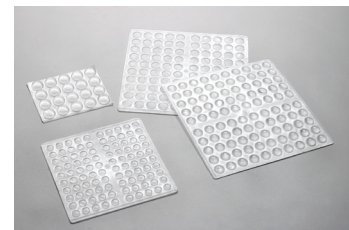
- Materiale PUR
- Standard farve klar og sort (hvit, grå eller brun på forespørsel)
- Minste antall som leveres er 1 stk. plate



UP - SELVKLEBENDE BUMPER

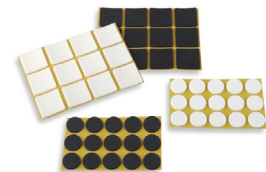
	Ø	Høyde	Antall Kartong/plate
UP	7	1,5	10.000 / 100
UP	8	1,6	10.000 / 100
UP	10	1,5	10.000 / 100
UP	10	3,0	5000 / 100
UP	13	4,0	4000 / 80

- Materiale EVA
- Standard farve natur
- Minste antall som leveres er 1 stk. plate



YP - SELVKLEBENDE BUMPER ANTISIKLI

	Ø	Høyde	Antall Kartong/plate
YP	20	2,5	1000 / 50
YP	40	2,5	504 / 12
YP 30x30		2,5	1008 / 21



BSK - SELVKLEBENDE AVDEKNING

	Ø	Høyde	Antall Kartong
BSK	13	0,45	2000
BSK	20	0,45	900

- Materiale ABS
- Selvklebende avdekning for hull
- Standardfarger hvit, grå, sort, eik, furu, ask, bok, valnøtt, kirsebær, mahogny og RAL 9006
- Andre farger på forespørsel



JXM - MØBELBEN M/TRAPEZGJENGER



- Materiale ABS
- Standardfarve sort

Rør Ø	Fot Ø	Høyde innskrudd	Total lengde	Justering lengde
JXM 50X1,5	60	20	213	120
JXM 50X2,0	60	20	213	120
JXM 55X1,5	60	20	213	120
JXM 55X2,0	60	20	213	120
JXM 60X1,5	70	20	213	120
JXM 60X2,0	70	20	213	120

JXF - MØBELBEN M/TRAPEZGJENGER



- Materiale PA/GF
- Standardfarve sort

Rør Ø	Fot Ø	Høyde innskrudd	Total lengde	Justering lengde
STOR FOT:				
JXF 40X1,5 S	68	20	283	170
JXF 40X2,0 S	68	20	283	170
JXF 42X1,5 S	68	20	283	170
JXF 42X2,0 S	68	20	283	170
LITEN FOT:				
JXF 38X1,5 L	38	15	260	100
JXF 38X2,0 L	38	15	260	100
JXF 40X1,5 L	40	20	283	170
JXF 40X2,0 L	40	20	283	170
JXF 42X1,5 L	40	20	283	170
JXF 42X2,0 L	40	20	283	170

JXB - MØBELBEN M/KULEFOT OG TRAPEZGJENGER



- Materiale PA/GF
- Standardfarve sort
- Justervinkel 0-40°

Rør Ø	Fot Ø	Høyde innskrudd	Total lengde	Justering lengde
JXB 40X1,5	68	34	270	170
JXB 40X2,0	68	34	270	170
JXB 42X1,5	68	34	270	170
JXB 42X2,0	68	34	270	170

JXQ - MØBELBEN M/TRAPEZGJENGER FOR KVADRATRØR



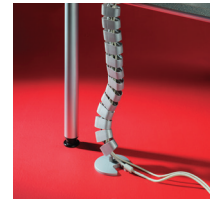
- Materiale ABS
- Standard farve sort

Rør	Fot Ø	Høyde innskrudd	Total lengde	Justering lengde
JXQ 40X40X2 S	68	20	283	170
JXQ 40X40X2 L	40	20	283	170
JXQ 50X50X1,5	40	20	283	170
JXQ 50X50X2	40	20	283	170
JXQ 60X60X2	70	20	213	120

KABA - KABELFØRING VERTIKAL

	Antall elementer	Lengde element	Total lengde	Bordfeste og fot + mm
KABA 15X50-4	15	50	750	72
KABA 24X50-4	24	50	1200	72
KABA 15X50-8	15	50	750	72
KABA 24X50-8	24	50	1200	72

- Holder orden på ledninger og kabel på arbeidsplassen
- Materiale PP, farge sort, natur, alu (RAL 9006)
- Leveres i esker komplett for 4 eller 8 kabler, m/skruer.



KEBA - KABELFØRING VERTIKAL

	Antall elementer	Lengde element	Total lengde	Bordfeste og fot + mm
KEBA 25X30	25	30	750	65
KEBA 40X30	40	30	1200	65

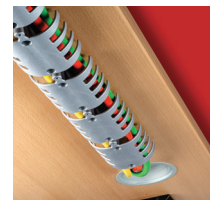
- Holder orden på ledninger og kabel på arbeidsplassen
- Materiale PP, farge sort, natur, alu (RAL 9006)
- Leveres i esker komplett for 4 eller 8 kabler, m/skruer.



KAHA - KABELFØRING HORIZONTAL

	Antall elementer	Lengde element	Total lengde
KAHA 10	10	100	1000
KAHA 14	14	100	1400
KAHA 16	16	100	1600
KAHA 18	18	100	1800

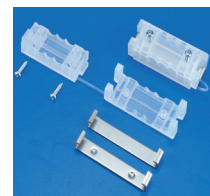
- Holder orden på ledninger og kabel på arbeidsplassen
- Materiale PP, farge sort, natur, alu (RAL 9006)
- Leveres i esker komplett m/skruer.



ZE - KABELSTREKKAVALASTER

	Lengde	Bredde	Høyde	Avstand festepunkt
ZE 60X22TS	60	22	18	32
ZE 60X22US	60	22	18	18
ZE 60X22MS	60	22	18	32

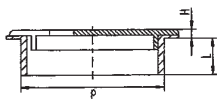
- Hindrer brudd på ledninger
- Materiale PP farge sort, natur
- Leveres i tre varianter
- M/treskruer
- Sveiseklammer u/sveisepunkter,
- Sveiseklammer m/to sveisepunkter



KD - KABELGJENNOMFØRING



- Leveres i farven sort [standard]
- Kan leveres i farvene hvit/grå/beige



	Krave Ø	Krave høyde	Skaft lengde	Skaft Ø
KD 39	45	3	16	39
KD 45	51	3	16	45
KD 49	60	3	15	49
KD 60	66	2	20	60
KD 80	88	2	20	80

KDM - KABELGJENNOMFØRING ZINK



- Materiale zink
- Med nylonbørster
- Farge rustfritt eller krom

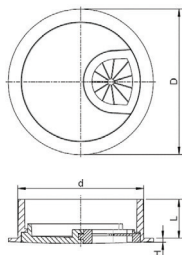


	Krave Ø	Krave høyde	Skaft lengde	Skaft Ø
KDM 59	66	1,3	22	59,0+1
KDM 79	88	1,3	22	79,0+1

KDB - KABELGJENNOMFØRING ZINK



- Materiale zink
- Farge rustfritt eller krom



	Krave Ø	Krave høyde	Skaft lengde	Skaft Ø
KDB 58,6	68	1,7	18	58,6
KDB 78,3	90	1,7	13	78,3

KDC - KABELGJENNOMFØRING



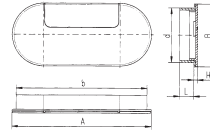
- Leveres i fargene svart, hvit, grå
- Materiale ABS

	Krave Ø	Krave høyde	Skaft lengde	x
KDC60	71,5	3,0	21	60
KDC80	94,5	3,0	21	80

KDO - KABELGJENNOMFØRING

Krave AxB	Krave høyde	Skaft lengde	Skaft AxB
KD0175X64	3,9	17	164,5x55,5

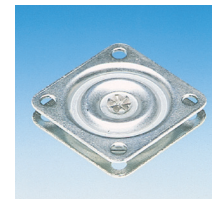
- Leveres i farven sort (standard)
- Kan leveres i farvene hvit/grå/beige



DREIESKIVE

		H
Dreieskive	57x 57	11
Dreieskive	170x170	27

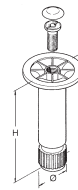
- Materiale presset stålplate
- Enkel kulebane
- Egnet til TV, bord, barkrakker + alt som skal rotere



380 DISKBEN

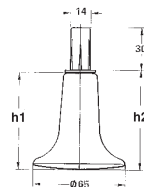
	Sokkelhøyde
380-100	100
380-150	150
380-200	200

- Forkrommet stålør
- Stillfoten i kunststoff
- Justerbar høyde 20 mm
- Leveres med M10 skruer og kunststoffkappe



GSØ65 MØBELFOT

- Forkrommet zink
- Glideflate av nylon Ø65
- Bestillingsvare, kan leveres i forskjellige høyder og fester



GS050 MØBELFOT

Ø	H	Tapp Ø
GSØ 50x35	B10-10	
GSØ 50x35	B10-11	
xxx		

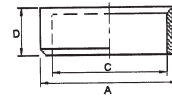
- Sort nylon
- Spesielt for kontorstoler
- Lagerføres som avbildet
- Andre fester og størrelser kan leveres



LBU - GLIDELAGER U/KRAGE

A	C	D	A	C	D	A	C	D	A	C	D
LBU 12	8	10	LBU 22	15	15	LBU 30	25	32	LBU 40	32	30
LBU 12	10	10	LBU 22	16	15	LBU 32	25	20	LBU 45	40	40
LBU 14	8	10	LBU 24	16	15	LBU 32	28	20	LBU 48	40	40
LBU 14	10	10	LBU 24	20	15	LBU 35	25	20	LBU 50	40	40
LBU 14	12	10	LBU 25	15	15	LBU 35	28	20	LBU 56	50	50
LBU 16	10	10	LBU 25	20	15	LBU 35	30	20	LBU 60	50	50
LBU 16	12	10	LBU 26	20	20	LBU 36	30	30	LBU 54	62	60
LBU 18	12	14	LBU 28	20	20	LBU 36	32	30			
LBU 20	15	15	LBU 30	20	20	LBU 38	28	19			
LBU 20	16	15	LBU 30	25	20	LBU 40	30	30			

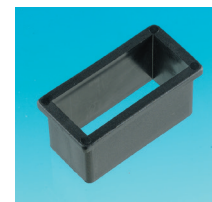
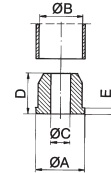
- Glidelager u/krave
- Materiale PA



LB - GLIDEFORING FIRKANT

A	B	C	D	E
LB35x35x1,5	32x32	25x25	28	3
LB50x50x1,5	47x47	40x40	30	4
LB50x30x1,5	47x27	40x20	28	3
LB60x30x1,5	57x27	50x20	28	3

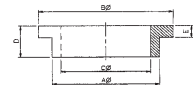
- Materiale PE
- Standardfarve sort



TI - ISOLASJONSHYLSER

B	A	C	D	E
TI 5,1	3,5	1,6 2,1 2,4 2,6 2,8	2,0	0,8
TI 5,2	2,9	1,6 2,1	3,0	1,0
TI 5,2	3,2	1,6 2,1 2,4	3,0	1,0
TI 6,0	3,3	1,6 2,1 2,4 2,6	3,0	1,0
TI 6,1	3,5	2,1 2,4 2,6 2,8	2,0	0,8
TI 6,1	3,8	2,1 2,4 2,6 2,8 3,1	2,0	0,8
TI 6,2	4,0	2,1 2,4 2,6 3,1	3,0	1,3
TI 6,3	2,9	1,6 2,1	3,0	1,0
TI 7,4	4,3	2,1 2,4 2,6 2,8 3,1 3,6	3,0	1,3
TI 7,9	4,7	2,1 2,4 2,6 2,8 3,1 3,6	3,0	1,3
TI 8,2	6,0	3,1 3,6 4,2 5,2	3,0	1,3
TI 9,5	6,3	3,1 3,6 4,2 5,2	3,0	1,3
TI10	3,9	2,1 2,4 2,6 2,8 3,1	2,0	0,8
TI10	4,9	2,1 2,4 2,6 2,8 3,1 3,6 4,2	3,0	1,3
TI10	5,5	2,1 2,4 2,6 2,8 3,1 3,6 4,2	3,0	1,3
TI10	5,9	2,1 2,4 2,6 2,8 3,1 3,6 4,2 5,2	3,0	1,3
TI13	6,3	3,1 3,6 4,2 5,2	3,0	1,3
TI15	6,0	5,1	9,4	3,2
TI15	6,9	3,1 3,6 4,2 5,2 6,2	3,5	1,5
TI15	7,9	3,1 3,6 4,2 5,2 6,2	3,5	1,5
TI15	8,9	3,1 3,6 4,2 5,2 6,2 8,2	3,5	1,5
TI15	9,9	3,1 3,6 4,2 5,2 6,2 8,2	3,5	1,5
TI18	10,4	8,2	5,0	1,0
TI18	10,9	3,1 3,6 4,2 5,2 6,2 8,2 10,2	4,0	1,5
TI18	11,9	4,2 5,2 6,2 8,2 10,2	4,0	1,5
TI19	12,9	10,2	4,0	1,5
TI21	12,5	10,2	4,0	1,5
TI23	19,0	16,2	25,0	1,0
TI24	15,0	12,2	5,0	1,0
TI25	13,8	12,2	4,0	2,0
TI25	14,8	12,2	4,0	2,0
TI25	15,8	12,2 14,2	4,0	2,0
TI25	17,8	12,2 14,2 16,2	4,0	2,0

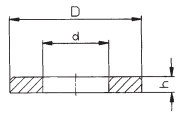
- Materiale PA
- Standard farve natur



TU - UNDERLAGSKIVER "DIN 125"



- Materiale PA
- Standard farve natur



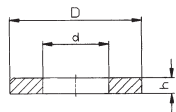
D	h	d	For bolt
TU 6	0,5	2,5	M 2,3
TU 6	0,5	2,7	M 2,5
TU 7	0,5	2,8	M 2,6
TU 7	0,5	3,2	M 3
TU 8	0,5	3,7	M 3,5
TU 8	1,5	3,2	M 3
TU 8	1,5	4,3	M 4
TU 9	0,8	4,3	M 4
TU 10	1,0	5,3	M 5
TU 12	1,5	5,4	M 5
TU 12	1,5	6,5	M 6
TU 12	1,6	6,4	M 6
TU 14	1,6	7,4	M 7
TU 17	1,6	8,4	M 8
TU 17	2,0	8,6	M 8
TU 20	2,0	10,5	M 10

D	h	d	For bolt
TU 21	2,5	10,6	M 10
TU 24	2,5	13,0	M 12
TU 28	2,5	15,0	M 14
TU 30	3,0	17,0	M 16
TU 37	3,0	21,0	M 20
TU 39	3,0	23,0	M 22
TU 44	4,0	25,0	M 24
TU 50	4,0	27,0	M 26
TU 50	4,0	28,0	M 28
TU 60	5,0	33,0	M 32
TU 60	5,0	34,0	M 33
TU 66	5,0	37,0	M 36
TU 72	6,0	39,0	M 38
TU 72	6,0	40,0	M 39
TU 72	6,0	41,0	M 40

TU - UNDERLAGSKIVER "DIN 9021"



- Materiale PA
- Standard farve natur

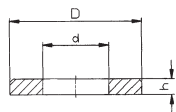


D	h	d	For bolt
TU 8	0,8	2,7	M 2,5
TU 9	0,8	3,2	M 3
TU 11	0,8	3,7	M 3,5
TU 12	1,0	4,3	M 4
TU 15	1,2	5,3	M 5
TU 18	1,6	6,4	M 6
TU 22	1,6	7,4	M 7
TU 24	2,0	8,4	M 8
TU 30	2,5	10,5	M 10
TU 37	3,0	13,0	M 12
TU 44	3,0	15,0	M 14
TU 50	3,0	17,0	M 16
TU 56	4,0	20,0	M 18
TU 60	4,0	22,0	M 20

TU - UNDERLAGSKIVER "DIN 433"



- Materiale PA
- Standard farve natur



D	h	d	For bolt
TU 6	0,5	3,2	M 3
TU 7	0,5	3,7	M 3,5
TU 8	0,5	4,3	M 4
TU 9,5	1,0	5,3	M 5
TU 11	1,6	6,4	M 6
TU 15	1,6	8,4	M 8
TU 18	1,6	10,5	M 10
TU 20	2,0	13,0	M 12
TU 24	2,5	15,0	M 14
TU 28	2,5	17,0	M 16
TU 30	2,5	19,0	M 18
TU 34	3,0	21,0	M 20

RK - RØRKOBLINGER

- Rørkoblinger passer for firkant rør
- For sammenføring av firkantør uten sveising

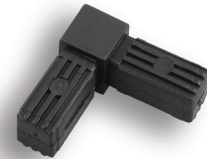
Tapplengde

RK 2R 20x20x1,5	45
RK 2R 20x20x2	44
RK 2R 25x25x1,5	35
RK 2R 25x25x2	35
RK 2R 30x30x1,5	50
RK 2R 30x30x2	50



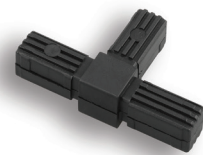
Tapplengde

RK 2V 20x20x1,5	36
RK 2V 25x25x1,5	52
RK 2V 30x30x2,0	47



Tapplengde

RK 3R 20x20x1,5	36
RK 3R 25x25x1,5	52
RK 3R 30x30x2,0	47



Tapplengde

RK 4R 20x20x1,5	36
RK 4R 25x25x1,5	52
RK 4R 30x30x2,0	47



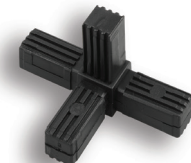
Tapplengde

RK 3V 20x20x1,5	36
RK 3V 25x25x1,5	52
RK 3V 30x30x2,0	47



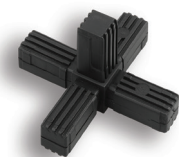
Tapplengde

RK 4V 20x20x1,5	36
RK 4V 25x25x1,5	52
RK 4V 30x30x2,0	47



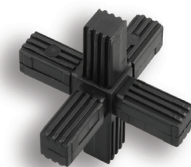
Tapplengde

RK 5V 20x20x1,5	36
RK 5V 25x25x1,5	52
RK 5V 30x30x2,0	47



Tapplengde

RK 6V 20x20x1,5	36
RK 6V 25x25x1,5	52
RK 6V 30x30x2,0	47



RK - RØRKOBLINGER INNSTILLBARE



	Tapplengde	Vinkel
RK 2RV 20x20x1,5	35	0-220°
RK 2RV 25x25x1,5	38	45-195°
RK 2RV 25x25x1,5	39	0-190°
RK 2RV 25x25x1,5	50	60-300°
RK 2RV 30x30x2	41	45-200°

- Rørkoblinger passer for firkant rør
- For sammenføring av firkantør uten sveising
- Justerbar vinkel



	Tapplengde	Vinkel
RK 3RV 20x20x1,5	35	0-220°
RK 3RV 25x25x1,5	38	45-195°
RK 3RV 25x25x1,5	39	0-190°
RK 3RV 25x25x1,5	50	60-300°
RK 3RV 30x30x2	41	45-200°



	Tapplengde	Vinkel
RK 4RV 20x20x1,5	42	0-220°
RK 4RV 25x25x1,5	43	45-195°
RK 4RV 25x25x1,5	43	0-190°
RK 4RV 25x25x1,5	50	60-300°
RK 4RV 30x30x2	41	45-200°

RKA - RØRKOBLINGER FOR RUNDE RØR "KNELEDD"



- Materiale PA6,6
- Standardfarge sort
- Trinnløs låsbar

Tapplengde

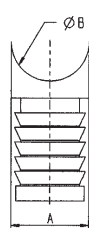
RKA 16
RKA 18
RKA 19
RKA 20
RKA 22

RKA 25
RKA 28
RKA 25x30 Oval

TRK - RØRKOBLINGER FOR RUNDE RØR M/RADIE



- Materiale PA
- Standard farve sort

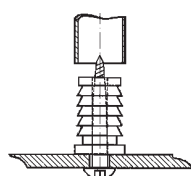


A	B	A	B
TRK 16x1,0	16-19	TRK 19x1,5	22-25
TRK 16x1,0	22-25	TRK 19x1,5	28-32
TRK 16x1,0	28-32	TRK 22x1,0	22-25
TRK 16x1,5	16-19	TRK 22x1,25	22-25
TRK 16x1,5	22-25	TRK 22x1,25	28-32
TRK 16x1,5	28-32	TRK 22x1,5	22-25
TRK 19x1,0	19	TRK 22x1,5	28-32
TRK 19x1,0	22-25	TRK 25x1,5	25
TRK 19x1,0	28-32	TRK 25x1,5	28-32
TRK 19x1,5	19	TRK 32x1,5	32

TRP - RØRKOBLINGER FOR RUNDE RØR



- Materiale PA
- Standard farve sort

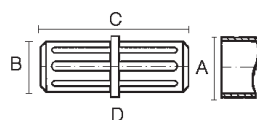


A	A
TRP 16x1,0	TRK 22x1,5
TRP 16x1,5	TRK 25x1,5
TRP 19x1,0	TRK 32x1,5
TRP 19x1,5	
TRP 22x1,0	
TRP 22x1,25	

TKB - KOBLINGSBESLAG FOR RUNDE RØR

A	B	C	D	A	B	C	D
TKB 19/	16,0/	43/	3	TKB 25/	22,0/	124/	3
TKB 19/	17,0/	43/	3	TKB 25/	23,0/	124/	3
TKB 20/	18,0/	43/	3	TKB 25/	25,0/	124/	3
TKB 22/	19,0/	87/	3	TKB 32/	29,0/	65/	3
TKB 22/	19,5/	87/	3	TKB 32/	29,0/	124/	3

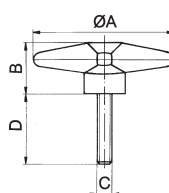
- Materiale PA
- Standard farve sort



RS - LÅSERATT M/SKRUE

ØA	C	D (Lengde)				B	E			
RS Ø25 / M 6 /		11	15	20	25	35	45	16	16	
RS Ø25 / M 8 /			15	20	30			16	16	
RS Ø40 / M 6 /		11	15	20	25	35	45	17	16	
RS Ø40 / M 8 /	6	10	12	15	20	25	30	40	17	16
RS Ø60 / M 8 /	6	10	12	15	20	25	30	40	23	18
RS Ø60 / M10 /			15	20	30	40	50	23	18	

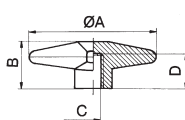
- Materiale PA, farve standard sort
- Skruer el. forzinket innstøp
- Andre lengder og dimensjoner kan leveres
- Kan leveres m/rustfri skruer



RB - LÅSERATT M/SKRUE

ØA	C	D (Dybde)		B	E
RB Ø25 / M 8 /		8		16	16
RB Ø40 / M 6 /		9		17	
RB Ø40 / M 8 /		9		17	16
RB Ø60 / M 6 /		12		23	18
RB Ø60 / M 8 /		11		23	18
RB Ø60 / M10 /		11		23	18

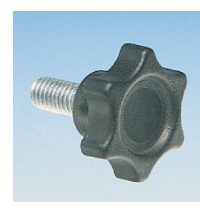
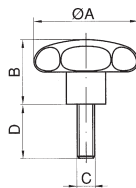
- Materiale PA, farve standard sort
- Innstøp messingmutter



HS 23 - LÅSERATT M/SKRUE

ØA	C	D (Lengde)				B	E	
HS Ø23 / M 4 /		4	7	9	13	17	13	12,5
HS Ø23 / M 5 /				9	13	17	13	12,5
HS Ø23 / M 6 /				9	13	17	13	12,5

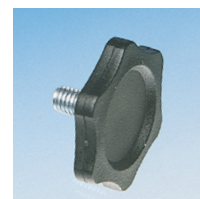
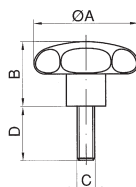
- Materiale PA, farve standard sort
- Innstøpt el. forzinket skruer



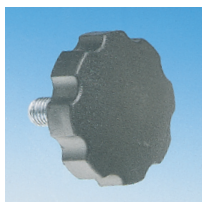
HS 35 - LÅSERATT M/SKRUE

ØA	C	D (Lengde)				B	E			
HS Ø35 / M 5 /		9	13	17	22	27	37	47	9	11
HS Ø35 / M 6 /		9	13	17	22	27	37	47	9	12
HS Ø35 / M 8 /		12	16	21	26	36	46	9	18	

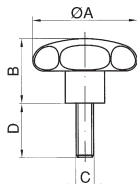
- Materiale PA, farve standard sort
- Skruer el. forzinket innstøp
- Andre lengder og dimensjoner kan leveres
- Kan leveres m/rustfri skruer



HS 30/40/50 - LÅSERATT M/SKRUE



- Materiale PA, farve standard sort
- Skruer el. forzinket innstøpt
- Andre lengder og dimensjoner kan leveres
- Kan leveres m/rustfri skruer

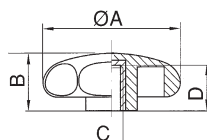


ØA	C	D [Lengde]	B	E
HS Ø30 / M 6 /	12	17 22	18,5	13,5
HS Ø30 / M 8 /		20	18,5	13,5
HS Ø40 / M 8 /		20	18,5	16
HS Ø40 / M10 /		20	18,5	16
HS Ø50 / M 8 /		20		
HS Ø50 / M10 /	20	25 30	23,5	18

HB 30/40/50 - LÅSERATT M/MUTTER



- Materiale på farve standard sort
- Innstøpt messingmutter

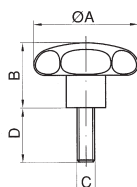


ØA	C [gjenge]	D [dybde]	B	h2	d2
HB Ø30	M 6	11	18,5	8,0	13,5
HB Ø30	M 8	14	18,5	8,0	13,5
HB Ø40	M 6	11	18,5	6,5	16,0
HB Ø40	M 8	14	18,5	6,5	16,0
HB Ø40	M 8	20	26,0	15,0	16,0
HB Ø50	M 8	14	23,5	10,0	18,0
HB Ø50	M10	16	23,5	10,0	18,0

HS 60 - LÅSERATT M/SKRUE



- Materiale PA, farve standard sort
- Skruer el. forzinket innstøpt
- Andre lengder og dimensjoner kan leveres
- Kan leveres m/rustfri skruer

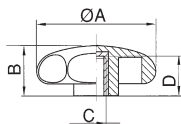


ØA	C	D [Lengde]	B	E
HS Ø60 / M 8 /	15	20 25 35 45	34	24
HS Ø60 / M10 /	11	20 25 35 45 55 65 75 95	34	24

HB 60 - LÅSERATT M/MUTTER



- Materiale på farve standard sort
- Innstøpt messingmutter

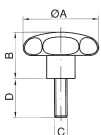


ØA	C [gjenge]	D [dybde]	B	h2	d2
HB Ø60	M 8	19	34	16	24
HB Ø60	M10	16	34	16	24

HS 80 - LÅSERATT M/SKRUE



- Materiale PA, farve standard sort
- Skruer el. forzinket innstøpt
- Andre lengder og dimensjoner kan leveres
- Kan leveres m/rustfri skruer

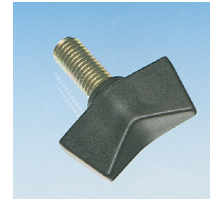
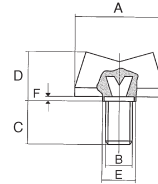


ØA	C	D [Lengde]	B	E
HS Ø80 / M12 /	20	40 60	35	25
HS Ø80 / M16 /	20	40 60	35	25

VS 28/33 - VINGESKRUER

	A	B	C	D	E	F	
VS 28 M 6x	10	12	15	20	15	11	1
VS 33 M 8x				20	20	13	3

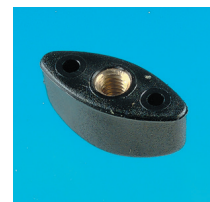
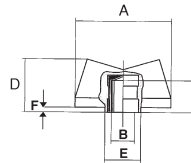
- Materiale PA, farge standard sort
- Skruer el. forzinket innstøpt
- Andre lengder og dimensjoner kan leveres
- Kan leveres m/rustfri skruer



VB 28/33 - VINGEMUTTER

	A	B	D	E	F
VB 28 M 4	15	11	1		
VB 28 M 5	15	11	1		
VB 33 M 6	20	13	3		
VB 33 M 8	20	13	3		

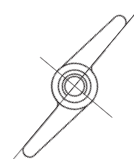
- Materiale PA, farge standard sort
- Mutter el. forzinket innstøpt



VS 70 - VINGESKRUE

	A	B	C	D	E	F
VS 70 M 8x	15	20	30	14	9	

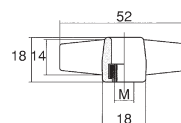
- Materiale PA, farge standard sort
- Skruer el. forzinket innstøpt
- Andre lengder og dimensjoner kan leveres
- Kan leveres m/rustfri skruer



VB 52/70 - VINGEMUTTER

	A	B	D	E	F
VB 52 M 6	19	4			
VB 52 M 8	19	4			
VB 70 M 6	25	9			
VB 70 M 8	25	9			
VB 70 M10	25	9			

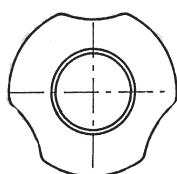
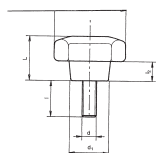
- Materiale PA, farge standard sort
- Mutter el. forzinket innstøpt



HBS - M/INNSTØPT SKRUE



- Materiale PA m/glassfiber. Innstøpt skruer elforzinket
- Gnistet overflate
- Bestillingsvare



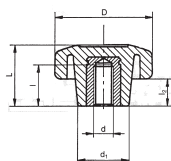
D / d / LENGDE

D / d / LENGDE	L	l2	d1
HBS 20 M 4X	10 15 20	13	5 13
HBS 20 M 5X	10 15 20 25	13	5 13
HBS 20 M 6X	10 15 20 25	13	5 13
HBS 25 M 4X	10 15 20	16	6 14
HBS 25 M 5X	10 15 20 25	16	6 14
HBS 25 M 6X	10 15 20 25	16	6 14
HBS 30 M 5X	10 15 20 25 30 40	19	7 17
HBS 30 M 6X	10 15 20 25 30 40 50	19	7 17
HBS 30 M 8X	10 15 20 25 30 40 50	19	7 17
HBS 30 M10X	20 25 30 40 50	19	17
HBS 40 M 6X	10 15 20 25 30 40 50	25	11 21
HBS 40 M 8X	10 15 20 25 30 40 50	25	11 21
HBS 40 M10X	20 25 30 40 50	25	11 21
HBS 50 M 8X	15 20 25 30 40 50 60	30	13 24
HBS 50 M10X	20 25 30 40 50 60	30	13 24
HBS 50 M12X	25 30 40 50 60	30	13 24
HBS 60 M 8X	15 20 25 30 40 50 60	38	17 28
HBS 60 M10X	20 25 30 40 50	38	17 28
HBS 60 M12X	25 30 40 50 60 70	30	13 24
HBS 60 M14X	25 30 40 50 60 70	38	17 28

HBB - M/INNSTØPT MUTTER



- Materiale PA m/glassfiber
- Innstøpt skruer elforzinket
- Gnistet overflate
- Bestillingsvare

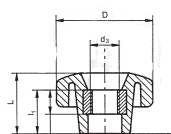


Ø	GJENGE	l [Dybde]	L	l2	d1
HBB Ø20 /	M4/M5/M6	9	13	5	13
HBB Ø25 /	M4/M5/M6/M8	9	16	6	14
HBB Ø30 /	M5/M6/M8/M10	11	19	7	17
HBB Ø40 /	M6/M8/M10	16	25	11	21
HBB Ø50 /	M6/M8/M10/M12	18	30	13	24
HBB Ø60 /	M8/M10/M12/M14	25	38	17	28

HBG - M/GJENNOMGÅENDE GJENGE



- Materiale PA m/glassfiber. Innstøpt skruer elforzinket
- Gnistet overflate
- Bestillingsvare

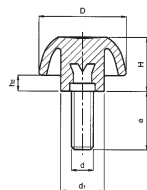


Ø	GJENGE	l [Dybde]	L	l2	d1
HBG Ø20 /	M4/M5/M6	4	13	5	13
HBG Ø25 /	M4/M5/M6	5	16	6	14
HBG Ø30 /	M5/M6/M8/M10	5	19	7	17
HBG Ø40 /	M6/M8/M10	6	25	11	21
HBG Ø50 /	M6/M8/M10/M12	7	30	13	24
HBG Ø60 /	M8/M10/M12/M14	9	38	17	28

HDS - LÅSERATT M/SKRUE



- Materiale PA innstøpt skruer elforzinket
- Gnistet overflate
- Bestillingsvare

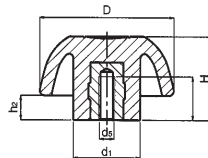


ØD	LENGDE	H	d1	h2
HDS Ø25 M 5 x	18	16	13	5
HDS Ø25 M 6 x	20	16	13	5
HDS Ø32 M 6 x	10 20 30	20	15	6
HDS Ø32 M 8 x	27	20	15	6
HDS Ø40 M 6 x	15 20 30 40	25	16	8
HDS Ø40 M 8 x	20 33 47	25	16	8
HDS Ø40 M10x	20 33 44	25	16	8
HDS Ø50 M 8 x	15 27 40	31	21	9
HDS Ø50 M10x	33 50	31	21	9
HDS Ø63 M10x	33	39	26	12
HDS Ø63 M12x	40	39	26	12

HDB - LÅSERATT M/MUTTER

ØD	DYBDE	H	d1	h2
HDB 025 M 4 x 8		16	13	5
HDB 026 M 5 x 9		16	13	5
HDB 027 M 6 x 10		16	13	5
HDB 032 M 5 x 9		20	15	6
HDB 032 M 6 x 10		20	15	6
HDB 040 M 6 x 10		25	16	8
HDB 041 M 8 x 14		25	16	8
HDB 042 M10 x 17		25	16	8
HDB 050 M 8 x 14		31	21	9
HDB 050 M10 x 17		31	21	9
HDB 063 M10 x 17		39	26	12
HDB 063 M12 x 19		39	26	12

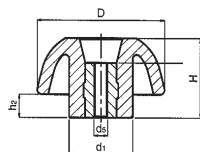
- Materiale PA innstøpt mutter elforzinket
- Gnistet overflate
- Bestillingsvare



HDG - LÅSERATT M/GJENNOMGÅENDE GJENGE

ØD	LENGDE	H	d1	h2
HDG 025 M 6 x 11		16	13	5
HDG 032 M 6 x 14		20	15	6
HDG 040 M 6 x 14		25	16	8
HDG 040 M 8 x 14		25	16	8
HDG 040 M10x 14		25	16	8
HDG 050 M 8 x 14		31	21	9
HDG 050 M10x 14		31	21	9
HDG 063 M10x 23		39	26	12
HDG 063 M12x 23		39	26	12

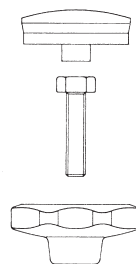
- Materiale PA innstøpt mutter elforzinket
- Gnistet overflate
- Bestillingsvare



HSD - LÅSERATT UMONTERT MODELL

ØA	NV	Gjenge	B	C
HSD 040 SW11		M 6	26	18
HSD 040 SW13		M 8	26	18
HSD 050 SW11		M 6	34	18
HSD 050 SW13		M 8	34	18
HSD 050 SW17		M10	34	23
HSD 063 SW13		M 8	40	23
HSD 063 SW17		M10	40	23
HSD 080 SW19		M12	52	25

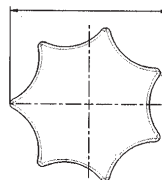
- Todelt modell, umontert, for montering av sekskantbolt eller sekskantmutter



HRS - LÅSERATT M/SKRUE

ØA	LENGDE	B	C	D
HRS 025 M 5 x 10 15 20 25 30 40 50		16	13	8
HRS 025 M 6 x 15 20 25 30 45 50		16	13	8
HRS 030 M 5 x 10 15 20 25 30 45		20	15	9
HRS 030 M 6 x 10 15 20 25 30 35 40 50 70		20	15	9
HRS 030 M 8 x 15 30 35 50 60		20	15	9
HRS 040 M 6 x 15 20 25 30 35 40 50		23	16	10
HRS 040 M 8 x 10 15 20 25 30 40 45 50 60		23	16	10
HRS 050 M 6 x 15 20 25 30 35 40 45 50 60		32	20	17
HRS 050 M 8 x 10 15 20 25 30 35 40 45 50 60		32	20	17
HRS 050 M10x 15 20 25 30 35 40 50 65 80		32	20	17
HRS 060 M 8 x 15 25 30 45		40	24	19
HRS 060 M10x 15 20 25 30 50		40	24	19
HRS 060 M12x 15 25 30 35 40 45 50		40	24	19
HRS 080 M 8 x 15		48	30	23

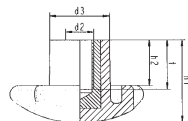
- Materiale PA innstøpt skrue elforzinket
- Blank polert overflate
- Bestillingsvare



HRB - LÅSERATT M/MUTTER



- Materiale PA innstøpt mutter elforzinket
- Blank polert overflate
- Bestillingsvare



ØA		DYBDE	B	C	D
HRB Ø25	M 4	x 11	16	13	8
HRB Ø25	M 5	x 11	16	13	8
HRB Ø30	M 5	x 14	20	15	9
HRB Ø30	M 6	x 14	20	15	9
HRB Ø30	M 8	x 14	20	15	9
HRB Ø40	M 6	x 17	23	16	10
HRB Ø40	M 8	x 17	23	16	10
HRB Ø50	M 8	x 25	32	20	17
HRB Ø50	M10	x 25	32	20	17
HRB Ø60	M 8	x 32	40	24	19
HRB Ø60	M10	x 32	40	24	19
HRB Ø60	M12	x 32	40	24	19
HRB Ø80	M10	x 32	48	30	23
HRB Ø80	M12	x 32	48	30	23
HRB Ø80	M16	x 32	48	30	23

HS/Ø14 - POLSKRUE



- Materiale PP innstøpt skrue elforzinket
- M/skrutrekkespor



ØA		LENGDE	B
HS Ø14	M 4	x 7 12 20	12
HS Ø14	M 5	x 12 20 30	12
HS Ø14	M 6	x 12 20 30	12

HS/Ø14 - POLMUTTER



- Materiale PP innstøpt mutter elforzinket
- Gjennomgående gjenger

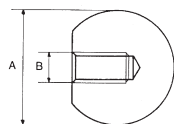


ØA		DYBDE	B
HB Ø14	M 5	x 10	17
HB Ø14	M 6	x 10	17

S - KULEHÅNDTAK



- Materiale termoplast
- Standard farve sort
- Alle mål oppgitt i mm

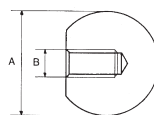


A	/	B (Gjenge)
S16 M	/	4 5
S20 M	/	4 5 6 8
S25 M	/	4 5 6 8 10
S30 M	/	5 6 8 10
S35 M	/	6 8 10
S40 M	/	8 10 12
S45 M	/	10
S50 M	/	8 10 12 16
S60 M	/	8 10 12 16

S/PA - KULEHÅNDTAK

A	/	B [Gjenge]					
S20 Ø	/	3,5	5	6	8	10	
S25 Ø	/	3,5		6	8	10	
S32 Ø	/	3,5	5	6	8	10	12
S35 Ø	/						19
S40 Ø	/		5	6	8	10	12 16
S50 Ø	/						22

- Materiale PA innstøpt mutter elforzinket
- Gnistet overflate
- Bestillingsvare



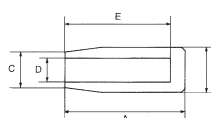
Serie S/SPA
Begge leveres i farver, krom, gull eller sølv. Kan også preges med f.eks. logo.



HR - SPAKHÅNDTAK

Presspassning	B	A	D	Gjenge	B	A	D
HR Ø15x40 Ø 8	15	40	8	HR Ø13x 30 M 5	13	30	5
HR Ø21x50 Ø 8	21	50	8	HR Ø20x 45 M 6	20	45	6
HR Ø21x50 Ø10	21	50	10	HR Ø24x 53 M 6	24	53	6
HR Ø21x50 Ø12	21	50	12	HR Ø25x 76 M 8	25	76	8
HR Ø22x70 Ø10	22	70	10	HR Ø28x 90 M10	28	90	10
				HR Ø28x 90 M12	28	90	12
				HR Ø28x132 M12	28	132	12

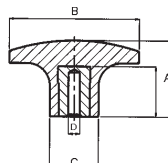
- Materiale PA
- Standard farve sort andre farver kan leveres
- Leveres med presspassning og gjenger



HR - DRAKNOTT

Presspassning	B	A	D	Gjenge	B	A	D
HR Ø17x26 Ø 4	17	26	4	HR Ø30x26 M 6	30	26	6
HR Ø17x26 Ø 5	17	26	5	HR Ø30x26 M 8	30	26	8
HR Ø17x26 Ø 6	17	26	6	HR Ø30x26 M10	30	26	10
HR Ø17x26 Ø 8	17	26	8				
HR Ø30x26 Ø 6	30	26	6				
HR Ø30x26 Ø 8	30	26	8				
HR Ø30x26 Ø 10	30	26	10				

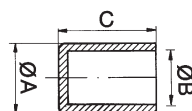
- Materiale PA
- Standard farve sort andre farver kan leveres
- Leveres med presspassning og gjenger



ABH - HÅNDTAK

	A	B	C
ABH Ø16x 80	19	16	80
ABH Ø20x110	30	20	110
ABH Ø22x110	30	22	110
ABH Ø22x140 anatomisk	30	22	140
ABH Ø25x125	30	25	125
ABH Ø32x125	35	32	125

- Materiale sort PVC nuppet overflate, skliskikker
- Andre størrelser og dimensjoner leveres



ABH Ø25-32



ABH Ø20-22

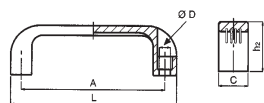


Anatomisk høyre/venstre

BH - BØYLEHÅNDTAK



- Materiale PA6
- Standardfarve sort

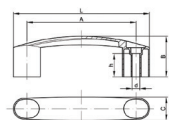


	L	A	L1	Ød	ø	h2	C
BH 107	107	93,5	74	11	6,5	7,8	21
BH 136	117	117	92	11	6,5	8,5	25
BH 152	133	105	14	10	8,5	8	25
BH 197	197	179	153	14	8,5	9	28

HGA - BØYLEHÅNDTAK



- Materiale PA

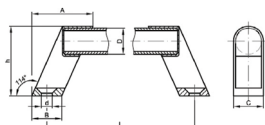


	L	A	ø	h2	C
HGA 116	116	93	6,5	35	20
HGA 141K	141	109	8,5	42	25
HGA 141L	141	117	8,5	42	25
HGA 163	163	132	8,5	45	29
HGA 181	181	150	8,5	48	31

HGB - BØYLEHÅNDTAK



- Materiale PA/aluminium

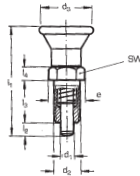


	A	ø	h2	C
HGB 20-200	200	6,4	53	26
HGB 20-300	300	6,4	53	26
HGB 20-400	400	6,4	53	26
HGB 20-500	500	6,4	53	26
HGB 20-700	700	6,4	53	26
HGB 25-200	200	8,4	60	32
HGB 25-300	300	8,4	60	32
HGB 25-400	400	8,4	60	32
HGB 25-500	500	8,4	60	32
HGB 25-700	700	8,4	60	32

ISB - INNSTILLINGSBOLT



- Fjærbelastet innstillingsbolt
- Materiale i brunert stål, draknapp termoplast
- Andre dimensjoner og utførelser kan leveres

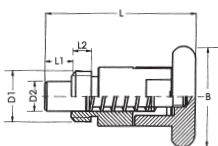


	d ₁	d ₂	d ₃	l ₁	l ₂	l ₃	l ₄	SW
ISB 05	M10x1,0	21	44	5	17	5	13	
ISB 06	M12x1,5	25	53	6	20	6	16	
ISB 08	M16x1,5	31	67	8	26	8	21	

ISS - INNSTILLINGSBOLT



- Fjærbelastet innstillingsbolt
- Materiale i elforzinket stål, draknapp i stål
- Andre dimensjoner og utførelser kan leveres



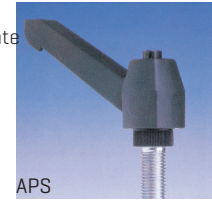
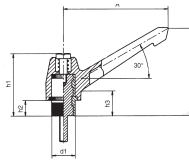
	D1	B	D2	L1	L2	L
ISS 06	M10x1,0	18	6	7,5	4,0	31
ISS 07	M12x1,0	24	7	8,0	6,5	38
ISS 08	M12x1,75	24	7	8,0	8,5	40

APS/APB - STILLBAR LÅSEPAK

GJENGE / LENGDE

						A	H	h1	h2				
APS 40 / M 5 / -	10	20	30			40	38	30	7				
APS 40 / M 6 / -	15	20	25	30		40	38	30	7				
APS 55 / M 6 / -	15	20	25	30	40	50	55	49	37	10			
APS 55 / M 8 / -	15	20	25	30	35	40	45	50	60	55	60		
APS 79 / M 8 / -		20	25	30	35	40	45	50	55	79	68	48	12
APS 79 / M10 / -		20	25	30	35	40	50			79	68	48	12
APS 79 / M12 / -		20	25	30	35	40	50	55	60	79	68	48	12
APS 100 / M12 / -			30	40	50	60	70	100	85	60	12		
APS 100 / M14 / -			30	40	50	60	70	100	85	60	12		
APS 100 / M16 / -			30	40	50	60	70	100	85	60	12		

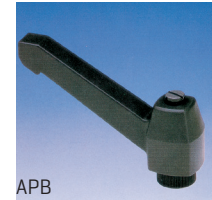
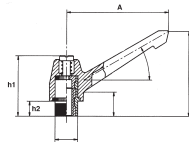
- Materiale PA m/glassfiber
- Standard farve sort gnistet overflate



APS

GJENGE /

						A	H	h1	h2
APB 40 /	M4	M5	M6			40	38	30	7
APB 55 /	M4	M5	M6			55	49	37	10
APB 79 /		M8	M10	M12		79	68	48	12
APB 100 /			M12	M14	M16	100	85	60	12



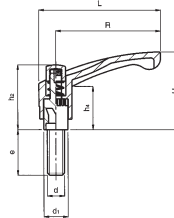
APB

ATS/ATB - STILLBAR LÅSEPAK

Gjenge Lengde

ATS 32/	M 5/	10	16	20										
ATS 32/	M 6/		16	20	25	30	40							
ATS 45/	M 5/	10	16	20										
ATS 45/	M 6/		16	20	25	30	40							
ATS 65/	M 6/		16	20	25	30	40							
ATS 65/	M 8/		16	20	25	30	35	40	50	60				
ATS 80/	M 8/			20	25	30	35	40	50	60				
ATS 80/	M10/				20	25	30	40	50	60				
ATS 80/	M12/					25	30	40	50					
ATS 95/	M12/						25	30	40	50				
ATS 95/	M14/							30	40	50	60			
ATS 95/	M16/								30	40	50	60		
ATS110/	M12/								25	30	40	50		
ATS110/	M14/									30	40	50	60	
ATS110/	M16/										30	40	50	60

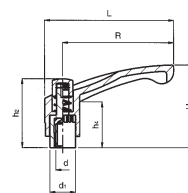
- Materiale PA m/glassfiber
- Standard farve sort, kan leveres orange RAL 2004



ATS

Lengde

ATB 32	M4	M5	M6		
ATB 45	M4	M5	M6		
ATB 65		M6	M8		
ATB 80		M8	M10		
ATB 95			M10	M12	M16
ATB110			M10	M12	M16

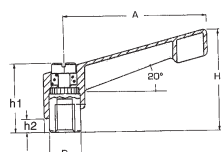
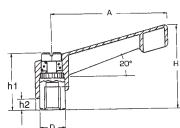


ATB

AZS/AZB - STILLBAR LÅSESPAK ZINK



- Materiale zink
- Standard farve sort eller orange
- Bestillingsvare



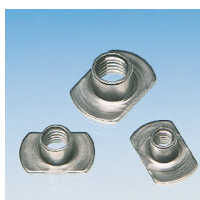
GJENGE / LENGDE

	A	H	h1	h2
AZS 30 / M 5 / -	10 15 20 25 30 35 40		30 25 18	4
AZS 50 / M 6 / -	10 15 20 25 30 35 40 50 60 70 80		50 35 24	6
AZS 70 / M 8 / -	10 15 20 25 30 35 40 50 60 70 80		70 45 30	7
AZS 85 / M10 / -	10 15 20 25 30 35 40 50 60 70 80		85 56 37	9
AZS 100 / M12 / -	10 15 20 25 30 35 40 50 60 70 80		100 66 43	11
AZS 125 / M16 / -	10 15 20 25 30 35 40 50 60 70 80		125 78 55	12

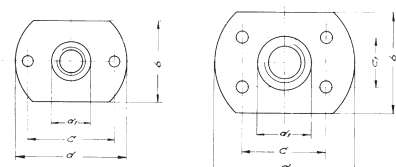
GJENGE /

	A	H	h1	h2
AZB 30 / M 5	30	25	18	4
AZB 50 / M 6	50	35	24	6
AZB 70 / M 8	70	45	30	7
AZB 85 / M10	85	56	37	9
AZB100 / M12	100	66	43	11
AZB125 / M16	125	78	55	12

L100 - SVEISEMUTRE



- Sveisemutre av dytrukket båndstål (DIN 1624)
- Standard ubehandlet, kan leveres galvanisert
- Standard glatt flens uten sveisepunkter
- Leveres med sveisepunkter undersiden serie A, oversiden serie B



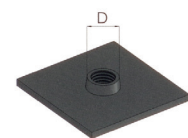
Gjenge

Gjenge	d	b	h	d1	c	c1
L103 M 3	17	9,0	5,0	4,2	12	
L104 M 4	17	9,0	6,0	5,0	12	
L105 M 5	19	11,0	7,5	6,4	14	
L106 M 6	19	11,0	7,5	7,3	14	
L108 M 8	22	14,0	8,5	9,5	16	
L110 M10	26	18,0	10,5	11,9	16	10
L112 M12	29	20,5	12,4	14,5	17	13

L110 - SVEISEMUTRE RUSTFRI



- Sveisemutre av dytrukket rustfritt båndstål



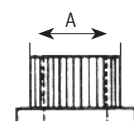
For rør Gjenge

L110 25X25	M10				
L110 30X30	M10	M12			
L110 35X35	M10	M12	M16		
L110 40X40	M10	M12	M16	M20	
L110 45X45		M12	M16	M20	
L110 50X50	M10	M12	M16	M20	M24
L110 60X60			M16	M20	M24
L110 70X70			M16	M20	M24
L110 80X80			M16	M20	M24
L110 100X100			M16	M20	M24

R70 - SVEISEMUTRE



- Sveisemuttre runde dreid av stål
- Standard M10 gjenge
- Utvendig seratert
- Tallet angir utvendig mål på seraterring
- Andre mål og gjengedimensjoner kan leveres



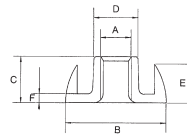
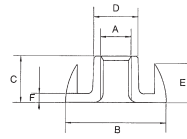
A

R70-13	R70-22
R70-14	R70-25
R70-16	R70-26
R70-17	R70-27
R70-19	R70-28
R70-21	

L200 - KLOMUTRE

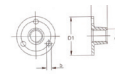
Gjenge	B	C	D	E	F
L203 M 3	15	8,0	5,3	4,2	0,8
L204 M 4	15	8,0	5,3	4,2	0,8
L205 M 5	19	9,0	6,2	6,6	1,0
L206 M 6	19	9,2	7,5	6,6	1,2
L208 M 8	22	11,0	9,5	8,0	1,5
L210 M10	26	13,2	11,5	10,0	1,5

- Innlagsmutre av dyptrukket stål
- Standard ubehandlet, kan leveres el forzinket



LM500 - LIMINNSATS

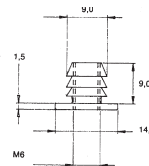
	Gjenge			
LM508	25	10	M8	3
LM510	29	12	M10	3



LM300 - LIMINNSATS

Gjenge	
LM306 M 6	
LM308 M 8	

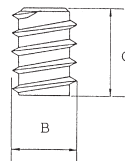
- Materiale stål, messing på forespørsel



LR400 - GJENGE MUFFE

Gjenge	B	C
LR406 M 6	10	15
LR408 M 8	14	14
LR410 M10	14	20

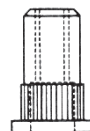
- Materiale ubehandlet
- Sliss for skrutrekker



BMSR - BLINDNAGLEMUTTER

	A	B	klemomr.
BMSR M 4	6	10	0,3-3,0
BMSR M 5	7	12	3,1-4,0
BMSR M 6	9	14	0,5-3,0
BMSR M 8	11	16	0,5-3,0
BMSR M10	12	17	0,5-3,0

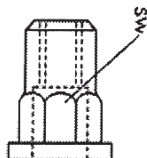
- Materiale stål rund m/riller [alu+rustfritt på forespørsel]
- Standard flatt hode, leveres også m/90° senkhode



BMSH - BLINDNAGLEMUTTER



- Materiale stål, sekskant [alu+rustfritt på forespørsel]
- Standard flatt hode, leveres også m/90° senkhode



	A	B	klemomr.	SW
BMSH M 4	6	12	0,5-3,0	6 mm
BMSH M 5	7	14	0,5-3,0	7 mm
BMSH M 6	9	16	0,5-3,0	9 mm
BMSH M 8	11	18	0,5-3,0	11 mm
BMSH M10	13	22	1,0-4,0	13 mm

LKF - AVDEKNINGSROSETTER



- Materiale PE
- Standard farve hvit, elfenben, lysegrå, sort, eik [parkettfarve]

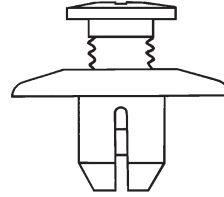


	D	dmm	d"	H
LKF 37,8	8,5			6
LKF 38,7	10,5	1/8"		6
LKF 41	12,5			6
LKF 47,5	14,5	1/4"		7
LKF 45	15,5			6
LKF 50	16,5			7
LKF 50	17,5	3/8"		7
LKF 50	18,5			7
LKF 54	20,5			7
LKF 55	21,5	1/2"		7
LKF 56		22,5		7
LKF 61		24,5		7
LKF 61		25,5		7
LKF 63		27,5	3/4"	7
LKF 62		28,5		7
LKF 61		30,5		8,5
LKF 70		34,5	1"	7
LKF 76,5		42,5	1 1/4"	7
LKF 88		48,5	1 1/2"	7
LKF 99,5		60,5	2"	7

SBN - SKRUE/BLINDNAGLE

	A	B	C	D	
SBN 4,5-4,8	8,4-9,9	0,0	9,7	1,5	18,3
SBN 5,8-6,1	3,0-5,0	2,5	11,0	1,5	17,5
SBN 6,3-6,8	2,5-8,0	0,8	17,8	2,8	22,8
SBN 6,3-6,8	2,5-8,5	0,8	15,5	3,0	22,8
SBN 8,0-8,5	3,5-8,5	0,8	15,0	3,0	20,0

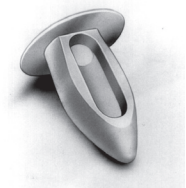
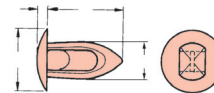
- Demonterbar med skrutrekker
- Materiale POM
- Standardfarge sort



SPK - SPISSNAGLE

	A	B	C	D	
SPK 4,6-4,9	1,6-3,2	10,7	1,5	9,4	5,7
SPK 3,3-3,4	1,6-3,2	9,9	1,5	7,1	4,1
SPK 3,8-4,1	1,6-3,7	10,2	1,5	7,1	4,6
SPK 5,4-5,6	3,2-4,7	13,7	1,5	9,4	6,3
SPK 5,4-5,6	1,6-3,2	11,4	1,5	9,4	5,7
SPK 6,4-6,6	3,2-4,7	14,6	1,5	12,3	7,4
SPK 4,6-4,9	4,2-4,7	13,2	1,5	9,4	5,2
SPK 3,3-3,4	3,2-3,6	8,1	1,5	7,1	4,1
SPK 3,7	7,4-7,6	13,5	1,5	7,1	5,0
SPK 3,0-3,1	1,6-3,2	9,9	1,5	7,1	3,8
SPK 6,4-6,6	9,1-9,7	20,6	1,7	15,5	6,2
SPK 8,4-8,5	1,6-8,6	22,9	1,8	17,3	9,5

- Enkel montering u/verktøy
- Demonterbar
- Materiale PA6,6
- Standardfarge natur



BLN - BLINDNAGLE

	A	B	C	D
BLN 2,7	1,0-1,8	3,2	1,4	5
BLN 2,7	1,8-2,6	4	1,4	5
BLN 2,7	3,4-4,2	5,6	1,4	5
BLN 3,1	1,0-2,0	3,5	1,6	6,4
BLN 3,1	2,0-3,0	4,5	1,6	6,4
BLN 3,1	4,0-5,0	6,5	1,6	6,4
BLN 3,1	5,5-6,5	8	1,6	6,4
BLN 3,6	2,0-3,0	4,5	1,6	6,4
BLN 3,6	2,5-3,5	5	1,6	6,4
BLN 3,6	3,0-4,0	5,5	1,6	6,4
BLN 3,6	4,5-5,5	7	1,6	6,4
BLN 4,1	2,5-3,5	5	1,8	8
BLN 4,1	3,5-4,5	6	1,8	8
BLN 4,1	4,5-5,5	7	1,8	8
BLN 4,1	5,5-6,5	8	1,8	8
BLN 4,1	7,5-8,5	10	1,8	8
BLN 5,1	1,5-2,5	4,5	2,2	9
BLN 5,1	3,5-4,5	6,5	2,2	9
BLN 5,1	4,5-5,5	7,5	2,2	9
BLN 5,1	5,5-6,5	8,5	2,2	9
BLN 5,1	6,5-7,5	9,5	2,2	9
BLN 5,1	7,5-8,5	10,5	2,2	9

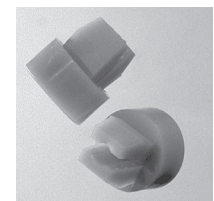
- Enkel montering u/verktøy
- Demonterbar
- Materiale PA6,6
- Standardfarge sort



SPG - SPRENGMUTTER

	A	B	C	
SPG 7,0x7,0	0,8x4,0	13	1,5	8,3

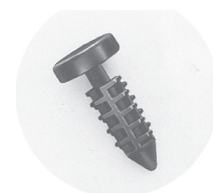
- Materiale POM
- Standardfarge natur



PTC - PINE TREE CLIPS

	A	B	C	D	
PTC 3	4,0-12,0	5,5	2,3	14,5	1,5
PTC 5	1,7-8,0	11,0	3,4	9,2	1,0
PTC 6,4	3,6-10,0	15,9	2,0	14,5	1,5
PTC 7	3,5-20,0	19,0	4,5	22,9	1,5
PTC 7	1,6-25,4	19,0	7,9	25,4	1,5
PTC 5	1,6-6,4	10,0	3,7	8,3	1,0
PTC 10	1,5-20,0	21,5	5,7	22,6	4,0

- Selvsentrerende nagle
- Enkel montering u/verktøy
- Materiale PA6,6
- Standardfarge sort



SBF - TREE LOK STIFT



- Forbindelselement
- Materiale PA6,6
- Standardfarge sort

	A	B	C	D	E
SBF 6,2-6,5	11,1	1,0-9,5	12,7	12,7	1,0
SBF 8,25	7,9	3,5-5,5	9,6	6,5	1,0
SBF 11,0-11,2	11,1	3,0-9,0	12,7	11,2	1,0
SBF 11,0-11,2	11,1	3,0-9,0	12,7	11,2	6,4

SBF - TREE LOK HYLSE



- Forbindelselement
- Materiale PA6,6
- Standardfarge sort

	A	B	C	D	E
SBF 10,3	3,5	16,0	9,5	1,0	8,3
SBF 14,3	11,9	17,8	11,0	1,0	8,3

SBE - KOBLINGSNAGLE



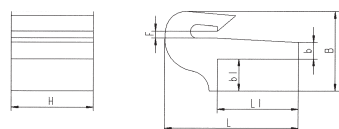
- Består av to like deler pr sett
- Husk å bestille to stk!
- Materiale PA6,6
- Standardfarge natur

	A	B	C	D
SBE 7	5,7-8,7	10,3	2,3	3,6
SBE 7	6,0-7,5	19,0	2,3	8,3
SBE 7	8,7-12,7	10,3	1,6	8,3
SBE 7	8,8-12,7	19,0	2,3	8,3
SBE 7	12,7-20,6	10,3	1,6	6,7
SBE 7	12,7-20,6	19,0	2,3	10,0
SBE 7	19,8-34,9	10,3	1,6	10,0
SBE 7	19,8-35,0	19,0	2,3	6,7

FHA - FJÆRHOLDER M/ANSLAG



- Materiale PP
- Standardfarge hvit

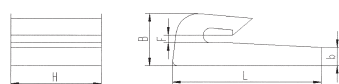


	A	B	C	D	E	F
FHA 20,4	20,4	1,8	32,0	20,1	4,2	8,0

FHO - FJÆRHOLDER



- Materiale PP
- Standardfarge hvit



	A	B	C	D
FHO 11,8	20,0	1,8	33,7	4,0

KONTORSTOLDELER



GREEN: Det første GRØNNE kvalitetshjulet – tilpasset en økologisk fremtid

Med ønske om å beskytte miljøet, og med tanke på fremtiden og nye generasjoner, har vi i A. C. Landgraff fått produsert nye hjul i resirkulert materiale, ECONYL 70. GREEN er et nyskapende produkt.

Hjulene er ideelle for industri- og næringsmiddelindustrien. De tekniske spesifikasjonene og kvalitetene er de samme som for tilsvarende sprøyte-støpte hjul, men materialet ECONYL 70 består av 70 % resirkulert materiale.

Dette gir en energibesparelse på hele 64 % under produksjonen.

GREEN er tilgjengelig i forskjellige varianter av hjul og trinser. (De kan også leveres i andre farger).

GREEN Tilgjengelig i ulike varianter av hjul og trinser.

Laget av
ECONYL 70



Materialet er klart som resirkulert



Sertifisert materiale



70%

Laget av resirkulert materiale



64%

Energibesparelse under produksjon

